

## Excellent Integrated System Limited

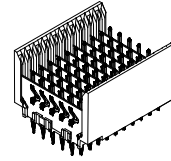
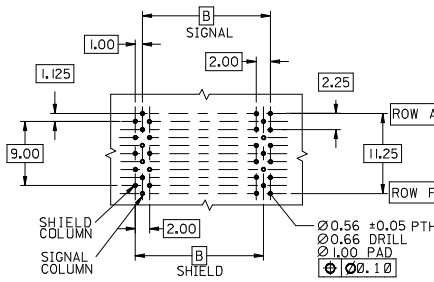
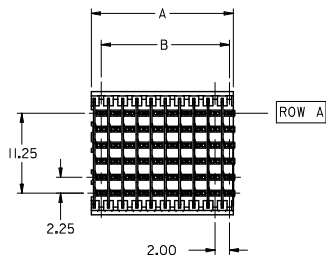
Stocking Distributor

Click to view price, real time Inventory, Delivery & Lifecycle Information:

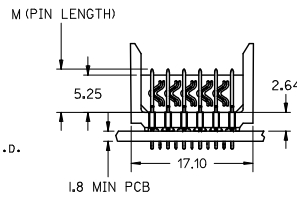
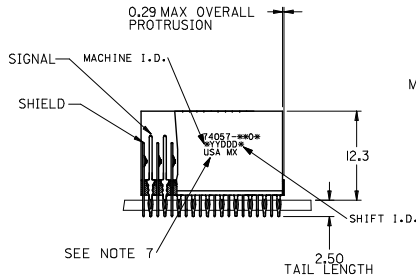
[Molex Connector Corporation](#)  
[0740571007](#)

For any questions, you can email us directly:

[sales@integrated-circuit.com](mailto:sales@integrated-circuit.com)



**BACKPLANE HOLE PATTERN**  
RECOMMENDED DIMENSIONS



**NOTES:**

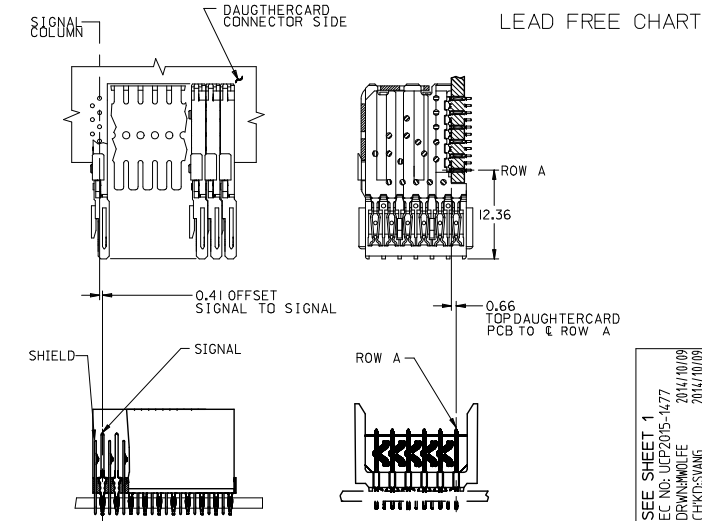
1. MATERIALS:  
HOUSING - LIQUID CRYSTAL POLYMER (LCP),  
GLASS-FILLED, UL 94V-0, COLOR: BLACK  
SIGNAL PIN & SHIELD - COPPER ALLOY
2. FINISHES:  
CONTACT AREA: SELECTIVE GOLD (Au)  
PCB TAILS: SELECTIVE MATTE TIN (Sn)  
NICKEL (Ni) OVERALL.
3. THIS PART CONFORMS TO MOLEX PRODUCT SPECIFICATION PS-74031-999
4. FOR MIXED CONTACT LENGTHS CONSULT MOLEX FOR AVAILABILITY
5. FOR SPECIFIC MATERIAL NUMBERS & MATING INFORMATION REFER TO SHEET 2
6. PACKAGE PER PK-74057-003
7. EITHER MARK PART WITH PART NUMBER & DATE CODE APPROXIMATELY WHERE SHOWN OR PLACE LABEL ON THE TUBE.
8. MAPS (MOLEX ADVANCED PLATING SYSTEM)

REV DIMENSION 011 EC NO: UCP2015-1477 DRAWN BY: DRINKWOLFE 2014/10/09 CHKD BY: CHIKOSWANG 2014/10/09 APPROV BY: APPRSMILLER 2014/10/17	QUALITY SYMBOLS ▽=0 ▽=0 ▽=0	GENERAL TOLERANCES (UNLESS SPECIFIED)		DIMENSION STYLE MM ONLY		SCALE 2.5:1	DESIGN UNITS METRIC	THIRD ANGLE PROJECTION	
		4 PLACES ± --- ± ---	3 PLACES ± --- ± ---	DRAWN BY MWANG	DATE 1998/11/09	TITLE VHDM 6 ROW OPEN END BACKPLANE SALES ASSEMBLY <b>molex</b>			
		2 PLACES ± 0.25 ± ---	1 PLACE ± 0.38 ± ---	CHECKED BY JLAURX	DATE 1998/11/09				
		0 PLACE ± --- ± ---	ANGULAR ± 1/2°	APPROVED BY SMILLER	DATE 2012/05/23				
DRAFT WHERE APPLICABLE MUST REMAIN WITHIN DIMENSIONS		MATERIAL NO. SEE SHEET 2		DOCUMENT NO. SD-74057-002		SHEET NO. 1 OF 2		THIS DRAWING CONTAINS INFORMATION THAT IS PROPRIETARY TO MOLEX INCORPORATED AND SHOULD NOT BE USED WITHOUT WRITTEN PERMISSION	

PART NUMBER	COLUMN	NUMBER OF SIGNAL PIN	NUMBER OF SHIELD	A	B	M	GOLD THICKNESS MICROMETER	TIN THICKNESS MICROMETER
74057-6001	10	60	10	20,00	18,00	4.75	0.25 MAPS	0.76-1.52
74057-9001							0.76	
74057-9006							1.27	
74057-6501	0.25 MAPS							
74057-9501	0.76							
74057-9506	1.27							
74057-7001	25	150	25	50,00	48,00	0.25 MAPS		
74057-8501						0.76		
74057-8506						1.27		
74057-6002	10	60	10	20,00	18,00	0.25 MAPS		
74057-9002						0.76		
74057-9007						1.27		
74057-6502	15	90	15	30,00	28,00	0.25 MAPS		
74057-9502						0.76		
74057-9507						1.27		
74057-7002	25	150	25	50,00	48,00	0.25 MAPS		
74057-8502						0.76		
74057-8507						1.27		
74057-6003	10	60	10	20,00	18,00	0.25 MAPS		
74057-9003						0.76		
74057-9008						1.27		
74057-6503	15	90	15	30,00	28,00	0.25 MAPS		
74057-9503						0.76		
74057-9508						1.27		
74057-7003	25	150	25	50,00	48,00	0.25 MAPS		
74057-8503						0.76		
74057-8508						1.27		
74057-6004	10	60	10	20,00	18,00	0.25 MAPS		
74057-9004						0.76		
74057-9009						1.27		
74057-6504	15	90	15	30,00	28,00	0.25 MAPS		
74057-9504						0.76		
74057-9509						1.27		
74057-7004	25	150	25	50,00	48,00	0.25 MAPS		
74057-8504						0.76		
74057-8509						1.27		

PART NUMBER	COLUMN	NUMBER OF SIGNAL PIN	NUMBER OF SHIELD	A	B	M	GOLD THICKNESS MICROMETER	TIN THICKNESS MICROMETER
74057-1001	10	60	10	20,00	18,00	4.75	0.76	0.76-1.52
74057-1006							1.27	
74057-1501							0.76	
74057-1506	1.27							
74057-2501	0.76							
74057-2506	1.27							
74057-1002	15	90	15	30,00	28,00	0.76		
74057-1502						1.27		
74057-2502						0.76		
74057-1007	25	150	25	50,00	48,00	0.76		
74057-1507						1.27		
74057-2507						0.76		
74057-1003	10	60	10	20,00	18,00	0.76		
74057-1008						1.27		
74057-1503						0.76		
74057-1508	15	90	15	30,00	28,00	0.76		
74057-1509						1.27		
74057-2503						0.76		
74057-2508	25	150	25	50,00	48,00	0.76		
74057-1004						1.27		
74057-1009						0.76		
74057-1504	10	60	10	20,00	18,00	0.76		
74057-1509						1.27		
74057-2504						0.76		
74057-2509	25	150	25	50,00	48,00	0.76		
						1.27		
						0.76		

LEAD FREE  
(FORMERLY TIN/LEAD) CHART



74057 - \* \* 0 \*

NUMBER OF COLUMNS/PLATING      PIN HEIGHT  
 10 = 10 COLUMN MATTE TIN (FORMERLY TIN/LEAD)      1 & 6 = 4.75  
 15 = 15 COLUMN MATTE TIN (FORMERLY TIN/LEAD)      2 & 7 = 6.25  
 25 = 25 COLUMN MATTE TIN (FORMERLY TIN/LEAD)      3 & 8 = 4.25  
 60 = 10 COLUMN MATTE TIN (MAPS)      4 & 9 = 5.15  
 65 = 15 COLUMN MATTE TIN (MAPS)  
 70 = 25 COLUMN MATTE TIN (MAPS)  
 90 = 10 COLUMN MATTE TIN  
 95 = 15 COLUMN MATTE TIN  
 85 = 25 COLUMN MATTE TIN

SEE SHEET 1 EC NO: UCP2015-1477 DRAWN BY: DRW:WOLFE CHK:OSWANG APPR:SMILLER 2014/10/09 2014/10/09 2014/10/17	QUALITY SYMBOLS ∇=0 ∇=0 ∇=0	GENERAL TOLERANCES (UNLESS SPECIFIED) mm      INCH	DIMENSION STYLE MM ONLY	SCALE 2.5:1	DESIGN UNITS METRIC	THIRD ANGLE PROJECTION	
		4 PLACES ± --- ± --- 3 PLACES ± --- ± --- 2 PLACES ± 0.25 ± --- 1 PLACE ± 0.38 ± --- 0 PLACE ± --- ± ---	DRAWN BY: MWANG      DATE: 1998/11/09 CHECKED BY: JLAURX      DATE: 1998/11/09 APPROVED BY: SMILLER      DATE: 2012/05/23	TITLE VHDM 6 ROW OPEN END BACKPLANE SALES ASSEMBLY		molex SD-74057-002	SHEET NO. 2 OF 2
		ANGULAR ±1/2° DRAFT WHERE APPLICABLE MUST REMAIN WITHIN DIMENSIONS	MATERIAL NO. SEE TABLE	DOCUMENT NO. SD-74057-002			
		THIS DRAWING CONTAINS INFORMATION THAT IS PROPRIETARY TO MOLEX INCORPORATED AND SHOULD NOT BE USED WITHOUT WRITTEN PERMISSION					