

## Excellent Integrated System Limited

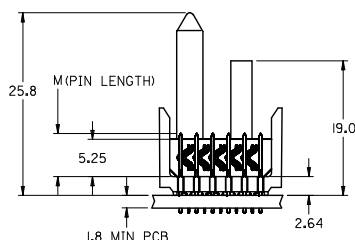
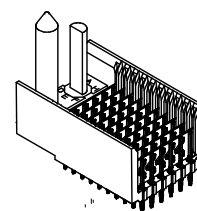
Stocking Distributor

Click to view price, real time Inventory, Delivery & Lifecycle Information:





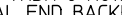
[Molex Connector Corporation](#)  
[0740589034](#)

For any questions, you can email us directly:

[sales@integrated-circuit.com](mailto:sales@integrated-circuit.com)



1. MATERIALS:
  - HOUSING - LIQUID CRYSTAL POLYMER (LCP),  
GLASS-FILLED, UL 94V-0, COLOR: BLACK
  - SIGNAL PIN & SHIELD - COPPER ALLOY
2. FINISHES:
  - CONTACT AREA: SELECTIVE GOLD (Au)
  - PCB TAILS: SELECTIVE MATTE TIN (Sn)
  - NICKEL (Ni) OVERALL.
3. THIS PART CONFORMS TO MOLEX PRODUCT  
SPECIFICATION PS-74031-999
4. FOR MIXED CONTACT LENGTHS CONSULT  
MOLEX FOR AVAILABILITY
5. FOR SPECIFIC MATERIAL NUMBERS & MATING  
INFORMATION REFER TO SHEET 2
6. PACKAGE PER PK-74058-003
7. MARK PART WITH PART NUMBER & DATE  
CODE APPROXIMATELY WHERE SHOWN
8. MAPS (MOLEX ADVANCED PLATING SYSTEM).

LEAD FREE CONVERSION EC NO: UCP2013-0087 DRWINGS 2012/08/21 CHKD:MOLLE 2012/11/26 APPR:SMILLER 2012/12/14	QUALITY SYMBOLS   	GENERAL TOLERANCES (UNLESS SPECIFIED)		DIMENSION STYLE MM ONLY		SCALE 2.5:1	DESIGN UNITS METRIC	 THIRD ANGLE PROJECTION
		mm	INCH	DRAWN BY JMELTON	DATE 2010/05/19	TITLE VHDM 6 ROW SIGNAL END BACKPLANE SALES ASSEMBLY 		
		4 PLACES ± --- ± ---	3 PLACES ± --- ± ---	CHECKED BY SMANNELLEY	DATE 2010/05/19			
		3 PLACES ± --- ± ---	2 PLACES ± --- ± ---	APPROVED BY SMILLER	DATE 2010/07/14			
		1 PLACE ± --- ± ---	0 PLACE ± --- ± ---	MATERIAL NO. SEE SHEET 2			DOCUMENT NO. SD-74058-002	SHEET NO. 1 OF 2
ANGULAR ±1/2°		DRAFT WHERE APPLICABLE MUST REMAIN WITH DIMENSIONS		THIS DRAWING CONTAINS INFORMATION THAT IS PROPRIETARY TO MOLEX UNLESS OTHERWISE NOTED. IT IS NOT TO BE REPRODUCED OR TRANSMITTED IN ANY FORM OR BY ANY MEANS, ELECTRONIC OR MECHANICAL, WITHOUT PERMISSION IN WRITING FROM MOLEX.				

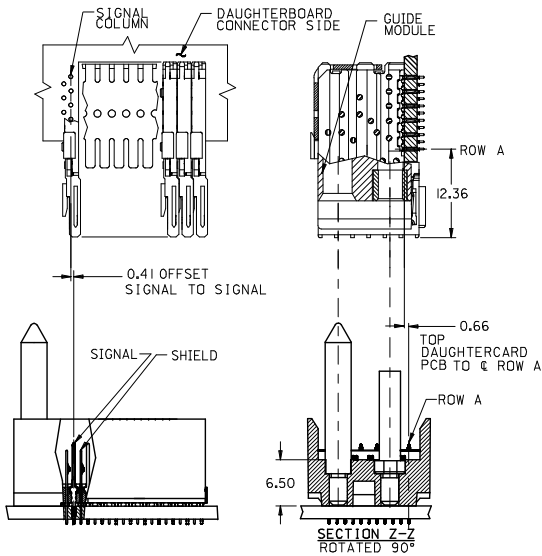
M/N 74058-( )	---0*	---1*	---2*	---3*	---4*	---5*	---6*	---7*	---8*
KEYING PIN ORIENTATION									


74058 \* \* \* \*

CONTACT LOAD  
(PIN LENGTH)  
1.50 = 1.50  
2.00 = 2.00  
2.50 = 2.50  
3.00 = 3.00  
3.50 = 3.50

NUMBER OF COLUMNS/PLATING  
10 = 10 COLUMN MATTE TIN (FORMERLY TIN/LEAD)  
25 = 25 COLUMN MATTE TIN (FORMERLY TIN/LEAD)  
60 = 10 COLUMN MATTE TIN (MAPS)  
75 = 25 COLUMN MATTE TIN (MAPS)  
90 = 10 COLUMN MATTE TIN  
85 = 25 COLUMN MATTE TIN

PART NUMBER	COLUMN	NUMBER OF SIGNAL PIN	NUMBER OF SHIELD	A	B	M	GOLD THICKNESS MICROMETER	TIN THICKNESS MICROMETER
74058-60*1	10	60	10	27.00	18.00	4.75	0.25 MAPS	0.76-152
74058-x0*1							0.76	
74058-x0*6							1.27	
74058-75*1	25	150	25	57.00	48.00	6.25	0.25 MAPS	
74058-x5*1							0.76	
74058-x5*6							1.27	
74058-60*2	10	60	10	27.00	18.00	4.25	0.25 MAPS	
74058-x0*2							0.76	
74058-x0*7							1.27	
74058-75*2	25	150	25	57.00	48.00	5.15	0.25 MAPS	
74058-x5*2							0.76	
74058-x5*7							1.27	
74058-60*3	10	60	10	27.00	18.00	4.25	0.25 MAPS	
74058-x0*3							0.76	
74058-x0*8							1.27	
74058-75*3	25	150	25	57.00	48.00	5.15	0.25 MAPS	
74058-x5*3							0.76	
74058-x5*8							1.27	
74058-60*4	10	60	10	27.00	18.00	4.25	0.25 MAPS	
74058-x0*4							0.76	
74058-x0*9							1.27	
74058-75*4	25	150	25	57.00	48.00	5.15	0.25 MAPS	
74058-x5*4							0.76	
74058-x5*9							1.27	



SEE SHEET 1 EC NO: UCP2013-0687 2012/08/21 DRAWN BY CHKD/MOLFE 2012/11/26 APPR/SMILLER 2012/12/14	QUALITY SYMBOLS  ▽=0 ▽=0 ▽=0	GENERAL TOLERANCES (UNLESS SPECIFIED)	DIMENSION STYLE		SCALE	DESIGN UNITS	 THIRD ANGLE PROJECTION	
			MM ONLY		2.5:1	METRIC		
					TITLE			
					VHDM 6 ROW SIGNAL END BACKPLANE SALES ASSEMBLY			
					<b>molex</b>			
	ANGULAR ±1/2°		MATERIAL NO.	DOCUMENT NO.		SHEET NO.		
	DRAFT WHERE APPLICABLE MUST REMAIN WITHIN DIMENSIONS		SEE TABLE		SD-74058-002		2 OF 2	
	REV	DESCRIPTION	SIZE		THIS DRAWING CONTAINS INFORMATION THAT IS PROPRIETARY TO MOLEX INCORPORATED AND SHOULD NOT BE USED WITHOUT WRITTEN PERMISSION			