

## Excellent Integrated System Limited

Stocking Distributor

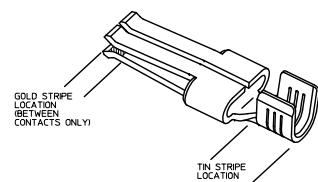
Click to view price, real time Inventory, Delivery & Lifecycle Information:

[Molex Connector Corporation](#)  
[0442624502](#)

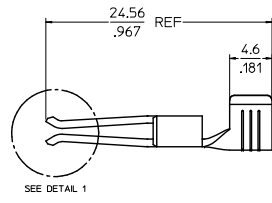
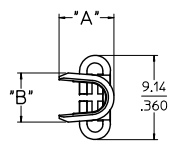
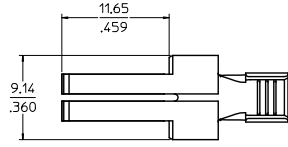
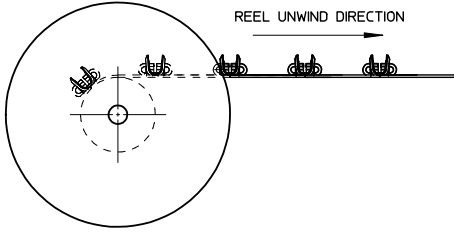
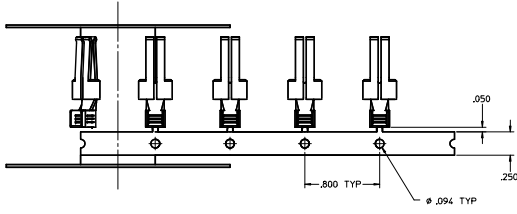
For any questions, you can email us directly:

[sales@integrated-circuit.com](mailto:sales@integrated-circuit.com)

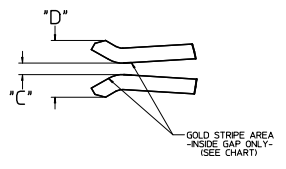
20	19	18	17	16	15	14	13	12	11	10	9	8	7	6	5	4	3	2	1	
PART NUMBER	PLATING	RECOMMENDED WIRE SIZE	DIM 'A' HEIGHT	DIM 'B' WIDTH	DIM 'C' GAP	DIM 'D' TIPS	RECOMMENDED CRIMP APPLICATOR	MATING CONTACT	PACKAGE SIZE	NOTES: 1. MATERIAL: COPPER ALLOY .032 IN THICK 2. FINISH: PER MOLEX PLATING SPECIFICATION ES-88 - SEE CHART 3. FOR CRIMP APPLICATOR SEE CHART 4. FOR CRIMP TOOLING CONTACT MOLEX OR VISIT THE MOLEX WEBSITE AT: WWW.MOLEX.COM 5. STANDARD PACKAGE SIZE: SEE CHART 6. SEE PRODUCT SPECIFICATION: PS-44262-001 FOR MORE INFORMATION 7. PARTS ARE RoHS COMPLIANT 8. FOR MATING CONTACT: SEE CHART 9. FOR CRIMP SET UP INFORMATION SEE MOLEX APPLICATION SPECIFICATION DOCUMENT: 8 AWG - ATS-638326300 10/12 AWG - ATS-638326600 14/16 AWG - ATS-638326900										
44262-4334	30μ" GOLD STRIPE OVER 50μ" NICKEL OVERALL WITH 80-130μ" SELECT TIN	8 AWG (2) 12 AWG	7.42±0.5 292±0.20	5.84±0.5 230±0.20			63832-6300		1800 PARTS/ REEL	44262-6*** SEE MOLEX DRAWING SD-44262-026 OR WITH BLADES 0.64/0.025 THICK X 6.10/240 MN WIDE										
44262-4332	30μ" GOLD STRIPE OVER 50μ" NICKEL OVERALL WITH 80-130μ" SELECT TIN	10-12 AWG (2) 14 AWG	5.97±0.5 235±0.20	5.33±0.5 210±0.20	0.10/.004	254/100 REF	63832-6000		2500 PARTS/ REEL											
44262-4336	30μ" GOLD STRIPE OVER 50μ" NICKEL OVERALL WITH 80-130μ" SELECT TIN	14-16 AWG (2) 16 AWG (2) 18 AWG	5.20±0.5 205±0.20	5.33±0.5 210±0.20			63832-6100		2500 PARTS/ REEL											
44262-4434	30μ" GOLD STRIPE OVER 50μ" NICKEL OVERALL WITH 80-130μ" SELECT TIN	8 AWG (2) 12 AWG	7.42±0.5 292±0.20	5.84±0.5 230±0.20			63832-6300		1800 PARTS/ REEL	FOR USE WITH BLADES 1.27/0.050 THICK X 6.10/240 MN WIDE										
44262-4432	30μ" GOLD STRIPE OVER 50μ" NICKEL OVERALL WITH 80-130μ" SELECT TIN	10-12 AWG (2) 14 AWG	5.97±0.5 235±0.20	5.33±0.5 210±0.20	0.64/.025	3.07/1.121 REF	63832-6000		2500 PARTS/ REEL											
44262-4436	30μ" GOLD STRIPE OVER 50μ" NICKEL OVERALL WITH 80-130μ" SELECT TIN	14-16 AWG (2) 16 AWG (2) 18 AWG	5.20±0.5 205±0.20	5.33±0.5 210±0.20			63832-6100		2500 PARTS/ REEL											
44262-4534	30μ" GOLD STRIPE OVER 50μ" NICKEL OVERALL WITH 80-130μ" SELECT TIN	8 AWG (2) 12 AWG	7.42±0.5 292±0.20	5.84±0.5 230±0.20			63832-6300		1800 PARTS/ REEL	FOR USE WITH BLADES 0.81/0.032 THICK X 6.10/240 MN WIDE RECOMMENDED FOR 6 CIRCUITS AND ABOVE										
44262-4532	30μ" GOLD STRIPE OVER 50μ" NICKEL OVERALL WITH 80-130μ" SELECT TIN	10-12 AWG (2) 14 AWG	5.97±0.5 235±0.20	5.33±0.5 210±0.20	0.30/.012	2.74/1.108 REF	63832-6000		2500 PARTS/ REEL											
44262-4536	30μ" GOLD STRIPE OVER 50μ" NICKEL OVERALL WITH 80-130μ" SELECT TIN	14-16 AWG (2) 16 AWG (2) 18 AWG	5.20±0.5 205±0.20	5.33±0.5 210±0.20			63832-6100		2500 PARTS/ REEL											
44262-4634	30μ" GOLD STRIPE OVER 50μ" NICKEL OVERALL WITH 80-130μ" SELECT TIN	8 AWG (2) 12 AWG	7.42±0.5 292±0.20	5.84±0.5 230±0.20			63832-6300		1800 PARTS/ REEL	FOR USE WITH BLADES 1.27/0.050 THICK X 6.10/240 MN WIDE RECOMMENDED FOR 6 CIRCUITS AND ABOVE										
44262-4632	30μ" GOLD STRIPE OVER 50μ" NICKEL OVERALL WITH 80-130μ" SELECT TIN	10-12 AWG (2) 14 AWG	5.97±0.5 235±0.20	5.33±0.5 210±0.20	0.89/.035	3.33/1.131 REF	63832-6000		2500 PARTS/ REEL											
44262-4636	30μ" GOLD STRIPE OVER 50μ" NICKEL OVERALL WITH 80-130μ" SELECT TIN	14-16 AWG (2) 16 AWG (2) 18 AWG	5.20±0.5 205±0.20	5.33±0.5 210±0.20			63832-6100		2500 PARTS/ REEL											



REVISIONS		QUALITY SYMBOLS		GENERAL TOLERANCES (UNLESS SPECIFIED)		DIMENSION STYLE		SCALE		DESIGN UNITS		THIRD ANGLE PROJECTION	
REV	DESCRIPTION	mm	INCH	mm	INCH	MM/IN	mm	INCH	mm	INCH	mm	INCH	mm
1	ISSUE THIS DRAWING PARTS CHART	0.25	0.010	0.25	0.010	MM/IN	1:1	INCH	1:1	INCH	1:1	INCH	1:1
2	REVISED TO MEET CUSTOMER REQUIREMENTS	0.25	0.010	0.25	0.010	MM/IN	1:1	INCH	1:1	INCH	1:1	INCH	1:1
3	REVISED TO MEET CUSTOMER REQUIREMENTS	0.25	0.010	0.25	0.010	MM/IN	1:1	INCH	1:1	INCH	1:1	INCH	1:1
4	REVISED TO MEET CUSTOMER REQUIREMENTS	0.25	0.010	0.25	0.010	MM/IN	1:1	INCH	1:1	INCH	1:1	INCH	1:1
5	REVISED TO MEET CUSTOMER REQUIREMENTS	0.25	0.010	0.25	0.010	MM/IN	1:1	INCH	1:1	INCH	1:1	INCH	1:1
6	REVISED TO MEET CUSTOMER REQUIREMENTS	0.25	0.010	0.25	0.010	MM/IN	1:1	INCH	1:1	INCH	1:1	INCH	1:1
7	REVISED TO MEET CUSTOMER REQUIREMENTS	0.25	0.010	0.25	0.010	MM/IN	1:1	INCH	1:1	INCH	1:1	INCH	1:1
8	REVISED TO MEET CUSTOMER REQUIREMENTS	0.25	0.010	0.25	0.010	MM/IN	1:1	INCH	1:1	INCH	1:1	INCH	1:1
9	REVISED TO MEET CUSTOMER REQUIREMENTS	0.25	0.010	0.25	0.010	MM/IN	1:1	INCH	1:1	INCH	1:1	INCH	1:1
10	REVISED TO MEET CUSTOMER REQUIREMENTS	0.25	0.010	0.25	0.010	MM/IN	1:1	INCH	1:1	INCH	1:1	INCH	1:1
11	REVISED TO MEET CUSTOMER REQUIREMENTS	0.25	0.010	0.25	0.010	MM/IN	1:1	INCH	1:1	INCH	1:1	INCH	1:1
12	REVISED TO MEET CUSTOMER REQUIREMENTS	0.25	0.010	0.25	0.010	MM/IN	1:1	INCH	1:1	INCH	1:1	INCH	1:1
13	REVISED TO MEET CUSTOMER REQUIREMENTS	0.25	0.010	0.25	0.010	MM/IN	1:1	INCH	1:1	INCH	1:1	INCH	1:1
14	REVISED TO MEET CUSTOMER REQUIREMENTS	0.25	0.010	0.25	0.010	MM/IN	1:1	INCH	1:1	INCH	1:1	INCH	1:1
15	REVISED TO MEET CUSTOMER REQUIREMENTS	0.25	0.010	0.25	0.010	MM/IN	1:1	INCH	1:1	INCH	1:1	INCH	1:1
16	REVISED TO MEET CUSTOMER REQUIREMENTS	0.25	0.010	0.25	0.010	MM/IN	1:1	INCH	1:1	INCH	1:1	INCH	1:1
17	REVISED TO MEET CUSTOMER REQUIREMENTS	0.25	0.010	0.25	0.010	MM/IN	1:1	INCH	1:1	INCH	1:1	INCH	1:1
18	REVISED TO MEET CUSTOMER REQUIREMENTS	0.25	0.010	0.25	0.010	MM/IN	1:1	INCH	1:1	INCH	1:1	INCH	1:1
19	REVISED TO MEET CUSTOMER REQUIREMENTS	0.25	0.010	0.25	0.010	MM/IN	1:1	INCH	1:1	INCH	1:1	INCH	1:1
20	REVISED TO MEET CUSTOMER REQUIREMENTS	0.25	0.010	0.25	0.010	MM/IN	1:1	INCH	1:1	INCH	1:1	INCH	1:1



SEE DETAIL 1



DETAIL 1  
SCALE 10:1

SEE SHEET 1 EC NO. 0442624502 DRAWN: SCUMER 2005/07/22 CHKD: [blank] APPR: [blank] DATE: 2005/11/29 REV: [blank]	QUALITY SYMBOLS	GENERAL TOLERANCES (UNLESS SPECIFIED)	DRAGON STYLE	SCALE	DESIGN UNITS	THIRD ANGLE PROJECTION	
	∇=0	4 PLACES ±.0005	MM/IN	5:1	INCH		
	∇=0	3 PLACES ±.001					
	∇=0	2 PLACES ±0.25					
		1 PLACE ±0.25					
		ANGULAR ±1/2°					
		DRAFT WHERE APPLICABLE MUST REMAIN WITHIN DIMENSIONS					
			MATERIAL NO.	DOCUMENT NO.		SHEET NO.	
			SEE CHART	SD-44262-100		2 OF 2	
			SIZE D				
			THIS DRAWING CONTAINS INFORMATION THAT IS PROPRIETARY TO MOLEX INCORPORATED AND SHOULD NOT BE USED WITHOUT WRITTEN PERMISSION				