

Excellent Integrated System Limited

Stocking Distributor

Click to view price, real time Inventory, Delivery & Lifecycle Information:

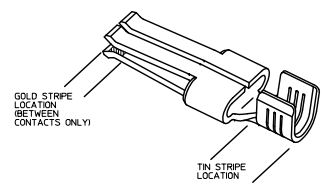
[Molex Connector Corporation](#)
[0442624602](#)

For any questions, you can email us directly:

sales@integrated-circuit.com

PART NUMBER	PLATING	RECOMMENDED WIRE SIZE	DIM 'A' HEIGHT	DIM 'B' WIDTH	DIM 'C' GAP	DIM 'D' TIPS	RECOMMENDED CRIMP APPLICATOR	MATING CONTACT	PACKAGE SIZE
44262-4334	30μ" GOLD STRIPE OVER 50μ" NICKEL OVERALL WITH 80-130μ" SELECT TIN	8 AWG (2) 12 AWG	7.42±0.5 2.92±0.20	5.84±0.5 2.30±0.20			63832-6300	44262-6*** SEE MOLEX DRAWING SD-44262-026 OR WITH BLADES 0.64/0.025 THICK X 6.10/2.40 MM WIDE	1800 PARTS/ REEL
44262-4332	30μ" GOLD STRIPE OVER 50μ" NICKEL OVERALL WITH 80-130μ" SELECT TIN	10-12 AWG (2) 14 AWG	5.97±0.5 2.35±0.20	5.33±0.5 2.10±0.20	0.10/.004	254/100 REF	63832-6000		2500 PARTS/ REEL
44262-4336	30μ" GOLD STRIPE OVER 50μ" NICKEL OVERALL WITH 80-130μ" SELECT TIN	14-16 AWG (2) 16 AWG (2) 18 AWG	5.20±0.5 2.05±0.20	5.33±0.5 2.10±0.20			63832-6100		
44262-4434	30μ" GOLD STRIPE OVER 50μ" NICKEL OVERALL WITH 80-130μ" SELECT TIN	8 AWG (2) 12 AWG	7.42±0.5 2.92±0.20	5.84±0.5 2.30±0.20			63832-6300	FOR USE WITH BLADES 1.27/0.50 THICK X 6.10/2.40 MM WIDE	1800 PARTS/ REEL
44262-4432	30μ" GOLD STRIPE OVER 50μ" NICKEL OVERALL WITH 80-130μ" SELECT TIN	10-12 AWG (2) 14 AWG	5.97±0.5 2.35±0.20	5.33±0.5 2.10±0.20	0.64/.025	307/121 REF	63832-6000		2500 PARTS/ REEL
44262-4436	30μ" GOLD STRIPE OVER 50μ" NICKEL OVERALL WITH 80-130μ" SELECT TIN	14-16 AWG (2) 16 AWG (2) 18 AWG	5.20±0.5 2.05±0.20	5.33±0.5 2.10±0.20			63832-6100		
44262-4534	30μ" GOLD STRIPE OVER 50μ" NICKEL OVERALL WITH 80-130μ" SELECT TIN	8 AWG (2) 12 AWG	7.42±0.5 2.92±0.20	5.84±0.5 2.30±0.20			63832-6300	FOR USE WITH BLADES 0.81/0.32 THICK X 6.10/2.40 MM WIDE RECOMMENDED FOR 6 CIRCUITS AND ABOVE	1800 PARTS/ REEL
44262-4532	30μ" GOLD STRIPE OVER 50μ" NICKEL OVERALL WITH 80-130μ" SELECT TIN	10-12 AWG (2) 14 AWG	5.97±0.5 2.35±0.20	5.33±0.5 2.10±0.20	0.30/.012	274/108 REF	63832-6000		2500 PARTS/ REEL
44262-4536	30μ" GOLD STRIPE OVER 50μ" NICKEL OVERALL WITH 80-130μ" SELECT TIN	14-16 AWG (2) 16 AWG (2) 18 AWG	5.20±0.5 2.05±0.20	5.33±0.5 2.10±0.20			63832-6100		
44262-4634	30μ" GOLD STRIPE OVER 50μ" NICKEL OVERALL WITH 80-130μ" SELECT TIN	8 AWG (2) 12 AWG	7.42±0.5 2.92±0.20	5.84±0.5 2.30±0.20			63832-6300	FOR USE WITH BLADES 1.27/0.50 THICK X 6.10/2.40 MM WIDE RECOMMENDED FOR 6 CIRCUITS AND ABOVE	1800 PARTS/ REEL
44262-4632	30μ" GOLD STRIPE OVER 50μ" NICKEL OVERALL WITH 80-130μ" SELECT TIN	10-12 AWG (2) 14 AWG	5.97±0.5 2.35±0.20	5.33±0.5 2.10±0.20	0.89/.035	333/131 REF	63832-6000		2500 PARTS/ REEL
44262-4636	30μ" GOLD STRIPE OVER 50μ" NICKEL OVERALL WITH 80-130μ" SELECT TIN	14-16 AWG (2) 16 AWG (2) 18 AWG	5.20±0.5 2.05±0.20	5.33±0.5 2.10±0.20			63832-6100		

- NOTES:
1. MATERIAL: COPPER ALLOY .032 IN THICK
 2. FINISH: PER MOLEX PLATING SPECIFICATION ES-88 - SEE CHART
 3. FOR CRIMP APPLICATOR SEE CHART
 4. FOR CRIMP TOOLING CONTACT MOLEX OR VISIT THE MOLEX WEBSITE AT: WWW.MOLEX.COM
 5. STANDARD PACKAGE SIZE: SEE CHART
 6. SEE PRODUCT SPECIFICATION: PS-44262-001 FOR MORE INFORMATION
 7. PARTS ARE RoHS COMPLIANT
 8. FOR MATING CONTACT: SEE CHART
 9. FOR CRIMP SET UP INFORMATION SEE MOLEX APPLICATION SPECIFICATION DOCUMENT:
 - 8 AWG - ATS-638326300
 - 10/12 AWG - ATS-638326000
 - 14/16 AWG - ATS-638326100



REMOVE THESE PARTS FROM CHART

REC. NO. UEP2016-1882
DRAWN BY SCHAFER 2015/07/22
CHECKED []
APPROVED []
DATE 2015/11/20

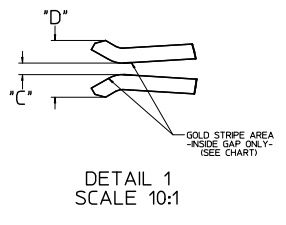
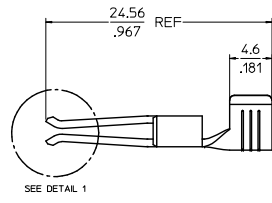
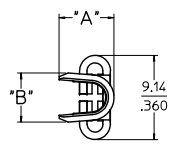
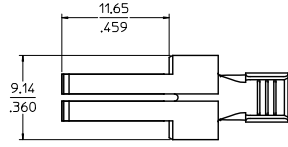
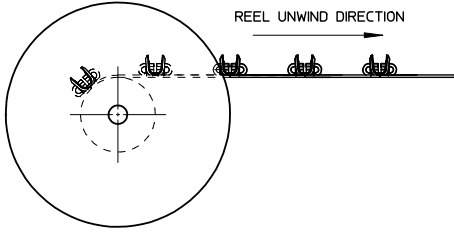
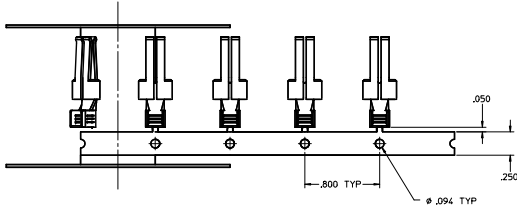
QUALITY SYMBOLS	GENERAL TOLERANCES (UNLESS SPECIFIED)		DIMENSION STYLE		SCALE	DESIGN UNITS	THIRD ANGLE PROJECTION
	mm	INCH	MM/IN	MM/IN			
▽=0	4 PLACES ±---	±---	DRAWN BY BKOSTIC	DATE 2006/11/13	1:1	INCH	TERMINAL - RECEPTACLE POWER CONTACT
▽=0	3 PLACES ±---	±.010	CHECKED BY BKOSTIC	DATE 2006/11/13			
▽=0	2 PLACES ±0.25	±.010	APPROVED BY APATEL	DATE 2006/11/14			
▽=0	1 PLACE ±0.25	±---	ANGULAR ±1/2°				

DRAFT WHERE APPLICABLE MUST REMAIN WITHIN DIMENSIONS

SEE CHART

MATERIAL NO. []
DOCUMENT NO. SD-44262-100
SHEET NO. 1 OF 2

THIS DRAWING CONTAINS INFORMATION THAT IS PROPRIETARY TO MOLEX INCORPORATED AND SHOULD NOT BE USED WITHOUT WRITTEN PERMISSION



SEE SHEET 1 DEC. NO. 167206-8882 DRAWN: SCUMER 2005/07/22 CHKD: APPR: B. J. COOPER 2005/11/29 REV:	QUALITY SYMBOLS	GENERAL TOLERANCES (UNLESS SPECIFIED)	DRAGON STYLE	SCALE	DESIGN UNITS	THIRD ANGLE PROJECTION
	∇=0	mm INCH	MM/IN	5:1	INCH	
	∇=0	4 PLACES ± --- ± ---	DRAWN BY BKOSTIC	DATE 2006/11/13	TITLE	TERMINAL - RECEPTACLE POWER CONTACT
	∇=0	3 PLACES ± --- ± .010	CHECKED BY BKOSTIC	DATE 2006/11/13	MATERIAL NO.	SEE CHART
	2 PLACES ± 0.25 ± .010	APPROVED BY APATEL	DATE 2006/11/14	DOCUMENT NO.	SD-44262-100	SHEET NO. 2 OF 2
	1 PLACE ± 0.25 ± ---	DRAFT WHERE APPLICABLE MUST REMAIN WITHIN DIMENSIONS				
	ANGULAR ± 1/2°	SIZE D THIS DRAWING CONTAINS INFORMATION THAT IS PROPRIETARY TO MOLEX INCORPORATED AND SHOULD NOT BE USED WITHOUT WRITTEN PERMISSION				