

## Excellent Integrated System Limited

Stocking Distributor

Click to view price, real time Inventory, Delivery & Lifecycle Information:

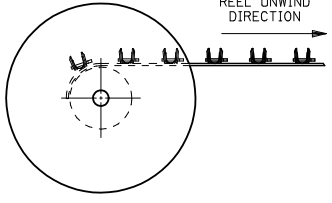
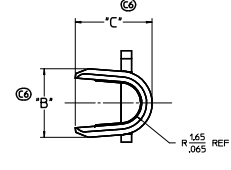
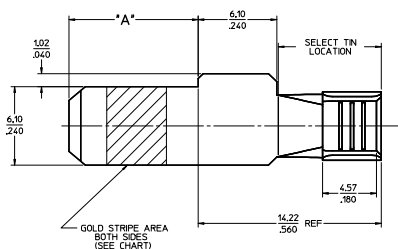
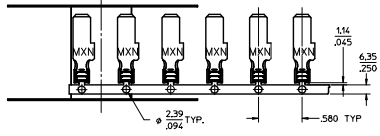
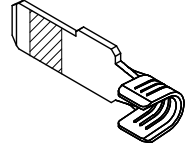
[Molex Connector Corporation](#)  
[0442626312](#)

For any questions, you can email us directly:

[sales@integrated-circuit.com](mailto:sales@integrated-circuit.com)

PART NUMBER	PLATING	RECOMMENDED WIRE SIZE	DIM "A" BLADE LENGTH	DIM "B" WIDTH	DIM "C" HEIGHT	RECOMMENDED CRIMP APPLICATOR	PRODUCT STATUS
44262-6520	30μ INCHES SELECT GOLD STRIPE OVER 50μ INCHES NICKEL OVERALL WITH 80-160μ INCHES SELECT TIN	8 AWG (2) 12 AWG	10.03/.395	N/A	N/A	63832-6300	NOT TOOLED
44262-6521			11.56/.455				
44262-6522			13.08/.515				
44262-6310	80-160μ INCHES TIN OVERALL OVER 50μ INCHES NICKEL OVERALL	10-12 AWG	10.03/.395	5.33+-.025 .210+-.010	5.97+-.050 .235+-.020	63832-6000	TOOLED
44262-6311			11.56/.455				
44262-6312			13.08/.515				
44262-6320	30μ INCHES SELECT GOLD STRIPE OVER 50μ INCHES NICKEL OVERALL WITH 80-160μ INCHES SELECT TIN	(2) 14 AWG	10.03/.395			63832-6000	
44262-6321			11.56/.455				
44262-6322			13.08/.515				
44262-6420	30μ INCHES SELECT GOLD STRIPE OVER 50μ INCHES NICKEL OVERALL WITH 80-160μ INCHES SELECT TIN	14-16 AWG	10.03/.395			63832-6100	
44262-6421			11.56/.455				
44262-6422			13.08/.515				

- NOTES:
1. MATERIAL: COPPER ALLOY .032 IN THICK
  2. FINISH PER MOLEX PLATING SPECIFICATION ES-88 - SEE CHART
  3. SEE CHART FOR CRIMP APPLICATOR NUMBER
  4. FOR CRIMP TOOLING CONTACT MOLEX OR VISIT THE MOLEX WEBSITE AT WWW.MOLEX.COM
  5. STD PACKAGE SIZE: 2,500 PARTS/REEL
  6. SEE PRODUCT SPECIFICATION PS-44262-001 FOR MORE INFORMATION.
  7. PARTS ARE RoHS COMPLIANT
  8. THIS PART MATES WITH RECEPTACLE (FEMALE) POWER CONTACT 44262-43\*\* (SEE SD-44262-100)
  9. FOR CRIMP SET UP INFORMATION SEE MOLEX APPLICATION DOCUMENT:  
8 AWG - ATS-638326300  
10/12 AWG - ATS-638326000  
14/16 AWG - ATS-638326100



QUALITY SYMBOLS	GENERAL TOLERANCES (UNLESS SPECIFIED)	DIMENSION STYLE	SCALE	DESIGN UNITS	THIRD ANGLE PROJECTION
✓-0	4 PLACES ±.010	MM/INCH	5:1	INCH	THIRD ANGLE PROJECTION
✓-0	3 PLACES ±.010				
✓-0	2 PLACES ±.025				
✓-0	1 PLACE ±.025				
	ANGULAR ±1/2°				
	DRAFT WHERE APPLICABLE MUST REMAIN WITHIN DIMENSIONS				

ADD 3 TIN PINS	QUALITY SYMBOLS	GENERAL TOLERANCES (UNLESS SPECIFIED)	DIMENSION STYLE	SCALE	DESIGN UNITS	THIRD ANGLE PROJECTION
ECNO	✓-0	4 PLACES ±.010	MM/INCH	5:1	INCH	THIRD ANGLE PROJECTION
CHKD	✓-0	3 PLACES ±.010				
APPR	✓-0	2 PLACES ±.025				
REV	✓-0	1 PLACE ±.025				
		ANGULAR ±1/2°				
		DRAFT WHERE APPLICABLE MUST REMAIN WITHIN DIMENSIONS				

DATE	2005/07/29	DRAWN BY	DATE	TITLE
BY	CHRISTOPHER SCHUMER	CHKD	2006/11/14	TERMINAL - BLADE POWER TERMINAL
APPR		APPROVED BY	DATE	
		APATEL	2006/11/14	
		MATERIAL NO.	DOCUMENT NO.	
		SEE CHART	SD-44262-026	
		THIS DRAWING CONTAINS INFORMATION THAT IS PROPRIETARY TO MOLEX INCORPORATED AND SHOULD NOT BE USED WITHOUT WRITTEN PERMISSION		