

Excellent Integrated System Limited

Stocking Distributor

Click to view price, real time Inventory, Delivery & Lifecycle Information:

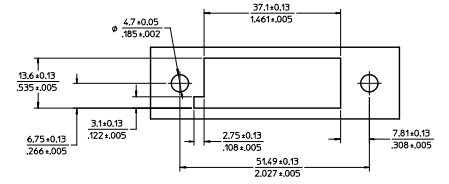
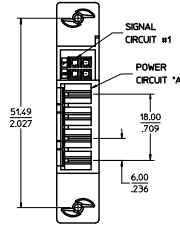
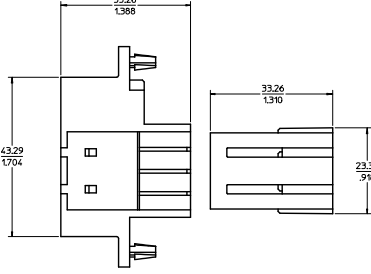
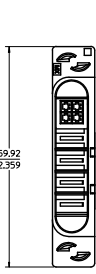
[Molex Connector Corporation](#)
[0464091100](#)

For any questions, you can email us directly:

sales@integrated-circuit.com

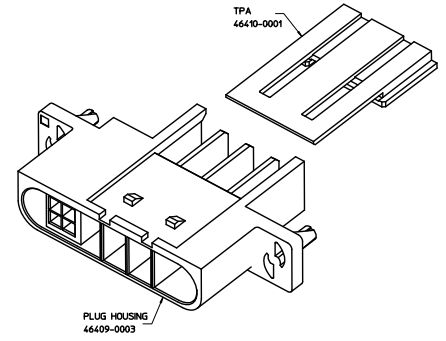
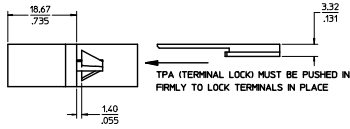
20	19	18	17	16	15	14	13	12	11	10	9	8	7	6	5	4	3	2	1
KIT PART NUMBER		HOUSING No.		TPA No.															
46409-1200		46409-0003		46410-0001															

REPLACING PART NO.
46409-0001



RECOMMENDED MOUNTING BRACKET CUT-OUT

PANEL THICKNESS: 1.22±0.05/0.48±0.002
(SEE NOTE 5)



- NOTES:
1. MATERIAL: PBT OR EQUIVALENT, 94V-0, COLOR: BLACK.
 2. HOUSING ACCEPTS MOLEX TERMINAL NUMBERS: 44262-6321 (POWER) AND 43031-0001 (SIGNAL), NOT SHOWN, SOLD SEPARATELY.
 3. PLUG MATES WITH RECEPTACLE HOUSING 46408-0003.
 4. PLUG REQUIRES INCLUDED POWER TERMINAL LOCK (TPA) 46410-0001, ALSO AVAILABLE SEPARATELY.
 5. CONNECTOR SHOULD ASSEMBLED (PRESSED IN) ON THE PUNCH-SIDE OF THE MOUNTING BRACKET.
 6. HOUSING AND ASSOCIATED COMPONENTS ARE RoHS COMPLIANT.
 7. PACKAGED PER MOLEX PACKAGING SPEC: PK-46408-***.

REV. DOC. NO. RES. TO SD EC NO. LUCP202-952 B DRAWN: JUILLES 2011/10/27 CHKD: APATEL 2011/10/27 APPR: APATEL 2011/10/28	QUALITY SYMBOLS	GENERAL TOLERANCES (UNLESS SPECIFIED)	DIMENSION STYLE	SCALE	DESIGN UNITS	THIRD ANGLE PROJECTION
		mm INCH	MM/IN	1:1	METRIC	
	4 PLACES ±.010	±.010	DRAWN BY	DATE	TITLE	
	3 PLACES ±.025	±.025	SBOGIEL	2008/7/18	PLUG HOUSING AND TPA KIT	
2 PLACES ±.050	±.050	SBOGIEL	2008/7/18	4 CKT POWER AND SIGNAL		
1 PLACE ±.100	±.100	APATEL	2011/10/28	MOLEX INCORPORATED		
ANGULAR ± 2°		APPROVED BY		DOCUMENT NO.		SHEET NO.
DRAFT WHERE APPLICABLE MUST REMAIN WITHIN DIMENSIONS		MATERIAL NO.		SD-46409-1200		1 OF 1
SIZE D		THIS DRAWING CONTAINS INFORMATION THAT IS PROPRIETARY TO MOLEX INCORPORATED AND SHOULD NOT BE USED WITHOUT WRITTEN PERMISSION				