

Excellent Integrated System Limited

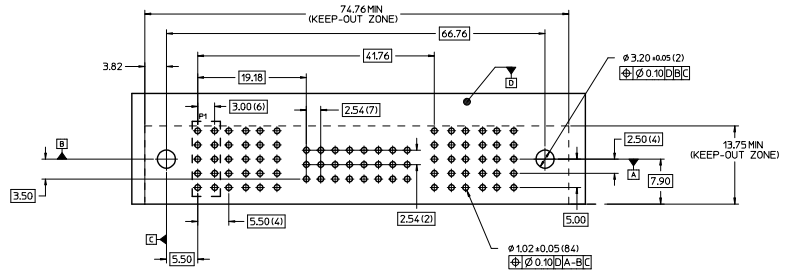
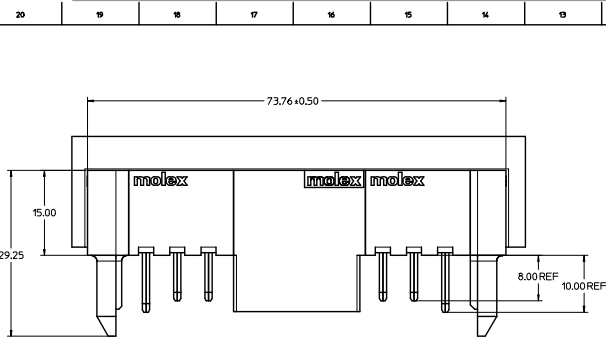
Stocking Distributor

Click to view price, real time Inventory, Delivery & Lifecycle Information:

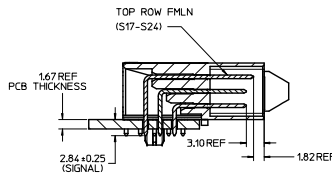
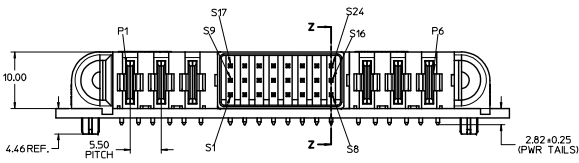
[Molex Connector Corporation](#)
[0464373007](#)

For any questions, you can email us directly:

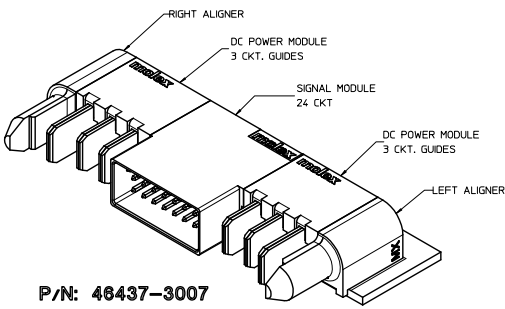
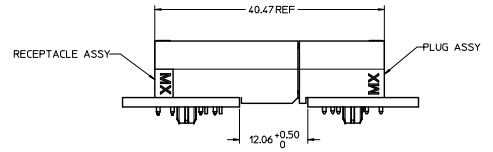
sales@integrated-circuit.com



RECOMMENDED PCB LAY-OUT AND KEEP-OUT ZONE



SECTION Z-Z



P/N: 46437-3007

NOTES:

1. MATERIAL:
-HOUSINGS: LCP UL94, V-0, COLOR: BLACK.
-TERMINALS: COPPER ALLOY.
-PLATING: 0.00127 NICKEL OVERALL WITH 0.00254 SELECTIVE TIN ON SOLDER TAILS AND 0.000762 SELECTIVE GOLD ON CONTACT AREA.
2. ASSEMBLIES PACKED IN TRAYS, SPQ: 180
3. PC BOARD REQUIRES SOLDER THRU HOLES, REFER TO PS-46436-100 FOR DETAILS
4. PRODUCT SPEC: PS-46436-100.
5. APPLICATION SPEC: AS-46436-100.
6. PRODUCT TO MEET RoHS REQUIREMENTS.
7. ASSEMBLY MATES TO MOLEX RECEPTACLE ASSEMBLY P/N 46436-3007 OR 46562-3007.

QUALITY SYMBOLS	GENERAL TOLERANCES (UNLESS SPECIFIED)		DIMENSION STYLE		SCALE	DESIGN UNITS	THIRD ANGLE PROJECTION
	mm	INCH	MM ONLY	DATE	NTS	METRIC	
RELEASED INITIAL DATE DRAWN/DOULES CHECKED/KJH APPROVED/ATL REV	4 PLACES	±---	±---	DRAWN BY KJKOH	DATE 2009/03/11	TITLE RA PLUG ASSY TEN60 POWER G-3P-24S-3P-G	MATERIAL NO. 46437-3007 DOCUMENT NO. SD-46437-307 SHEET NO. 1 OF 1
	3 PLACES	±---	±---	CHECKED BY KJKOH	DATE 2009/03/11	MOLEX INCORPORATED	
	2 PLACES	± 0.25	±---	APPROVED BY SHONG	DATE		
	1 PLACE	± 0.25	±---	DRAFT WHERE APPLICABLE MUST REMAIN WITHIN DIMENSIONS		THIS DRAWING CONTAINS INFORMATION THAT IS PROPRIETARY TO MOLEX INCORPORATED AND SHOULD NOT BE USED WITHOUT WRITTEN PERMISSION	