

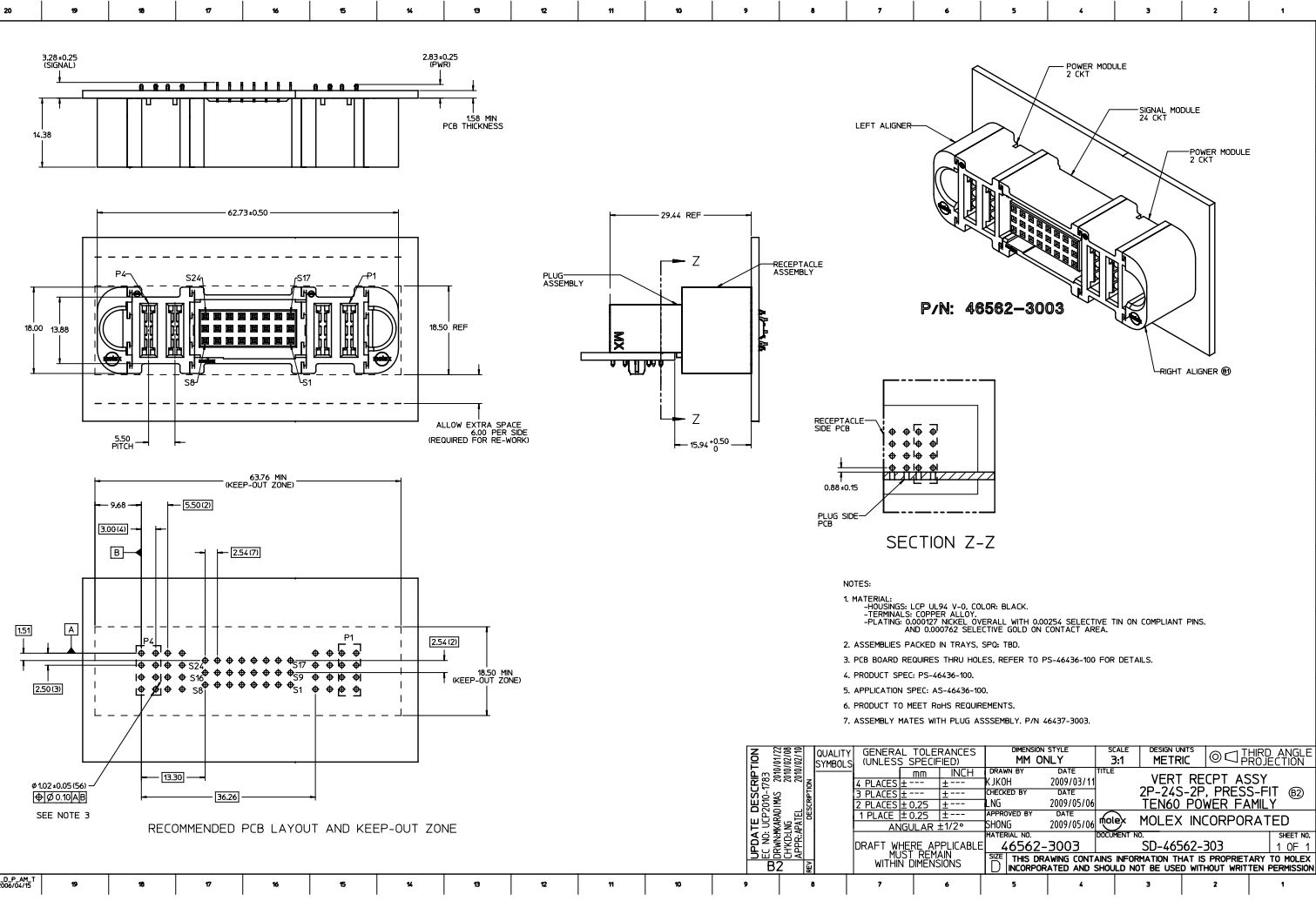
## **Excellent Integrated System Limited**

Stocking Distributor

Click to view price, real time Inventory, Delivery & Lifecycle Information:

[Molex Connector Corporation](#)  
[0465623003](#)

For any questions, you can email us directly:  
[sales@integrated-circuit.com](mailto:sales@integrated-circuit.com)



P/N: 46562-3003

SECTION Z-Z

- NOTES:
1. MATERIALS:  
- HOUSINGS: LCP UL94 V-0, COLOR: BLACK.  
- TERMINALS: COPPER ALLOY.  
- PLATING: 0.000127 INCH NICKEL OVERALL WITH 0.00254 SELECTIVE TIN ON COMPLIANT PINS AND 0.000762 SELECTIVE GOLD ON CONTACT AREA.
  2. ASSEMBLIES PACKED IN TRAYS. SPQ: TBD.
  3. PCB BOARD REQUIRES THRU HOLES. REFER TO PS-46436-100 FOR DETAILS.
  4. PRODUCT SPEC: PS-46436-100.
  5. APPLICATION SPEC: AS-46436-100.
  6. PRODUCT TO MEET RoHS REQUIREMENTS.
  7. ASSEMBLY MATES WITH PLUG ASSEMBLY. P/N 46437-3003.

<b>QUALITY SYMBOLS</b> 4 PLACES ±--- ±--- 3 PLACES ±--- ±--- 2 PLACES ±0.25 ±--- 1 PLACE ±0.25 ±--- ANGULAR ±1/2°	<b>GENERAL TOLERANCES (UNLESS SPECIFIED)</b> mm INCH		<b>DIMENSION STYLE</b> MM ONLY		<b>SCALE</b> 3:1	<b>DESIGN UNITS</b> METRIC	THIRD ANGLE PROJECTION
	DRAWN BY: KJKOH CHECKED BY: JNG APPROVED BY: SHONG		DATE: 2009/03/11 DATE: 2009/05/06 DATE: 2009/05/06		<b>TITLE</b> VERT RECPT ASSY 2P-24S-2P, PRESS-FIT TEN60 POWER FAMILY		
	MATERIAL NO: 46562-3003 DRAWING NO: 2009/01/22 CHECKING: 2009/02/08 APPROVAL: 2009/02/10 REVISIONS:		MATERIAL NO: 46562-3003		DOCUMENT NO: SD-46562-3003		
	DRAFT WHERE APPLICABLE MUST REMAIN WITHIN DIMENSIONS		SIZE: D		THIS DRAWING CONTAINS INFORMATION THAT IS PROPRIETARY TO MOLEX INCORPORATED AND SHOULD NOT BE USED WITHOUT WRITTEN PERMISSION		