

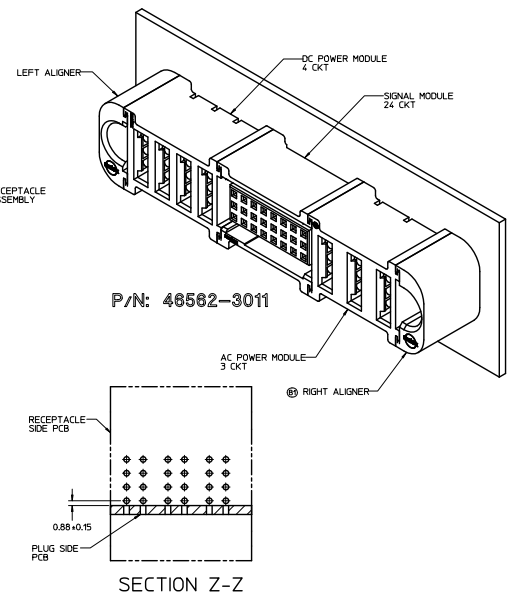
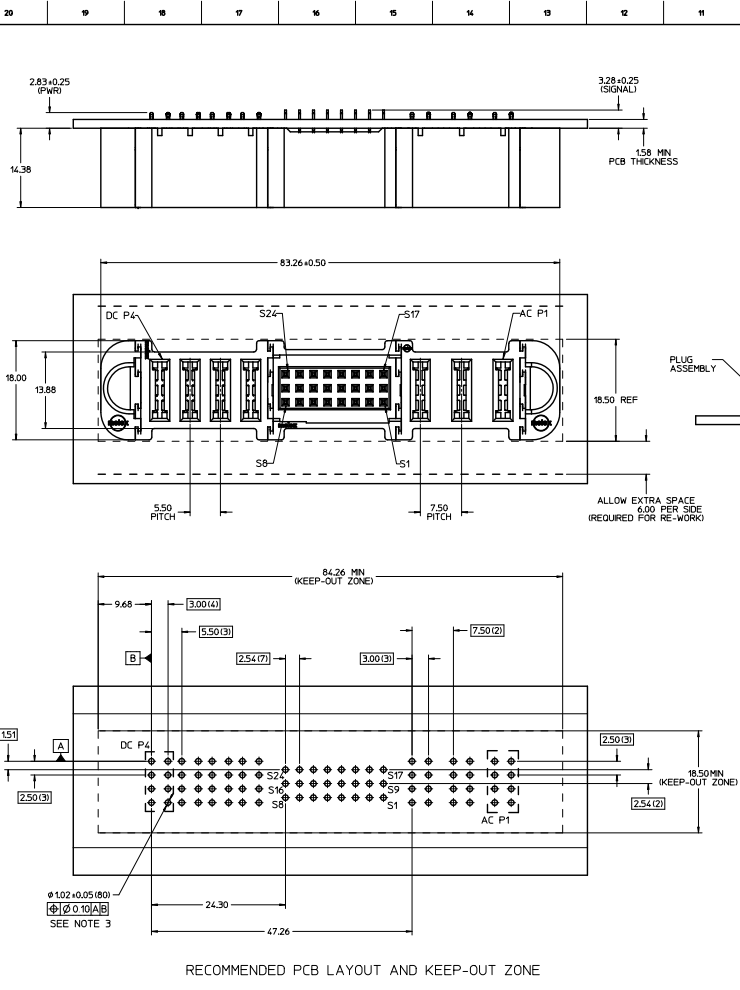
Excellent Integrated System Limited

Stocking Distributor

Click to view price, real time Inventory, Delivery & Lifecycle Information:

[Molex Connector Corporation](#)
[0465623011](#)

For any questions, you can email us directly:
sales@integrated-circuit.com



- NOTES:
- MATERIAL:
 - HOUSINGS: LCP UL94 V-0, COLOR: BLACK.
 - TERMINALS: COPPER ALLOY.
 - PLATING: 0.000127 NICKEL OVERALL WITH 0.00254 SELECTIVE TIN ON COMPLIANT PINS, AND 0.000762 SELECTIVE GOLD ON CONTACT AREA.
 - ASSEMBLES PACKED IN TRAYS, SPO: TBD.
 - PC BOARD REQUIRES THRU HOLES, REFER TO PS-46436-100 FOR DETAILS.
 - PRODUCT SPEC: PS-46436-100.
 - APPLICATION SPEC: AS-46436-100.
 - PRODUCT TO MEET ROHS REQUIREMENTS.
 - ASSEMBLY MATES WITH PLUG ASSEMBLY, P/N 46437-3011.

UPDATE DESCRIPTION REC. NO. LCP/2009-1793 DRAWING/WARD/PMS 2009/07/22 CHECKING 2009/07/08 APPROVAL 2009/07/10 REV. DESCRIPTION	QUALITY SYMBOLS		GENERAL TOLERANCES (UNLESS SPECIFIED)		DIMENSION STYLE MM ONLY		SCALE 3:1	DESIGN UNITS METRIC	THIRD ANGLE PROJECTION
			4 PLACES ± --- ± --- 3 PLACES ± --- ± --- 2 PLACES ± 0.25 ± --- 1 PLACE ± 0.25 ± --- ANGULAR ± 1/2°		DRAWN BY DATE KJKOH 2009/03/11 CHECKED BY DATE --- --- APPROVED BY DATE SHONG 2009/05/06		TITLE VERT RECPT ASSY 5P-24S-5P, PRESS-FIT TEN60 POWER FAMILY		SHEET NO. 1 OF 1
			DRAFT WHERE APPLICABLE MUST REMAIN WITHIN DIMENSIONS		MATERIAL NO. 46562-3011		DOCUMENT NO. SD-46562-311		
			THIS DRAWING CONTAINS INFORMATION THAT IS PROPRIETARY TO MOLEX INCORPORATED AND SHOULD NOT BE USED WITHOUT WRITTEN PERMISSION						