

Excellent Integrated System Limited

Stocking Distributor

Click to view price, real time Inventory, Delivery & Lifecycle Information:

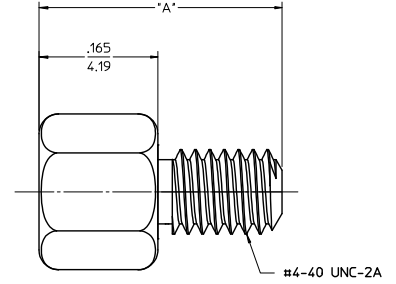
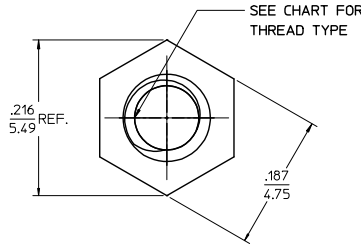
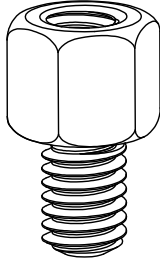
[Molex Connector Corporation](#)
[0749620002](#)

For any questions, you can email us directly:

sales@integrated-circuit.com

MAT'L NO.	INTERNAL THREAD	DIM. 'A'	MATERIAL / PLATING
74962-0001	4-40 UNC-2B	.338 / 8.60	1215 STEEL
74962-0002	M3x0.5 CLASS 6H	.338 / 8.60	ZN CLEAR TRIVALENT CHROMATE
74962-0003	4-40 UNC-2B	.378 / 9.60	1215 STEEL
74962-0004	M3x0.5 CLASS 6H	.378 / 9.60	ZN CLEAR TRIVALENT CHROMATE

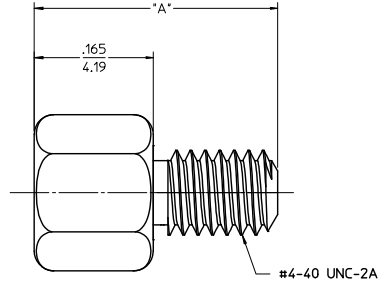
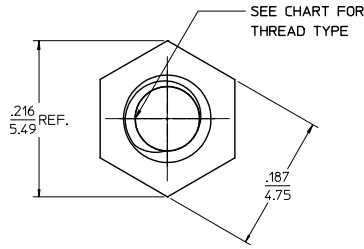
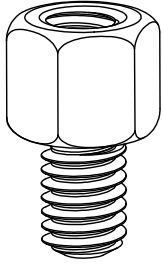
NOTES:
 1. PARTS ARE PACKAGED IN POLY BAGS CONSISTING OF 40 PIECES.
 2. INTERNAL AND EXTERNAL THREADS TO WITHSTAND A MINIMUM APPLIED TORQUE OF 5 lbf in/5.76 kgf cm.



CHANGED MATERIAL EC NO.: LCP2009-2659 DRWN: JANTELEZ 4/28/09 CHKD: 2009/06/09 APPR: MBANAKIS2009/06/09	QUALITY SYMBOLS	GENERAL TOLERANCES (UNLESS SPECIFIED)		SCALE 10:1	DESIGN UNITS INCH	THIRD ANGLE PROJECTION	REVISE ON CAD ONLY
	DESCRIPTION ▽-0 ▽-0	4 PLACES	mm	INCH	DIMENSION STYLE IN/MM		TITLE TDP 3/16" HEX JACKPOST
		3 PLACES	± .010		DRAWN BY TMCCLELL	DATE 03/03/11	
		2 PLACES	± 0.25		CHECKED BY	DATE	
	1 PLACE	± .010		APPROVED BY MBANAKIS		DATE 08/11/17	MATERIAL NO. SEE CHART
		ANGULAR ±1/2°		APPROVED BY		DATE	DOCUMENT NO. SD-74962-000
		DRAFT WHERE APPLICABLE MUST REMAIN WITHIN DIMENSIONS		APPROVED BY		DATE	SHEET NO. 1 OF 1
		THIS DRAWING CONTAINS INFORMATION THAT IS PROPRIETARY TO MOLEX INCORPORATED AND SHOULD NOT BE USED WITHOUT WRITTEN PERMISSION					

MAT'L NO.	INTERNAL THREAD	DIM. "A"	MATERIAL / PLATING
74962-1000	4-40 UNC-2B	.338 / 8.60	STAINLESS STEEL 303
74962-2000	M3x0.5 CLASS 6H	.338 / 8.60	STAINLESS STEEL 303
74962-3000	4-40 UNC-2B	.378 / 9.60	STAINLESS STEEL 303
74962-4000	M3x0.5 CLASS 6H	.378 / 9.60	STAINLESS STEEL 303
74962-0005	4-40 UNC-2B	.421 / 10.69	STAINLESS STEEL 303
74962-0006	M3x0.5 CLASS 6H	.421 / 10.69	STAINLESS STEEL 303

NOTES:
 1. PARTS ARE PACKAGED IN POLY BAGS CONSISTING OF 40 PIECES.
 2. INTERNAL AND EXTERNAL THREADS TO WITHSTAND A MINIMUM APPLIED TORQUE OF 5 lbf in/5.76 kgf cm.

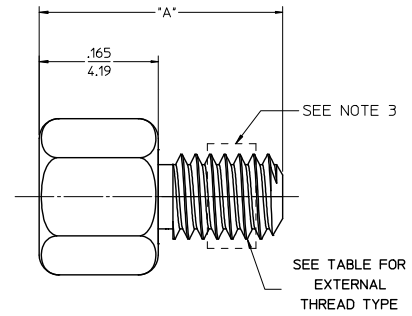
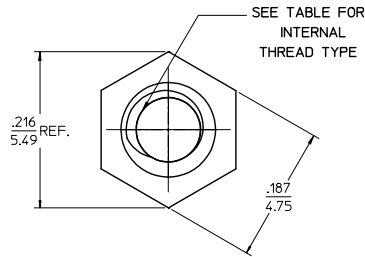
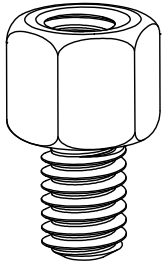


INITIAL RELEASE EC NO: UCP2015-0921 DRAWN BY: TIBARRA 2014/08/01 CHECKED BY: MPOFF 2014/08/29 APPROVED BY: MILLER 2014/09/04 A	QUALITY SYMBOLS ∇=0 ∇=0 ∇=0	GENERAL TOLERANCES (UNLESS SPECIFIED)		DIMENSION STYLE IN/MM		SCALE 10:1	DESIGN UNITS INCH	THIRD ANGLE PROJECTION	
		4 PLACES ± .010	± .010	DRAWN BY	DATE	TITLE TDP 3/16" HEX JACKPOST molex MATERIAL NO. SD-74962-1000 DOCUMENT NO. SHEET NO. 1 OF 1			
		3 PLACES ± 0.25	± .010	CHECKED BY	DATE				
		2 PLACES ± .010	± .010	MPOFF	DATE				
1 PLACE ± .010	± .010	APPROVED BY	DATE						
0 PLACE ± .010	± .010	MILLER	DATE	DRAFT WHERE APPLICABLE MUST REMAIN WITHIN DIMENSIONS					

MAT'L NO.	INTERNAL THREAD	EXTERNAL THREAD	DIM. "A"	MATERIAL / PLATING
74962-1110	4-40 UNC-2B	4-40 UNC-2A	.338 / 8.60	STAINLESS STEEL 303 / NYLON TORQUE PATCH

NOTES:

- PARTS ARE PACKAGED IN POLY BAGS CONSISTING OF 40 PIECES.
- INTERNAL AND EXTERNAL THREADS TO WITHSTAND A MINIMUM APPLIED TORQUE OF 5 lbf in/5.76 kgf cm.
- NYLOK® TORQUE PATCH LOCATED TO THE LEFT OF THE FIRST OR SECOND FULL THREADS AND COVERS 3 THREADS MINIMUM.



MOD NOTE 3 EC NO: UCP2016-1139 DRAWN BY: TIBARRA 2015/09/14 CHKORCAIN 2015/09/14 APPR:SMILLER 2015/09/17	QUALITY SYMBOLS ∇=0 ∇=0 ∇=0	GENERAL TOLERANCES (UNLESS SPECIFIED)		DIMENSION STYLE		SCALE	DESIGN UNITS	THIRD ANGLE PROJECTION	
		mm	INCH	IN/MM		10:1	INCH	☉	
		4 PLACES ±	---	DRAWN BY	DATE	TITLE TDP 3/16" HEX JACKPOST WITH TORQUE PATCH molex MATERIAL NO. SD-74962-1110 DOCUMENT NO. SHEET NO. 1 OF 1			
		3 PLACES ±	---	CHECKED BY	DATE				
2 PLACES ±	0.25	DMORGAN	2017/07/09						
1 PLACE ±	---	APPROVED BY	DATE						
0 PLACE ±	---	SMILLER	2015/08/14	ANGULAR ±1/2°		MATERIAL NO. SD-74962-1110 DOCUMENT NO. SHEET NO. 1 OF 1			
DRAFT WHERE APPLICABLE MUST REMAIN WITHIN DIMENSIONS				SEE TABLE		THIS DRAWING CONTAINS INFORMATION THAT IS PROPRIETARY TO MOLEX INCORPORATED AND SHOULD NOT BE USED WITHOUT WRITTEN PERMISSION			