

## Excellent Integrated System Limited

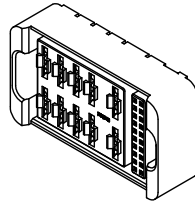
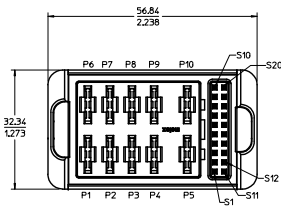
Stocking Distributor

Click to view price, real time Inventory, Delivery & Lifecycle Information:

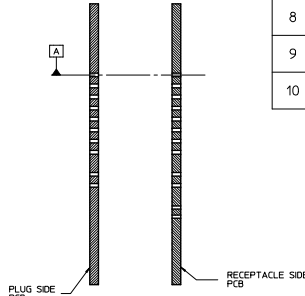
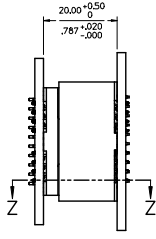
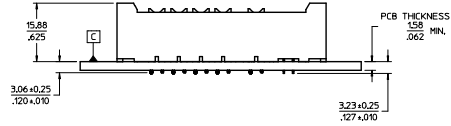
[Molex Connector Corporation](#)  
[0765410003](#)

For any questions, you can email us directly:

[sales@integrated-circuit.com](mailto:sales@integrated-circuit.com)

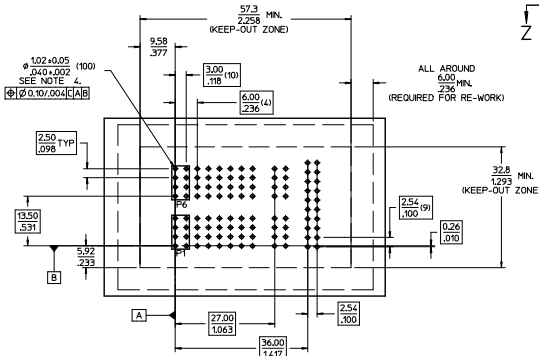


P/N 76541-0003 SHOWN



SECTION Z-Z

RELATIVE POSITION  
DATUM -A- AND -B- FOR BOTH  
PCBS ARE OVERLAPPING



RECOMMENDED PCB LAYOUT

ITEM NO	PART NUMBER	NO OF POWER	NO OF SIGNAL	MATES WITH PLUG ASSY P/N:
1	76541-0002	10	16	76546-0002
2	76541-0003	10	20	76546-0003 OR 76546-0010
3	76541-0012	10	N/A	76546-0012
4				
5				
6				
7				
8				
9				
10				

NOTES:

- MATERIAL: HOUSING - LCP OR EQUIVALENT, 94V-0. COLOR: BLACK  
CONTACTS - COPPER ALLOY
- FINISH: SELECT GOLD - 0.38µM MIN IN  
SELECT TIN - 2.54µM MIN IN  
BOTH OVER NICKEL - 1.27µM MIN IN
- SEE PRODUCT SPEC FOR ROHS REQUIREMENTS.
- PCB REQUIRES SOLDER THRU HOLES. SEE PRODUCT SPEC FOR DETAILS.
- MATES TO MOLEX P/N 76546-SERIES. SEE CHART.
- PRODUCT SPECIFICATION: PS-46436-100.
- PACKAGING PER PK-76541-002.
- INSERTION FORCE 89N/20lbs MAX PER TAIL.
- PRESS FIT TOOL P/N TBD. SEE APPLICATION SPEC AS-46436-100.

QUALITY SYMBOLS	GENERAL TOLERANCES (UNLESS SPECIFIED)	DIMENSION STYLE		SCALE	DESIGN UNITS	THIRD ANGLE PROJECTION
		MM	INCH			
ADD P/N ECN NO. LCP2015-4352 DRAWN BY: JALLES 2015/01/28 CHECKED BY: SZCOR 2015/01/28 APPROVED BY: APATEL 2015/01/28	4 PLACES ±.010	MM	INCH	2:1	METRIC	
	3 PLACES ±.010	MM	INCH	2:1	METRIC	
	2 PLACES ±0.25 ±.010	MM	INCH	2:1	METRIC	
	1 PLACE ±0.25 ±.010	MM	INCH	2:1	METRIC	
	ANGULAR ±1/2°					
	DRAFT WHERE APPLICABLE MUST REMAIN WITHIN DIMENSIONS					
	SEE CHART					
	THIS DRAWING CONTAINS INFORMATION THAT IS PROPRIETARY TO MOLEX INCORPORATED AND SHOULD NOT BE USED WITHOUT WRITTEN PERMISSION					