

Excellent Integrated System Limited

Stocking Distributor

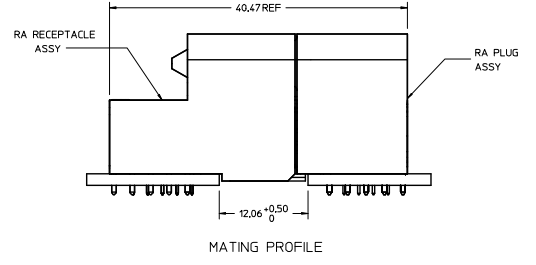
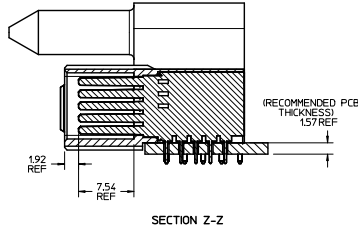
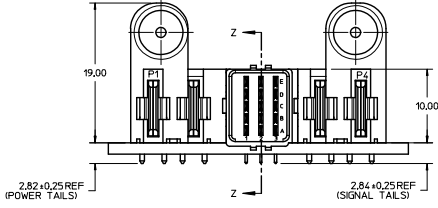
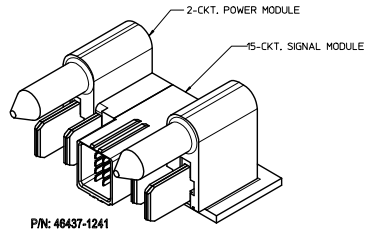
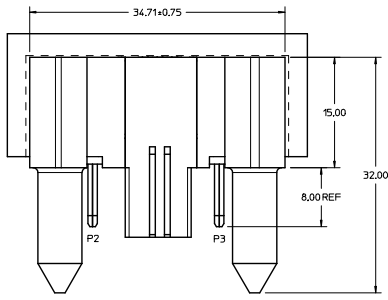
Click to view price, real time Inventory, Delivery & Lifecycle Information:

[Molex Connector Corporation](#)
[0464371241](#)

For any questions, you can email us directly:

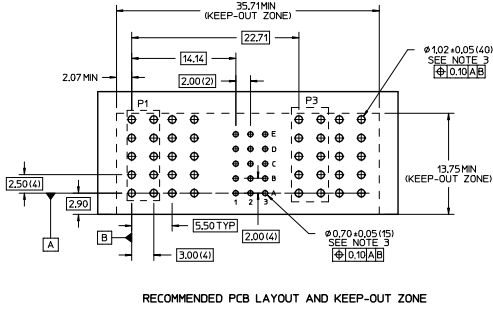
sales@integrated-circuit.com

20 19 18 17 16 15 14 13 12 11 10 9 8 7 6 5 4 3 2 1



NOTES:

- MATERIAL:
-HOUSINGS: LCP UL94 V-0, COLOR: BLACK.
-TERMINALS: COPPER ALLOY.
-PLATING: 0.000127 NICKEL OVERALL WITH 0.00254 SELECTIVE MATTE TIN ON TAILS AND 0.000762 SELECTIVE GOLD ON CONTACT AREA.
- PACKAGING ASSEMBLIES TO BE TRAY PACKED, STD. QUANTITY: TBD.
- PC BOARD REQUIRES SOLDER THRU HOLES. REFER TO PS-46436-100 FOR DETAILS.
- PRODUCT SPEC: PS-46436-100.
- APPLICATION SPEC: AS-46436-100.
- SEE PRODUCT SPEC. FOR ROHS REQUIREMENTS.
- ASSEMBLY MATES WITH MOLEX RECEPTACLE ASSEMBLY, P/N 46562-1241 OR 46436-1241.



PRELIMINARY RELEASE EC NO. LCP2011-3524 DRAWN: IMPATIL 2011/05/16 CHECKED: KLEE 2011/05/16 APPROVED: APATEL 2012/12/13 APPR. BY:	QUALITY SYMBOLS	GENERAL TOLERANCES (UNLESS SPECIFIED)	DIMENSION STYLE	SCALE	DESIGN UNITS	THIRD ANGLE PROJECTION
	∇=0	mm INCH	MM ONLY	4:1	METRIC	
	∇=0	4 PLACES ±--- ±---	DRAWN BY	DATE	TITLE	
	∇=0	3 PLACES ±--- ±---	IMPATIL	2011/05/16	RA PLUG ASSY	
	2 PLACES ±0.25 ±---	CHECKED BY	DATE			
	1 PLACE ±0.25 ±---	KLEE	2011/05/16	TEN60 POWER FAMILY		
	ANGULAR ±1/2°	APPROVED BY	DATE			
		APATEL	2012/12/13	MOLEX INCORPORATED		
		DRAFT WHERE APPLICABLE MUST REMAIN WITHIN DIMENSIONS	MATERIAL NO.	DOCUMENT NO.		
			46437-1241	SD-46437-1241		
			SIZE D	THIS DRAWING CONTAINS INFORMATION THAT IS PROPRIETARY TO MOLEX INCORPORATED AND SHOULD NOT BE USED WITHOUT WRITTEN PERMISSION		