



Distributor of Molex Connector Corporation: Excellent Integrated System Limited

Datasheet of 1201140052 - TOP MOUNT 4 PORT PNP W/ CONN.

Contact us: sales@integrated-circuit.com Website: www.integrated-circuit.com

Excellent Integrated System Limited

Stocking Distributor

Click to view price, real time Inventory, Delivery & Lifecycle Information:

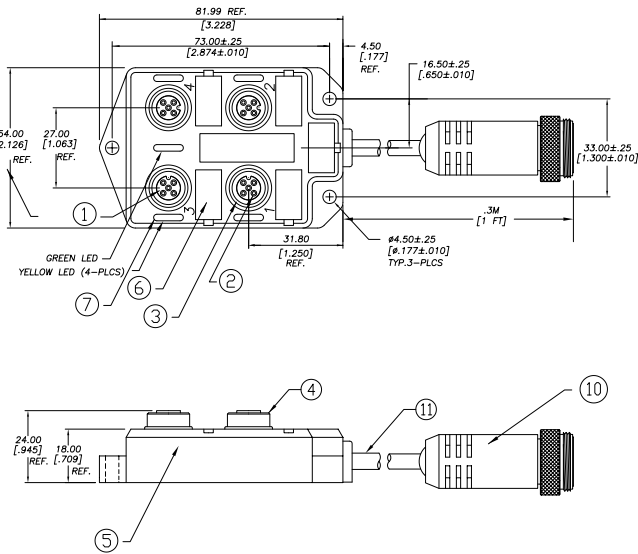
[Molex Connector Corporation](#)

[1201140052](#)

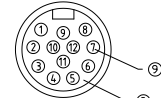
For any questions, you can email us directly:

sales@integrated-circuit.com

MATERIAL NUMBER	OLD PART NUMBER	FINISHED LENGTH
1201140052	BTY496P-FBP-05	16.40' +6.50' -0 [5.0M +165.1 -0]



FRONT VIEW - MALE INSERT



22 AWG	1	GREEN
22 AWG	2	WHITE
22 AWG	3	GREY
	4	NOT USED
	5	NOT USED
	6	NOT USED
	7	NOT USED
	8	NOT USED
18 AWG	9	BLUE
18 AWG	10	GREEN/YELLOW
22 AWG	11	YELLOW
18 AWG	12	BROWN

NUMBERS IN BRACKETS ARE FOR NUMBERED CORED CABLE

ITEM	COMPONENT	MATERIAL	FINISH
1	INSERT	NYLON	BLACK
2	CONTACT SOCKET	COPPER ALLOY	GOLD OVER NICKEL
3	O-RING	VITON	RED
4	RECEPTACLE SHELL	BRASS	NICKEL PLATED
5	HOUSING	PBT	YELLOW
6	LABEL	ABS	WHITE
7	LENS	NYLON	CLEAR
8	INSERT	PVC	YELLOW
9	CONTACT PIN	COPPER ALLOY	GOLD OVER NICKEL
10	RECEPTACLE SHELL	BRASS	NICKEL PLATED
11	CABLE, 18AWG, 3 CONDUCTOR, 22AWG, 8 CONDUCTOR, 300V	PUR	BLACK

VOLTAGE RATING	10-30 VDC
AMPERAGE RATING PER PORT	4 AMPS
PROTECTION	IP67
OPERATING TEMPERATURE	-20°C TO 90°C
UL CERTIFICATIONS	UL RECOGNIZED, FILE NO. E46237
CSA CERTIFICATIONS	CSA CERTIFIED, FILE NO. LR6837

ADD 2 PINS TO TABLE EC NO: WEL2010-0441 DRAWN: BBRAUCH 2010/03/17 CHKD: FP APPR: FPACHER 2010/03/19 DESCRIPTION: MICRO-CHANGE MPIS 4 PORT TOP MOUNT PNP #18/3 + #22/8 CABLE REV: 1	QUALITY SYMBOL ▽=0 ▽=0	GENERAL TOLERANCES (UNLESS SPECIFIED)		DIMENSION STYLE IN/MM		SCALE 2:1	DESIGN UNITS METRIC	THIRD ANGLE PROJECTION		
		4 PLACES ±.--- ±.--- 3 PLACES ±.--- ±.--- 2 PLACES ±.--- ±.01 1 PLACE ±0.3 ±.---	mm INCH ±.--- ±.--- ±.--- ±.01 ±0.3 ±.---	DRAWN BY: BBRAUCH DATE: 2010/03/17	CHECKED BY: FP DATE: 2010/03/17	TITLE MICRO-CHANGE MPIS 4 PORT TOP MOUNT PNP #18/3 + #22/8 CABLE				
		ANGULAR ±.---°		APPROVED BY: FPACHER DATE: 2010/03/18	MOLEX INCORPORATED					
		DRAFT WHERE APPLICABLE MUST REMAIN WITHIN DIMENSIONS		MATERIAL NO.: SEE CHART	DOCUMENT NO.: SD-120114-065	SHEET NO.: 1 OF 1				

THIS DRAWING CONTAINS INFORMATION THAT IS PROPRIETARY TO MOLEX INCORPORATED AND SHOULD NOT BE USED WITHOUT WRITTEN PERMISSION