

Excellent Integrated System Limited

Stocking Distributor

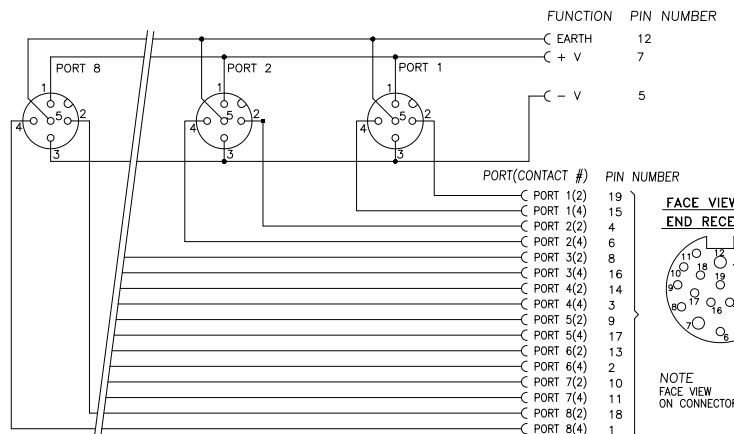
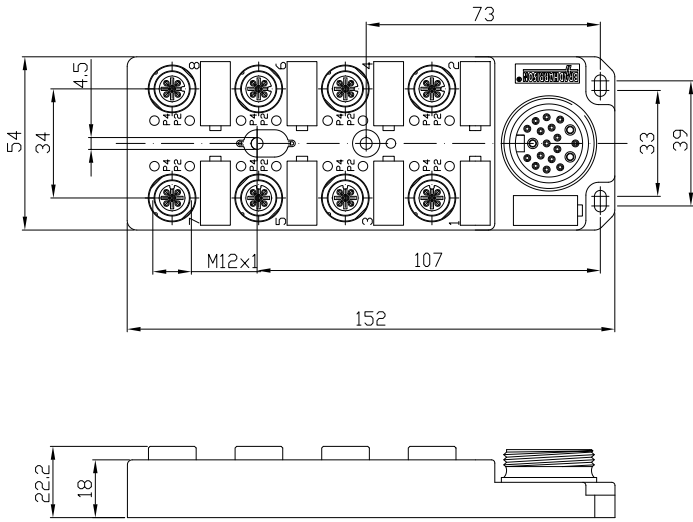
Click to view price, real time Inventory, Delivery & Lifecycle Information:

[Molex Connector Corporation](#)

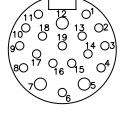
[1201140087](#)

For any questions, you can email us directly:

sales@integrated-circuit.com



FACE VIEW OF END RECEPTACLE



NOTE: FACE VIEW ON CONNECTOR

MATERIAL NUMBER	OLD PART NUMBER
1201140087	BTY8030-FBB

VOLTAGE RATING	10-30 VDC
AMPERAGE RATING PER PORT	4 AMPS
PROTECTION	IP67
OPERATING TEMPERATURE	-25°C TO +90°C
UL CERTIFICATIONS	UL RECOGNIZED, FILE NO. E46237
CSA CERTIFICATIONS	CSA CERTIFIED, FILE NO. LR6837

ITEM	COMPONENT	MATERIAL	FINISH
1	CONTACT SOCKET	COPPER ALLOY	GOLD OVER NICKEL
2	O-RING	VITON	RED
3	RECEPTACLE SHELL	BRASS	NICKEL PLATED
4	HOUSING	PBT	YELLOW
5	LABEL	ABS	WHITE
6	LENS	NYLON	CLEAR

DESCRIPTION EC NO: WEU2010-0452 DRWN: BBRAUCH 2010/03/23 CHKD: FP APPR: FPACHER 2010/03/24	QUALITY SYMBOLS ▽ = 0 ◇ = 0	GENERAL TOLERANCES (UNLESS SPECIFIED)		DIMENSION STYLE MM ONLY	SCALE 2:1	DESIGN UNITS METRIC	THIRD ANGLE PROJECTION
		4 PLACES ±--- ±---	3 PLACES ±--- ±---	2 PLACES ±--- ±01	1 PLACE ±0.3 ±---	ANGULAR ± --- °	DRAWN BY BBRAUCH 2010/03/23
DRAFT WHERE APPLICABLE MUST REMAIN WITHIN DIMENSIONS		see table		SD-120114-090		MOLEX INCORPORATED	
1	REV	SIZE A2		THIS DRAWING CONTAINS INFORMATION THAT IS PROPRIETARY TO MOLEX INCORPORATED AND SHOULD NOT BE USED WITHOUT WRITTEN PERMISSION			