

## Excellent Integrated System Limited

Stocking Distributor

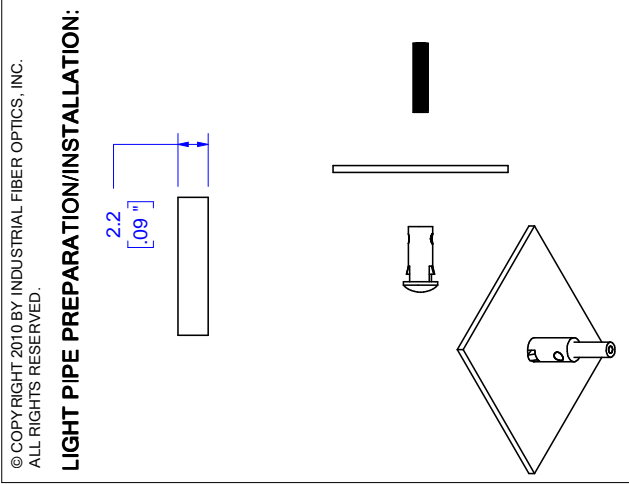
Click to view price, real time Inventory, Delivery & Lifecycle Information:

[Industrial Fiber Optics, Inc.](#)  
[51 0360](#)

For any questions, you can email us directly:

[sales@integrated-circuit.com](mailto:sales@integrated-circuit.com)

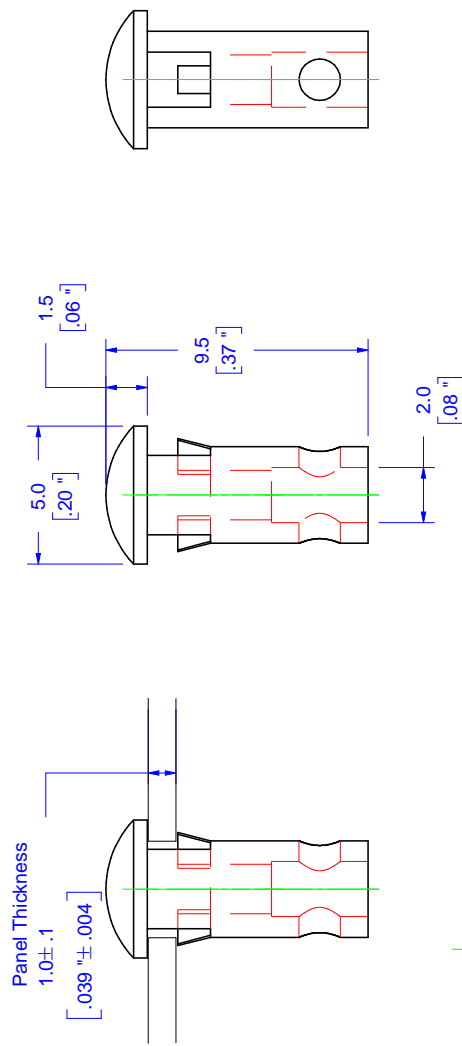
REVISIONS				
REV	DESCRIPTION	ECO	DATE	APVD
A	Initial release		11/12/2008	RD
B	Redrew, fixed diameter of mounting hole	0065	2/9/2010	AR



**NOTES:**

1. ROHS COMPLIANT
2. UL 94V-2 FLAMMABILITY RATING
3. -40°C TO 85°C OPERATING TEMPERATURE
4. SUITABLE FOR LIGHT PIPE WITH  $\varnothing 2.2\text{mm}$  JACKET AND OPTICAL CORE NO GREATER THAN  $\varnothing 1.5\text{mm}$

**METRIC**



**MOUNTING HOLE**

PART IS MADE OF TRANSPARENT POLYCARBONATE.

UNLESS OTHERWISE SPECIFIED DIMENSIONS MILLIMETERS [IN.]		PRODUCT	Light Pipe
TOLERANCES		MATERIAL	Polycarbonate
0 PLC: $\pm 1$	SURFACE 3.2/	FINISH	
1 PLC: $\pm .25$	TEXTURE: $\nabla$	DRAWN BY	B. Bidwell
2 PLC: $\pm .127$		DATE	2/9/2010
3 PLC: $\pm .025$		CHECKED BY	A. Reyes
4 PLC: $\pm .013$	ANGLE: $\pm 1/2^\circ$	DATE	2/11/2010
REMOVE BURRS AND SHARP EDGES FLATNESS .005mm PER mm ALL DIMENSIONS AFTER FINISH		DO NOT SCALE DRAWING	

INDUSTRIAL FIBER OPTICS TEMPE, AZ 85281			
NAME			
Lens, Light Pipe to Panel			
SIZE	SCALE	PART NUMBER	REV
A	4:1	51 0360	B

