

Excellent Integrated System Limited

Stocking Distributor

Click to view price, real time Inventory, Delivery & Lifecycle Information:

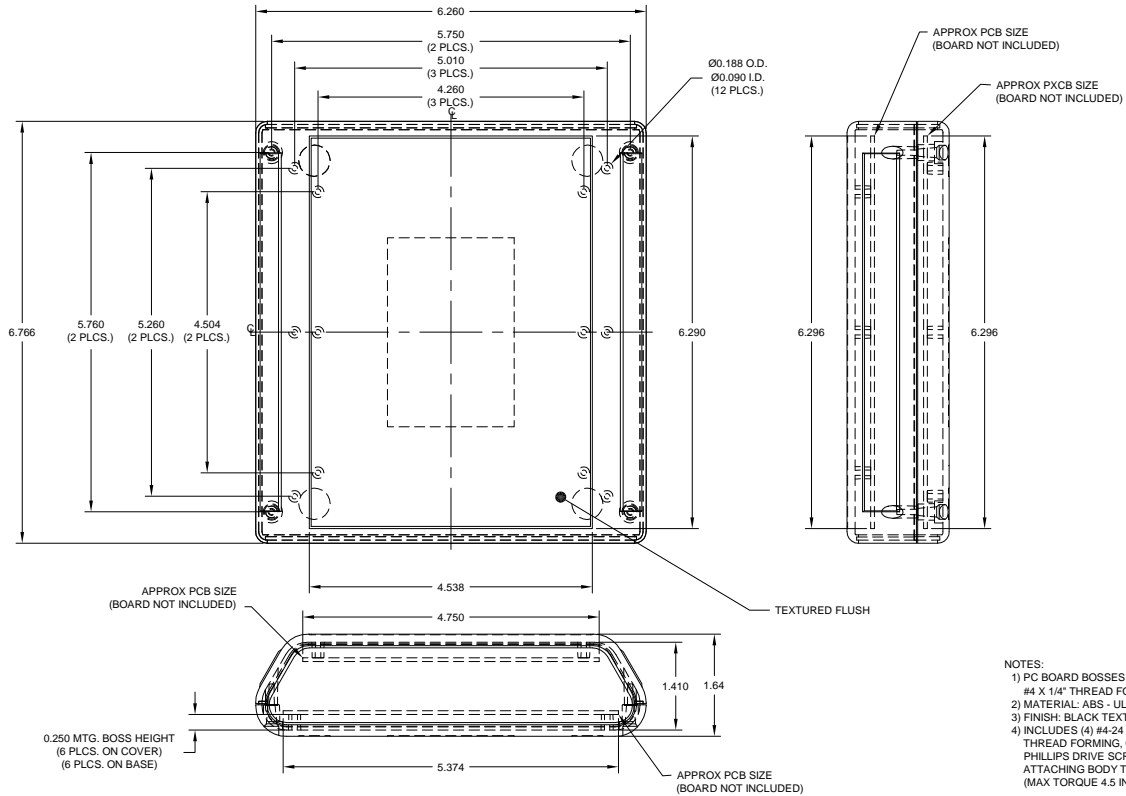
[BUD Industries, Inc.](#)

[PC-11565](#)

For any questions, you can email us directly:

sales@integrated-circuit.com

DWG. NO.	PC-11565
ISSUE	REVISIONS



- NOTES:
- 1) PC BOARD BOSSES WILL ACCEPT A #4 X 1/4" THREAD FORMING SCREW
 - 2) MATERIAL ABS - UL94-5VA
 - 3) FINISH: BLACK TEXTURE
 - 4) INCLUDES (4) #4-24 X 5/8 HI-LOW THREAD FORMING, CSK, OVAL HEAD, PHILLIPS DRIVE SCREWS FOR ATTACHING BODY TO COVER (MAX TORQUE 4.5 IN-LBS)

ITEM	REQ'D	PART NO.	DESCRIPTION
TOLERANCES:		MAT: AS NOTED	SCALE:
#005 BETWEEN HOLE CENTERS		FINISH: SEE SPEC.	NAME: BUD INDUSTRIES, INC. PLASTICASE STYLE G
#010 FROM SHEARD EDGE		DR: DP	CH: S-24-05
#025 FROM A BENT SURFACE		APP:	BUD INDUSTRIES, INC. WILLDOUGHY, OHIO
#025 BETWEEN ASSEMBLED SURFACES			DWG. NO. PC-11565
UNLESS OTHERWISE SPECIFIED			

QTY. USED ON