

Excellent Integrated System Limited

Stocking Distributor

Click to view price, real time Inventory, Delivery & Lifecycle Information:

[Curtis Industries](#)

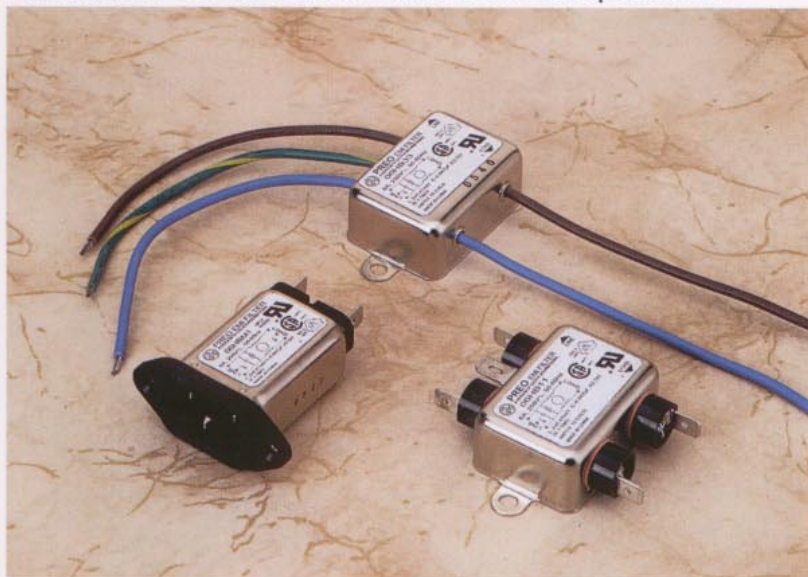
[06HB11](#)

For any questions, you can email us directly:

sales@integrated-circuit.com

PREO Power Line EMI Filters

A Division of Eastek International Corporation



Introduction

The HB series are general purpose EMI filters specially designed for medical and dental equipment, both patient care and nonpatient categories. The leakage current in this series is extremely low to satisfy the stringent leakage current limit imposed by safety regulations for medical and dental equipment, such as UL544 and IEC601.

Minimum Insertion Loss in dB

Common mode (line to ground) in 50 ohm system:

MODEL	Frequency in MHz							
	0.05	0.10	0.15	0.50	1.0	5.0	10	30
06HB11/33/M1	3	7	11	20	22	24	22	18

Differential mode (line to line) in 50 ohm system:

MODEL	Frequency in MHz							
	0.10	0.15	0.50	1.0	3.0	5.0	10	30
06HB11/33/M1	3	6	14	20	30	35	35	35

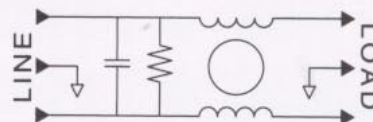
Series HB

For UL544 and IEC601
Health Care Equipment



UL Recognized
CSA Certified
VDE Approved

Schematic



Electrical ratings

Maximum operating voltage: 250 VAC

Operating frequency: 50/60 Hz

Hipot rating (one minute):

Line to Ground: 1500 VAC

Line to Line: 1450 VDC

Maximum leakage current (each line to ground):

@ 120 VAC / 60 Hz: 2 μ A

@ 250 VAC / 50 Hz: 5 μ A

Rated current at 40°C ambient temperature:

06HB11, 06HB33, 06HBM1 6 A

Now in Stock at

EASTEK INTERNATIONAL CORPORATION

114 Joey Drive, Elk Grove, IL 60007, USA

Phone: 847 437 2800 Fax: 847 437 2809

or your local agent