

Excellent Integrated System Limited

Stocking Distributor

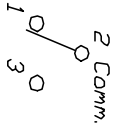
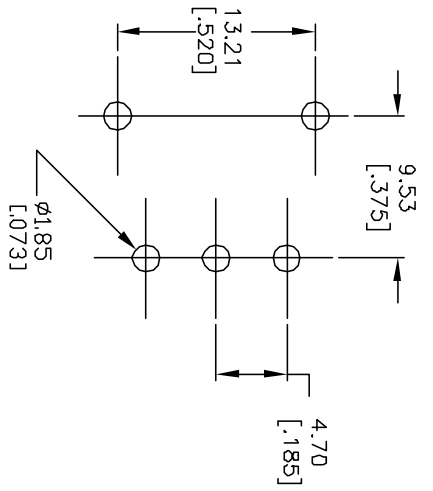
Click to view price, real time Inventory, Delivery & Lifecycle Information:

[E-Switch](#)
[500SSP1S1M6REA](#)

For any questions, you can email us directly:

sales@integrated-circuit.com

SHEET OF



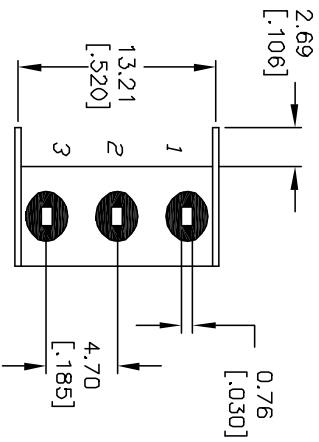
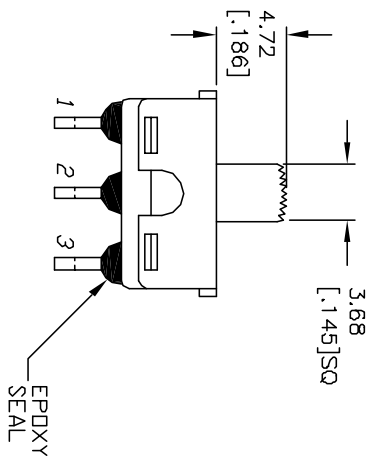
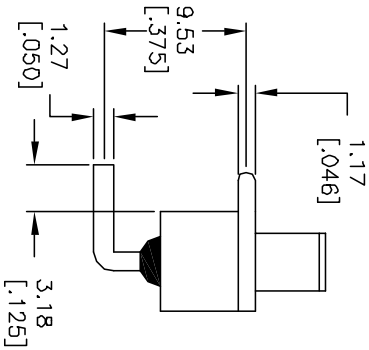
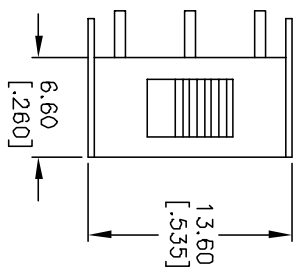
RECOMMENDED P.C.B. LAYOUT

CONTACT CONFIGURATION



NOTES:

1. ALL DIMENSIONS IN MM [INCH]
2. GENERAL TOLERANCE: X.X=±0.4
X.XX=±0.25
3. TERM. NOS. FOR REFERENCE ONLY.
4. CONTACT MATERIAL: GOLD PLATE OVER COPPER ALLOY
5. CONTACT RESISTANCE: 10mΩ TYP.
6. ELECTRICAL LIFE: 30,000 ACTUATIONS AT FULL LOAD
7. INSULATION RESISTANCE: 1,000 MΩ min.
8. DIELECTRIC STRENGTH: 1,000 V RMS @ SEA LEVEL
9. OPERATING TEMPERATURE: -30°C TO 85°C



NOTE:
CONTACTS CROPPED
FOR CLARITY

REV.	ECN No.	DESCRIPTION	DATE	CHKD
B	11946	REVISED AND REDRAWN	1/25/02	CJC
THE INFORMATION CONTAINED IN THIS DOCUMENT IS PROPRIETARY TO E-SWITCH AND IS NOT TO BE COPIED OR TRANSMITTED				

TITLE	SCALE	DATE	DR	DWG	REV
500 SSP 1 S1 M6 R E A	2:1	1/25/02	CJC	TS11001	B

E-SWITCH®