



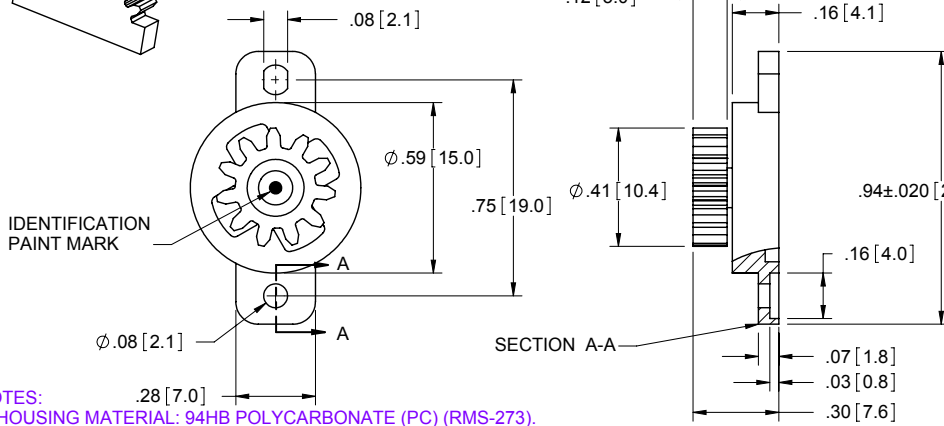
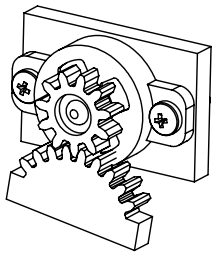
## Excellent Integrated System Limited

Stocking Distributor

Click to view price, real time Inventory, Delivery & Lifecycle Information:

[Essentra Components \(formerly Richco, Inc.\)  
RFRT-PN4](#)

For any questions, you can email us directly:  
[sales@integrated-circuit.com](mailto:sales@integrated-circuit.com)



PART NO.	TORQUE (gf.cm) @ 20 RPM & 23°C	PAINT MARK
RFRT-PN3	25±5	WHITE
RFRT-PN4	40±10	YELLOW
RFRT-PN5	80±15	GREEN
RFRT-PN6	60±12	BLUE
RFRT-PN7	130±26	PINK

GEAR SPECIFICATION	
TYPE	STANDARD SPUR
TOOTH PROFILE	INVOLUTE GEAR
PRESSURE ANGLE	20°
NUMBER OF TEETH	11
PITCH CIRCLE DIA.	Ø.35 [Ø8.8]

- NOTES:
- HOUSING MATERIAL: 94HB POLYCARBONATE (PC) (RMS-273).
  - COLOR: BLACK.
  - SHAFT AND GEAR MATERIAL: ACETAL (RMS-160)
  - IDENTIFICATION PAINT MARK COLOR INDICATES TORQUES VALUE (RMS-239)
  - COMPONENTS (INSIDE HOUSING):  
A) SILICONE OIL (RMS-209)  
B) O-RING: SILICONE RUBBER (RMS-210)

j	SEE CO200131	SK	02/20/08
i	SEE ECN #1289 FOR CHANGES	SK	02/15/07
H	SEE ECN #1266 FOR CHANGES	SK	12/14/06
G	SEE ECN #1177 FOR CHANGES	SK	05/24/06
F	SEE ECN #1051 FOR CHANGES	SK	09/08/05
E	SEE ECN #807 FOR CHANGES	SM	06/22/04
D	TORQUE TOL CHANGED BACK TO 7	SM	04/11/02
C	TORQUE TOL. 5 WAS 7	SM	04/09/02
B	UPDATED DRAWING. TORQUE TOL. 7 WAS 5	RG	02/28/02
A	RELEASED FOR PRODUCTION	RG	01/08/02
REV.	DESCRIPTION	ENGR.	DATE

TITLE: TWO WAY ROTARY DAMPER				DWG IN IN [MM]		FINAL	
CREATED USING SOLIDWORKS	FILE #: RFRT-PNX	DWN: DJZ	APP: -	FINAL			
TOLERANCES UNLESS NOTED .XX±.010 .XXX±.005 FRACTION±1/64 ANG=±1°	SHEET: 1 OF 1	SHEET SIZE: A	DT: 12/06/01	CHKD: -	PART #		PRINT TYPE
RE: RICHCO, INC.		RICHCO, INC. ENG@RICHCO-INC.COM (773) 539-4060		SEE TABLE		CA	