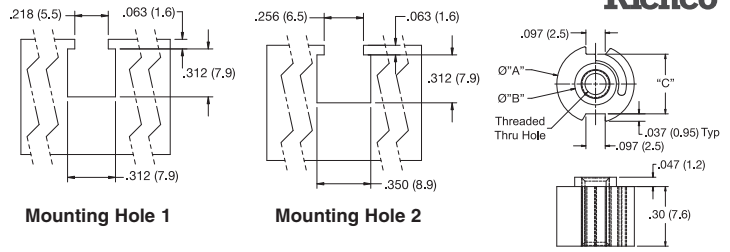
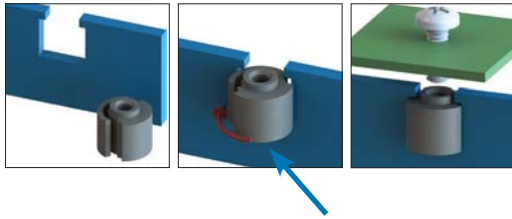




SHEET EDGE INSERT, SHELF ACCESSORIES & SUCTION CUPS

SEI Sheet Edge Insert



Installation:

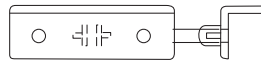
1. Install insert notch into the side of the panel opening
2. Rotate spring leg of insert toward the panel. This compresses the spring leg allowing it to pass through the notch in the panel
3. Leg will snap back to its normal position securing insert in panel

- Provides strong threads in metal sheets too thin to be tapped
- Fastens to the edges of thin sheets
- Alternative to self-clinching inserts
- Can be removed by pinching the spring legs and rotating
- Internal thread requires a screwdriver for installation
- Material: UL94 V-2 Nylon 6/6, RMS-01
- Color: Black

Item No.	Thread Type	"A" Ø	"B" Ø	"C"	Panel Thickness	Mounting Hole	Pack Qty.
SEI-1	#6-32 UNC	.39 (9.9)	.21 (5.3)	.30 (7.6)	.050 - .095 (1.27-2.41)	1	1,000
SEI-2	M4	.39 (9.9)	.21 (5.3)	.30 (7.6)	.050 - .091 (1.27-2.3)	1	1,000
SEI-3	M3	.39 (9.9)	.21 (5.3)	.30 (7.6)	.050 - .091 (1.27-2.3)	1	1,000
SEI-4	M5	.43 (10.9)	.25 (6.3)	.34 (8.6)	.050 - .095 (1.27-2.41)	2	1,000
SEI-5	M6	.43 (10.9)	.25 (6.3)	.34 (8.6)	.050 - .095 (1.27-2.41)	2	1,000

NOTE: Screwdriver required for installation

GSS Series Glass Shelf Supports



Specifications:

- Material: Butyrate
- Color: Clear

Features:

- Clamps easily to metal brackets
- Clear butyrate is glass-like in appearance as well as stress and impact resistant

Item No.	Bracket Thickness		Style	Pack Qty.
	In	mm		
GSS1000A	0.093	2.37	Center Back Clip	5,000
GSS1100A	0.093	2.37	Center Front Clip	3,500

RCL Series Retainer Clips



Specifications:

- Material: Natural Nylon or Clear Butyrate

Features:

- Used for retaining panels or screens to an opening in a door
- Attractive and economical method of securing a mirror to a wall or as a means of mounting a picture into a frame

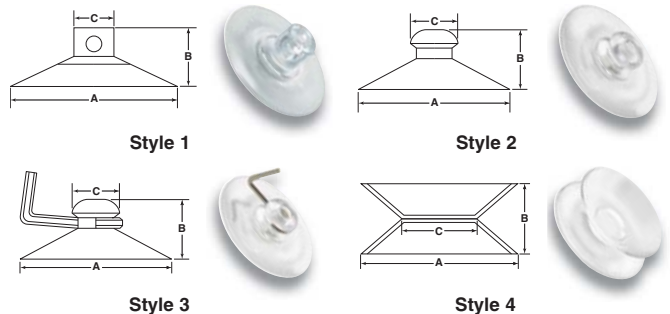
Item No.	Panel Thickness		Material	Pack Qty.
	In	mm		
RCL1000A	0.156	3.96	Nylon	21,000
RCL1000B	0.156	3.96	Butyrate	16,500

SUC Series Suction Cups



Specifications:

- Material: PVC
- Color: Clear



Features:

- **Style 1** is designed with a side pilot hole to be used with string hanger, wire dowels or various other fasteners
- **Style 2** with the mushroom head design can be used with a wide range of self hanging products
- **Style 3** with the hook design is perfect for window mounted signs, ornaments and decorations
- **Style 4** or the double suction cup securely holds, separates, and cushions parallel glass or related surfaces

Item No.	Style	A		B		C		Hole Dia.		Pack Qty.
		In	mm	In	mm	In	mm	In	mm	
SUC100A	1	0.866	22.00	0.331	8.40	0.244	6.20	0.110	2.8	3000
SUC105A	1	0.984	25.00	0.394	10.00	0.311	7.90	0.157	4.0	2000
SUC110A	1	1.181	30.00	0.551	14.00	0.374	9.50	0.185	4.7	1500
SUC115A	1	1.378	35.00	0.492	12.50	0.354	9.00	0.185	4.7	1000
SUC120A	1	1.575	40.00	0.630	16.00	0.354	9.00	0.197	5.0	800
SUC125A	1	1.772	45.00	0.748	19.00	0.492	12.50	0.197	5.0	500
SUC130A	1	1.969	50.00	0.661	16.80	0.394	10.00	0.213	5.4	350
SUC135A	1	2.165	55.00	0.787	20.00	0.551	14.00	0.256	6.5	250
SUC140A	1	2.480	63.00	0.787	20.00	0.591	15.00	0.256	6.5	230
SUC200A	2	0.748	19.00	0.394	10.00	0.327	8.30	—	—	3000
SUC205A	2	0.866	22.00	0.325	8.25	0.315	8.00	—	—	3500
SUC210A	2	1.181	30.00	0.449	11.40	0.449	11.40	—	—	1500
SUC215A	2	1.378	35.00	0.492	12.50	0.541	13.75	—	—	1000
SUC220A	2	1.575	40.00	0.598	15.20	0.531	13.50	—	—	800

Item No.	Style	A		B		C		Hole Dia.		Pack Qty.
		In	mm	In	mm	In	mm	In	mm	
SUC225A	2	1.772	45.00	0.561	14.25	0.587	14.90	—	—	500
SUC230A	2	1.969	50.00	0.433	11.00	0.610	15.50	—	—	350
SUC235A	2	2.165	55.00	0.787	20.00	0.626	15.90	—	—	250
SUC240A	2	2.480	63.00	0.917	23.30	0.709	18.00	—	—	230
SUC300A	3	0.866	22.00	0.295	7.50	0.287	7.30	—	—	2000
SUC305A	3	1.181	30.00	0.449	11.40	0.449	11.40	—	—	1000
SUC310A	3	1.378	35.00	0.492	12.50	0.541	13.75	—	—	700
SUC315A	3	1.575	40.00	0.551	14.00	0.531	13.50	—	—	500
SUC320A	3	1.654	42.00	0.598	15.20	0.453	11.50	—	—	500
SUC325A	3	1.772	45.00	0.561	14.25	0.587	14.90	—	—	400
SUC330A	3	1.969	50.00	0.689	17.50	0.610	15.50	—	—	300
SUC335A	3	2.165	55.00	0.787	20.00	0.626	15.90	—	—	250
SUC400A	4	0.787	20.00	0.374	9.50	0.374	9.50	—	—	2000
SUC405A	4	1.181	30.00	0.591	15.00	0.512	13.00	—	—	1000