



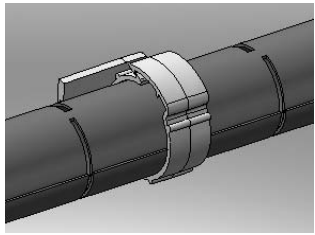
Excellent Integrated System Limited

Stocking Distributor

Click to view price, real time Inventory, Delivery & Lifecycle Information:

[Essentra Components \(formerly Richco, Inc.\)](#)
[SHR-C1](#)

For any questions, you can email us directly:
sales@integrated-circuit.com



TO HOLD SHR-20 & SHR-25 SLIT HARNESS WRAP

RECOMMENDED ORIENTATION OF CLIP WHEN MOUNTED HORIZONTALLY



SHR-C1



SHR-C2/SHR-C3



SHR-C4

REV	MODIFICATION	DATE	DRN
01	SALES DRAWING	31/05/07	I.C
02	ECN07-179	08/10/07	I.C
03	C.O. 2010075	28/02/08	I.C
04	C.O. 2010214	08/05/08	S.F
05	C.O. 2010227	13/05/08	S.F
06	C.O. 2010266	25/06/08	I.C
07	C.O. 2010427	07/10/08	S.F

NOTES:

- PARTS AVAILABLE IN SILVER AND WHITE BY SPECIAL ORDER.

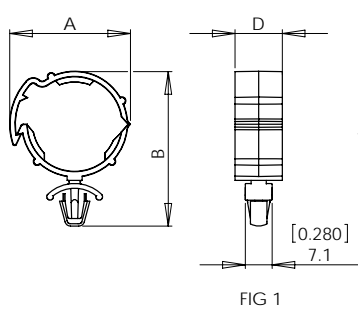


FIG 1

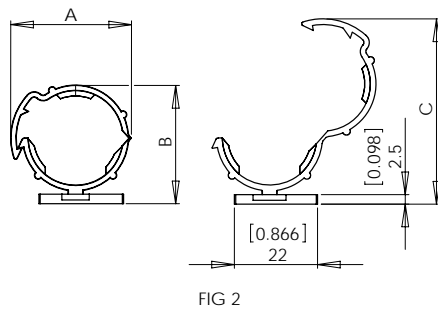


FIG 2

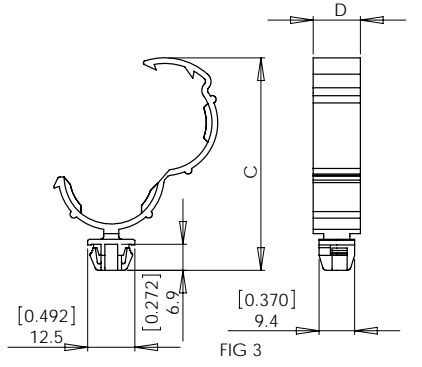


FIG 3

PART No.	A	B	C	D	MOUNTING	COLOUR	FIG
SHR-C1	29 REF [1.14]	42.5 REF [1.67]	58 REF [2.28]	12.5 [0.49]	SNAP LOCK INTO A $\phi 6.4 \pm 0.05$ HOLE [0.252 ± 0.002] PANEL THICKNESS 0.8 - 2mm [0.031 - 0.079]	BLACK	1
SHR-C2	30 REF [1.18]	32.5 REF [1.28]	47 REF [1.85]	12.5 [0.49]	MOUNT WITH #8 OR M4 SCREW	BLACK	2
SHR-C3	30 REF [1.18]	32.5 REF [1.28]	47 REF [1.85]	12.5 [0.49]	0.8 THICK DOUBLE SIDED TAPE (RMS-375)	BLACK	2
SHR-C4	30 REF [1.18]	40.5 REF [1.63]	56 REF [2.21]	12.5 [0.49]	SNAP LOCK INTO A 9.5 ± 0.8 SQUARE HOLE PANEL THICKNESS 0.8 - 2mm [0.031 - 0.079]	BLACK	3

INFORMATION CONTAINED IN THIS DOCUMENT IS CONFIDENTIAL TO RICHCO INTERNATIONAL Co. Ltd. AND MAY NOT BE DISCLOSED OR REPRODUCED IN WHOLE OR PART WITHOUT THEIR WRITTEN CONSENT.

ALL DIMENSIONS ARE IN mm
 GENERAL TOLERANCES ± 0.25
 * 1 DECIMAL PLACE \pm
 * 2 DECIMAL PLACES \pm
 ANGULAR $\pm 1^\circ$

Richco THIRD ANGLE

MATERIAL: NYLON 6/6 UL 94 V-2 (RMS-01)	COLOUR: SEE TABLE
DESCRIPTION: SLIT HARNESS WRAP CLIP	PART No: SEE TABLE
DRG No: 2007-046	NPR No: 2006-199
DRN I.C	DATE 11/06/07
CHKD SF	DATE 27/09/07
SCALE 1:1	SHEET No. 1 OF 1