

Excellent Integrated System Limited

Stocking Distributor

Click to view price, real time Inventory, Delivery & Lifecycle Information:

[Würth Electronics Midcom](#)
[760390012](#)

For any questions, you can email us directly:

sales@integrated-circuit.com

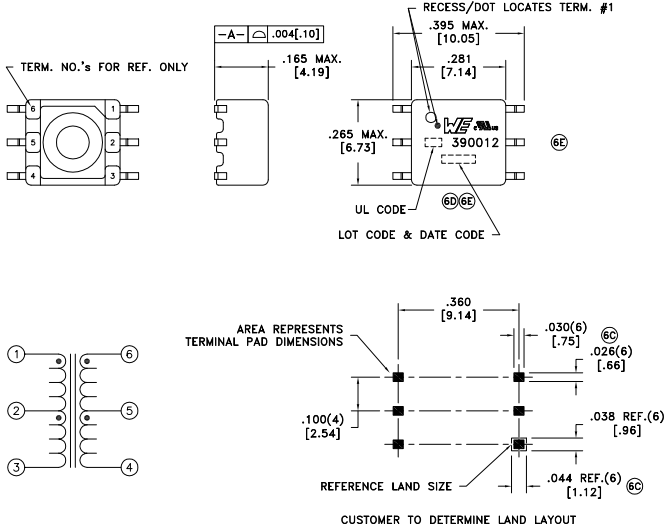
CUSTOMER TERMINAL	RoHS	LEAD(Pb)-FREE
Sn96%, Ag4%	Yes	Yes

Image from you.speck



ELECTRICAL SPECIFICATIONS @ 25°C unless otherwise noted:

PARAMETER	TEST CONDITIONS	VALUE
D.C. RESISTANCE	1-3 @20°C	0.31 ohms max.
D.C. RESISTANCE	6-4 @20°C	0.33 ohms max.
INDUCTANCE	1-3 10kHz, 100mVAC, Ls	475uH min.
DIELECTRIC	1-6 3125VAC, 1 second	2500VAC, 1 minute
TURNS RATIO	(6-4):(1-3)	1.1:1, ±2%



GENERAL SPECIFICATIONS:

(6B) OPERATING TEMPERATURE RANGE: -40°C to +125°C.

CURRENT RATING: 150mAAC

VOLTAGE-TIME: 11VuS

(6B) Designed to comply with the following requirements as defined by IEC60950-1, EN60950-1, UL60950-1/CSA60950-1 and AS/NZS60950.1:
- Functional insulation for a primary circuit at a working voltage of 400Vrms.

(6E) Qualified to AEC-Q200.

Wire insulation & RoHS status not affected by wire color.
Wire insulation color may vary depending on availability.

(6D)

AGENCY NUMBER	
UL CODE FILE# E205930	CH
UL60950-1	E205930
CSA60950-1 (Via CUL)	E205930

REV. DATE Packaging Specifications	<p>CONVENTION PLACEMENT</p> <p>This drawing is dual dimensioned. Dimensions in brackets are in millimeters.</p>	<p>Tolerances unless otherwise specified: Angles: ±1° Decimals: ±.005 [.13] Fractions: ±1/64 Footprint: ±.005 [.13]</p>	DRAWING TITLE	PART NO.
6E 6/16 Method: Tape & Reel			TRANSFORMER	760390012
6D 2/15 PKG-0895				
6C 6/13 www.we-online.com/midcom				
6B 1/13 SEE REVISION SHEET FOR REVISION LEVEL			eiSos p/n: 760390012	<p>SPECIFICATION SHEET 1 OF 1</p>