

Excellent Integrated System Limited

Stocking Distributor

Click to view price, real time Inventory, Delivery & Lifecycle Information:

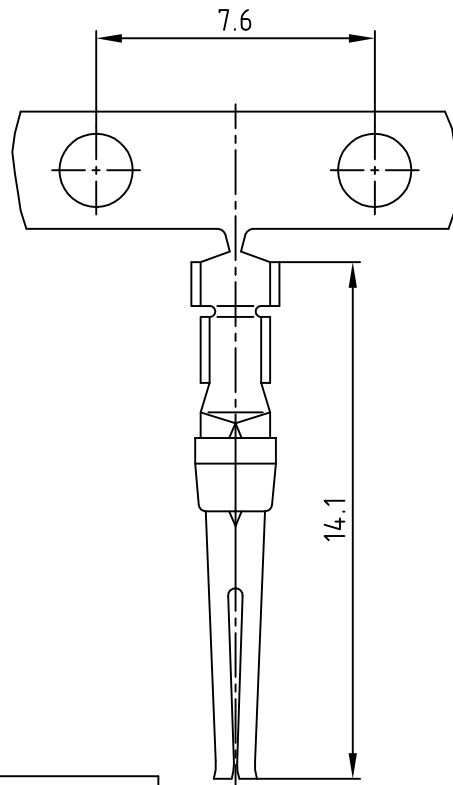
[Conec](#)

[162A11839X](#)

For any questions, you can email us directly:

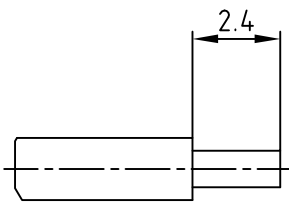
sales@integrated-circuit.com

4 3 2 1 used for: D-SUB



PLATING / CONTACT AREA	PART-NO.
GOLD FLASH over NICKEL	162A11839X
20µin HARD GOLD over min. 50µin NICKEL	162B11839X
30µin HARD GOLD over min. 50µin NICKEL	162C11839X
50µin HARD GOLD over min. 50µin NICKEL	162J11839X

STRIPPING DIMENSIONS



NOTES:

Material: Phosphor Bronze

Finish: See Table

Temperature Range: -55°C to +125°C

Rated Current: 7.5A

Contact Resistance: <= 10m0hm

Length of Reel - small reel wheeled left: 500 contacts

Crimping: Use Crimp Tool 360X10069X

Directive 2002/95/EC RoHS compliant

THIS DRAWING MAY NOT BE COPIED OR REPRODUCED IN ANY WAY, AND MAY NOT BE PASSED ON TO A THIRD PARTY WITHOUT WRITTEN PERMISSION. OWNERSHIP AND COPYRIGHT OF CONEC GmbH DO NOT ALTER CAD DRAWING BY HAND

finish: SEE TABLE		tolerance		dim. in mm	
2014	date	name		title: SOCKET CONTACT CRIMP AWG 24-20 (small reel wheeled left)	
drawn	08.04.	Lehmenkühler			
appd.	08.04.	Fischer			
norm					
d-old				dwg no: AutoCAD 2013	
a	Original			DIN-A 4	
rev.	description	date	name	sh: 1/1	



scale: 5:1	
material: SEE NOTES	
dwg no: AutoCAD 2013	
16K1A3415	
part no: SEE TABLE	