

Excellent Integrated System Limited

Stocking Distributor

Click to view price, real time Inventory, Delivery & Lifecycle Information:

[Cinch Connectivity Solutions](#)
[CP1094-U](#)

For any questions, you can email us directly:
sales@integrated-circuit.com

D



Description: BNC,Front Mount Bulkhead Jack, BeCu Contact
 Part No: CP1094U
 Application: PCB
 Crimp Tool: N/A
 Impedance: 50 Ohms
 Frequency Range: 0-4 GHz
 Material: Body Brass Nickel plated
 Contact Becu Gold plated
 Insulotor Teflon
 Nut Brass Nickel plated
 Lock Washer S50C Nickel plated

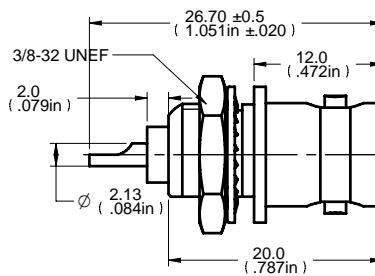
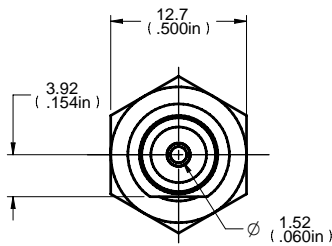
RoHS Compliance: Yes

Technical Detail: Refer to Emerson Document P/N 27-0000

DRAWING NO. CP1094U-CUST	
REVISIONS	
01	OFFICIAL RELEASE
02	RELEASE FOR SUPPLIER ALTER
03	LOCK WASHER MATERIAL WAS BRASS ADD MORE DIMENSIONS
04	3/8-32UNEF WAS 3/8-32UNEF-2A

D

C

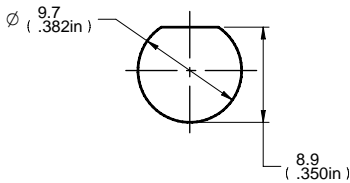


C

B

B

RECOMMENDED MOUNTING HOLE DIMENSIONS



DIM OUTLINE

TOLERANCE UNLESS OTHERWISE SPECIFIED	DRAWN BY YUGE HU	DATE 07-27-11
DECIMALS	CHECKED BY YUGE HU	DATE 07-27-11
X	APPROVED BY LIN MA	DATE 07-27-11
X.X		
X.XX		
ANGLES	U/M	mm

EMERSON Network Power		Connectivity Solutions	
TITLE BNC,FRONT MOUNT BULKHEAD JACK, BECU CONTACT			
SHEET 1 OF 1	DRAWING NO. CP1094U-CUST	SIZE A	

THIS DRAWING WAS PRODUCED BY COMPUTER, DO NOT SCALE DRAWING OR UPDATE MANUALLY.

CUSTOMER COPY

A