

Excellent Integrated System Limited

Stocking Distributor

Click to view price, real time Inventory, Delivery & Lifecycle Information:

[Cinch Connectivity Solutions](#)
[29-4010](#)

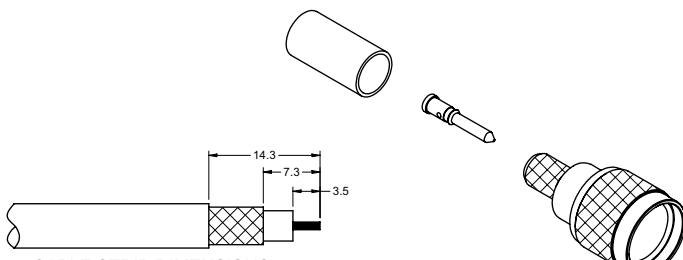
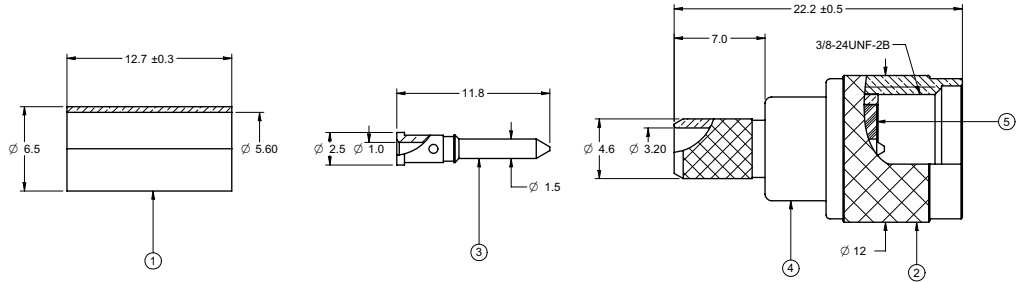
For any questions, you can email us directly:

sales@integrated-circuit.com

ITEM ①	ITEM ②	ITEM ③	ITEM ④	ITEM ⑤
SLEEVE	NUT	CONTACT	BODY	INSULATOR
29-4010	BRASS NICKEL PLATED	BRASS NICKEL PLATED	BRASS GOLD PLATED	BRASS NICKEL PLATED
				DELTRIN WHITE

受控 CONTROLLED DOCUMENT				
编号 P/N	29-4010	版本 Rev	0A	日期 Rel'd Date
				Mar 24.08

DRAWING NO.		29-4010	
REVISIONS			
RELEASE FOR QUOTATION			
11-09-07	ZW		



CABLE STRIP DIMENSIONS
ASSEMBLY INSTRUCTIONS ON SHEET 2

NOTES:

- ELECTRICAL SPECIFICATIONS
IMPEDANCE: NON-CONSTANT
FREQUENCY RANGE: 0-2 GHz
WORKING VOLTAGE: 500 Vrms MAX AT SEA LEVEL
DIELECTRIC WITHSTANDING VOLTAGE: 1500 Vrms AT SEA LEVEL
INSULATION RESISTANCE: 5000 MEGOHMS MINIMUM
- MECHANICAL SPECIFICATIONS
DURABILITY: 500 CYCLES MIN
CABLE ACCEPTABILITY: RG58
THE MATERIAL OF CRIMP SLEEVE SHALL HAVE A MAXIMUM HARDNESS OF 85 VICKERS.
CABLE RETENTION: 20 lbs MIN
- ENVIRONMENTAL SPECIFICATIONS
RECOMMENDED TEMPERATURE RANGE: -55 °C TO +85 °C
- PRODUCT SHOULD BE RoHS COMPLIANCE.
- PACKAGING REQUIREMENT FOLLOWS ENGINEER DOCUMENT P/N 836-40200001XX

THIS DRAWING TO BE INTERPRETED PER ANS Y 14.5M - 1994

COMPANY CONFIDENTIAL

TOLERANCE UNLESS OTHERWISE SPECIFIED	DRAWN BY GARY ZHG	DATE 11-09-07
DECIMALS	CHECKED BY LINDA WU	DATE 11-09-07
X ± 0.5	APPROVED BY	DATE
XX ± 0.2		
XXX ± 0.1		
ANGLES ± 0.5°	U/M	mm

TITLE	
MINI UHF 3 PC CRIMP *	
SHEET 1 OF 2	DRAWING NO. 29-4010
	SIZE C

5

4

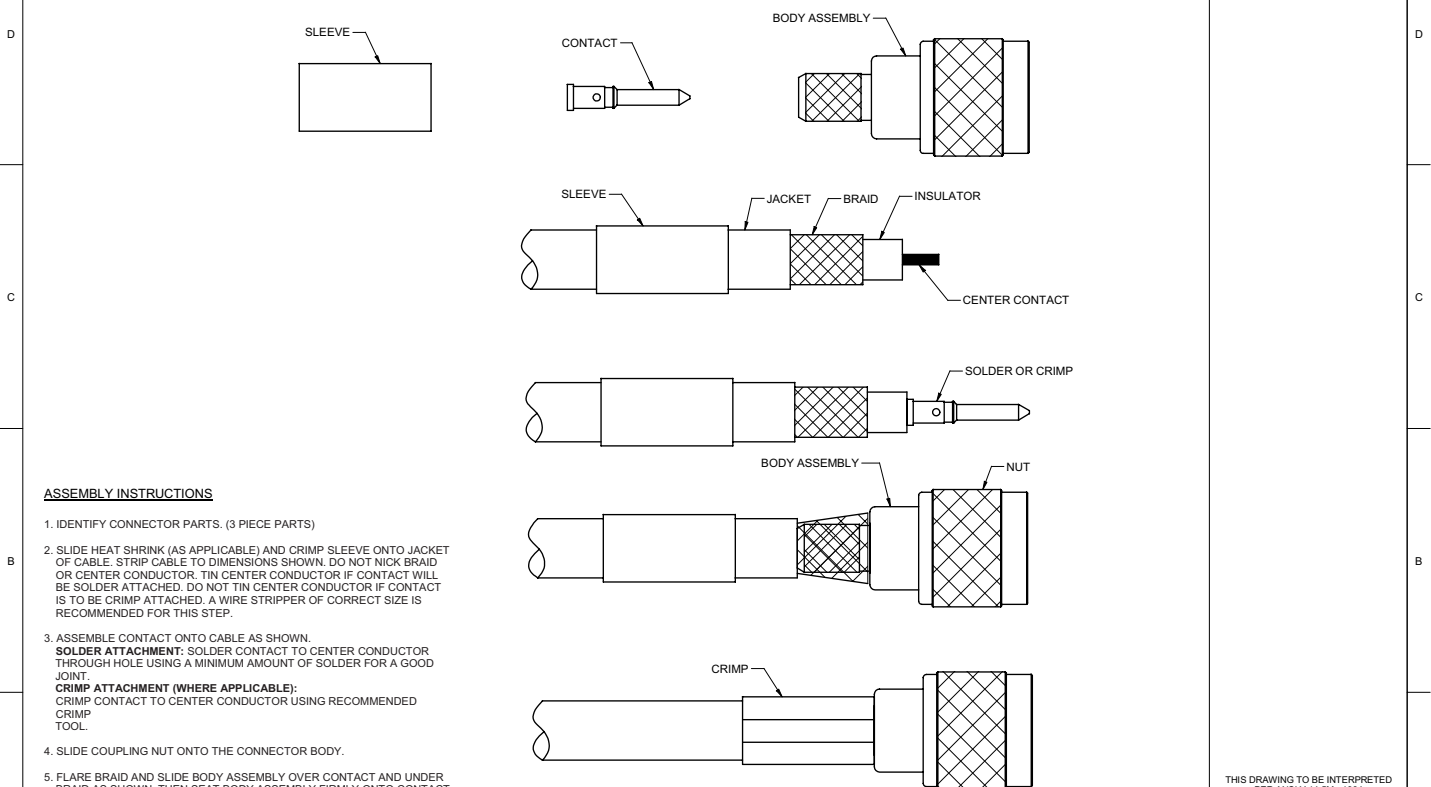
3

2

1

PART NUMBER	CABLE TYPE	CONTACT I.D.	BODY I.D.	FERRULE I.D.	CRIMP (BRAID HEX)	CONTACT CRIMP HEX	RECOMMENDED CRIMP TOOL
29-4010	RG-58	1.0	3.20	5.6	5.41 (.213")	1.70 (.067")	24-9958P

DRAWING NO. 29-4010	
REVISIONS	
RELEASE FOR QUOTATION	
A	11-09-07 ZW



ASSEMBLY INSTRUCTIONS

1. IDENTIFY CONNECTOR PARTS. (3 PIECE PARTS)
2. SLIDE HEAT SHRINK (AS APPLICABLE) AND CRIMP SLEEVE ONTO JACKET OF CABLE. STRIP CABLE TO DIMENSIONS SHOWN. DO NOT NICK BRAID OR CENTER CONDUCTOR. TIN CENTER CONDUCTOR IF CONTACT WILL BE SOLDER ATTACHED. DO NOT TIN CENTER CONDUCTOR IF CONTACT IS TO BE CRIMP ATTACHED. A WIRE STRIPPER OF CORRECT SIZE IS RECOMMENDED FOR THIS STEP.
3. ASSEMBLE CONTACT ONTO CABLE AS SHOWN.
SOLDER ATTACHMENT: SOLDER CONTACT TO CENTER CONDUCTOR THROUGH HOLE USING A MINIMUM AMOUNT OF SOLDER FOR A GOOD JOINT.
CRIMP ATTACHMENT (WHERE APPLICABLE): CRIMP CONTACT TO CENTER CONDUCTOR USING RECOMMENDED CRIMP TOOL.
4. SLIDE COUPLING NUT ONTO THE CONNECTOR BODY.
5. FLARE BRAID AND SLIDE BODY ASSEMBLY OVER CONTACT AND UNDER BRAID AS SHOWN. THEN SEAT BODY ASSEMBLY FIRMLY ONTO CONTACT UNTIL A GENTLE SNAP IS FELT INDICATING THE CONTACT IS IN PLACE. THE CABLE MAY HAVE TO BE HELD IN A CLAMPING FIXTURE. ARRANGE BRAID UNIFORMLY AROUND CRIMP STEM. SLIDE CRIMP SLEEVE FORWARD AND CRIMP USING RECOMMENDED CRIMP TOOL. SLIDE HEAT SHRINK FORWARD AND SHRINK (AS APPLICABLE).

THIS DRAWING TO BE INTERPRETED PER ANS Y 14.5M - 1994
COMPANY CONFIDENTIAL



TITLE
 MINI UHF 3 PC CRIMP *

TOLERANCE UNLESS OTHERWISE SPECIFIED	DRAWN BY GARY ZHG	DATE 11-09-07
DECIMALS	CHECKED BY LINDA WU	DATE 11-09-07
X	APPROVED BY	DATE
XX		
XXX		
ANGLES	U/M	mm

THIS DRAWING WAS PRODUCED BY COMPUTER, DO NOT SCALE DRAWING OR UPDATE MANUALLY.

SHEET 2 OF 2	DRAWING NO. 29-4010	SIZE C
-----------------	------------------------	-----------

受控 CONTROLLED DOCUMENT					
编号 P/N	29-4010	版本 Rev	0A	日期 Rel'd Date	Mar 24.08