

## Excellent Integrated System Limited

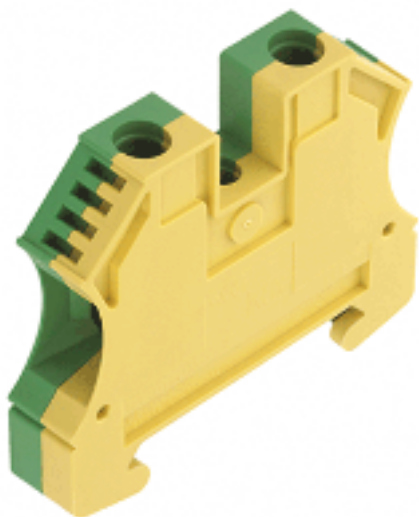
Stocking Distributor

Click to view price, real time Inventory, Delivery & Lifecycle Information:

[Weidmüller](#)  
[1010300000](#)

For any questions, you can email us directly:

[sales@integrated-circuit.com](mailto:sales@integrated-circuit.com)



#### General ordering data

|                  |   |
|------------------|---|
| Order No.        | 1010300000  |
| Part designation | WPE 10  |
| Version          | Earth terminal, 10 mm <sup>2</sup> , Screw connection, Wemid, green/yellow, TS 35 |
| EAN              | 4008190031251   |
| Qty.             | 50 pc(s).   |

#### Product notes

|                      |   |
|----------------------|---|
| Note, technical data | AWG 6/7 and H07V-R16 tighten with 2.4 Nm.   |
| Product description  | Their small size compared to the respective rated cross-section makes the modular terminals with the compact design very popular. |
| Note, accessories    | Rail support for insulated installation of terminal rail "SH 2" order no. 0494920000 (10 pcs)                                     |

#### PT OKIECEEx/ATEX rating data

|                                      |   |
|--------------------------------------|---|
| EU-type examination certificate      | KEMA98ATEX1683U   |
| Download, German                     | KEMA98ATEX1683U_d.pdf   |
| Download English                     | KEMA98ATEX1683U_e.pdf   |
| IECEX Certificate of Conformity      | IECEXULD05.0008U  |
| Download                             | IECEXULD05.0008U_e.pdf  |
| ATEX conductor cross-section         | 10 mm <sup>2</sup>  |
| IECEX conductor cross-section        | 10 mm <sup>2</sup>  |
| Voltage when using cross-connections | CrossConnectionGuide.pdf  |
| Operating temperature range          | For operating temperature range see EC Design Test Certificate / IEC Ex-Certificate of Conformity |
| Marking EN 60079-7                   | Ex e II   |
| Marking ATEX Directive 94/9/EC       | Ex II 2 G D   |

#### Additional technical data

|                                 |              |
|---------------------------------|--------------|
| Colour of insulating material   | green/yellow |
| Connection direction            | on side      |
| End plate required              | No           |
| Explosion-tested version "Ex e" | Yes          |

#### Additional technical data

|  |                   |
|--|-------------------|
| Installation advice                              | TS 35             |
| Insulating material                              | Wemid             |
| Levels cross-connected internally                | No                |
| No. of identical terminals                       | 1                 |
| No. of levels                                    | 1                 |
| No. of terminal strips per level                 | 2                 |
| Open sides                                       | closed            |
| Operating temperature range                      | - 50 °C, + 120 °C |
| Product family                                   | W-Series          |
| Type of connection                               | Screwed           |
| Type of mounting                                 | Screwed           |
| UL 94 flammability rating of insulation material | V-0               |
| Version  | PE terminal       |

#### CSA rating data

|                          |        |
|--------------------------|--------|
| Min. cross-section (CSA) | AWG 16 |
| Max. cross-section (CSA) | AWG 6  |

#### Conductors for clamping (rated connection)

|  |                      |
|--|----------------------|
| Clamping range, min.   | 1.31 mm <sup>2</sup> |
| Clamping range, max.   | 16 mm <sup>2</sup>   |
| Type of connection   | Screw connection     |
| 2nd type of connection                                       | screwed              |
| Connection direction   | on side              |
| No. of connections   | 2                    |
| Stripping length   | 12 mm                |
| Clamping screw   | M 4                  |
| Blade size   | 0.6 x 3.5 mm         |
| Tightening torque range                                      | 1.2...2.4 Nm         |
| Gauge to IEC 60947-1   | B6                   |
| Solid, min.  | 1.5 mm <sup>2</sup>  |
| Solid, max.  | 16 mm <sup>2</sup>   |
| Stranded, min.   | 1.5 mm <sup>2</sup>  |
| Stranded, max.   | 16 mm <sup>2</sup>   |
| Flexible, min.   | 1.5 mm <sup>2</sup>  |
| Flexible, max.   | 16 mm <sup>2</sup>   |
| Flexible with ferrule, min. (DIN 46228/1)                    | 1.5 mm <sup>2</sup>  |
| Flexible with ferrule, max. (DIN 46228/1)                    | 16 mm <sup>2</sup>   |
| Flexible, min., ferrule with plastic collar (DIN 46228 pt 4) | 1.5 mm <sup>2</sup>  |
| Flexible, max., ferrule with plastic collar (DIN 46228 pt 4) | 16 mm <sup>2</sup>   |
| AWG conductor size, min.                                     | AWG 16               |
| AWG conductor size, max.                                     | AWG 8                |
| AWG conductor size, min.                                     | 1.31 mm <sup>2</sup> |
| AWG conductor size, max.                                     | 16 mm <sup>2</sup>   |

#### Dimensions

|                          |        |
|--------------------------|--------|
| Width                    | 9.9 mm |
| Height of lowest version | 47 mm  |
| Length                   | 60 mm  |

#### Dimensions

TS 35 offset 32 mm

#### PE rating data

|  |                              |
|--|------------------------------|
| Centre screw on PE terminals                         | M 3                          |
| PEN function   | No                           |
| Pollution severity                                   | 3                            |
| Rated cross-section                                  | 10 mm <sup>2</sup>           |
| Rated impulse withstand voltage to adjacent terminal | 8 kV                         |
| Rated short-time current                             | 1200 A (10 mm <sup>2</sup> ) |
| Rated voltage for adjacent terminal                  | 1,000 V                      |
| Standards  | IEC 60947-7-2                |
| Tightening torque range for fixing screw             | 0.5...1.0 Nm                 |

#### UL rating data

|                         |        |
|-------------------------|--------|
| Min. cross-section (UL) | AWG 16 |
| Max. cross-section (UL) | AWG 6  |

#### Approvals

Approvals institutes



#### Downloads

STEP 1010300000\_09236\_WPE\_10\_STP.stp

#### Classifications

|            |             |
|------------|-------------|
| eClass 4.1 | 27-14-03-05 |
| eClass 5.0 | 27-14-03-05 |
| eClass 5.1 | 27-14-03-05 |

#### Similar products

| Order No.  | Part designation | Version  |
|------------|------------------|--|
| 1016500000 | WPE 1.5/ZZ       | Earth terminal, 1.5 mm <sup>2</sup> , Screw connection, Wemid, green/yellow, TS 35 |

|            |                |  |
|------------|----------------|--|
| 1036300000 | WDK 2.5PE      | Earth terminal, 2.5 mm <sup>2</sup> , Screw connection, Wemid, green, TS 35        |
| 1010000000 | WPE 2.5        | Earth terminal, 2.5 mm <sup>2</sup> , Screw connection, Wemid, green/yellow, TS 35 |
| 1016400000 | WPE 2.5/1.5/ZR | Earth terminal, 2.5 mm <sup>2</sup> , Screw connection, Wemid, green/yellow, TS 35 |
| 1010100000 | WPE 4          | Earth terminal, 4 mm <sup>2</sup> , Screw connection, Wemid, green/yellow, TS 35   |
| 1905130000 | WPE 4/ZZ       | Earth terminal, 4 mm <sup>2</sup> , Screw connection, Wemid, green/yellow, TS 35   |
| 1905120000 | WPE 4/ZR       | Earth terminal, 4 mm <sup>2</sup> , Screw connection, Wemid, green/yellow, TS 35   |
| 1010200000 | WPE 6          | Earth terminal, 6 mm <sup>2</sup> , Screw connection, Wemid, green/yellow, TS 35   |
| 1042500000 | WPE 10/ZR      | Earth terminal, 10 mm <sup>2</sup> , Screw connection, Wemid, green/yellow, TS 35  |
| 1010400000 | WPE 16         | Earth terminal, 16 mm <sup>2</sup> , Screw connection, Wemid, green/yellow, TS 35  |
| 1010500000 | WPE 35         | Earth terminal, 35 mm <sup>2</sup> , Screw connection, Wemid, green/yellow, TS 35  |
| 1037300000 | WPE 70/95      | Earth terminal, 95 mm <sup>2</sup> , Screw connection, Wemid, green/yellow, TS 35  |
| 1019700000 | WPE 120/150    | Earth terminal, 120 mm <sup>2</sup> , Screw connection, Wemid, green/yellow, TS 35 |