

Excellent Integrated System Limited

Stocking Distributor

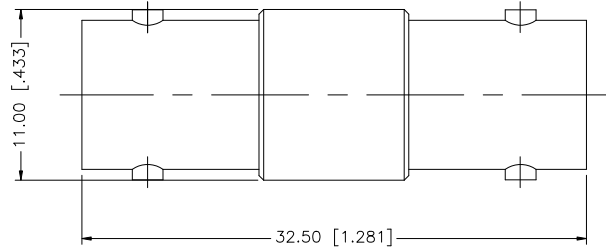
Click to view price, real time Inventory, Delivery & Lifecycle Information:

[Amphenol RF](#)
[112446T](#)

For any questions, you can email us directly:

sales@integrated-circuit.com

REV.	DATE	ECR NO.	DESCRIPTION
NC	03/12/09	-	INITIAL RELEASE



8				<small>UNLESS OTHERWISE SPECIFIED DIMENSIONS ARE IN MILLIMETERS. DIMENSIONS IN [] ARE IN INCHES AND FOR CUSTOMER REFERENCE ONLY.</small> <small>UNLESS OTHERWISE SPECIFIED TOLERANCES FOR MILLIMETERS ARE:</small> 0.5 - 8mm ± 0.20mm 8 - 30mm ± 0.40mm 30 - 120mm ± 0.50mm <small>UNLESS OTHERWISE SPECIFIED TOLERANCES FOR INCHES ARE:</small> .020 - .315 = ± 0.007" .315 - 1.180 = ± 0.015" 1.180 - 4.724 = ± 0.020" DO NOT SCALE DRAWING	APPROVALS	DATE	<h2 style="color: blue; text-align: center;">Amphenol Connex</h2> <p style="text-align: center;">BNC FEMALE TO FEMALE ADAPTER 75ohm</p>	
7					DRAWN	GRS		03/12/09
6					CHECKED			
5					ISSUED			
4					SHEET	1 OF 1		
3	CONTACT PIN	PHOS. BRONZE	GOLD		1			
2	INSULATOR	PTFE	NATURAL		1			
1	BODY	BRASS	NICKEL		1			
	DESCRIPTION	MATERIAL	FINISH	QTY	CAD FILE	C:/112/112446T.DWG	PART NO. 112446T DWG. NO. 112446T.DWG REV. NC SIZE A SCALE NA	