

Excellent Integrated System Limited

Stocking Distributor

Click to view price, real time Inventory, Delivery & Lifecycle Information:

[Hammond Manufacturing](#)
[166J25C](#)

For any questions, you can email us directly:

sales@integrated-circuit.com

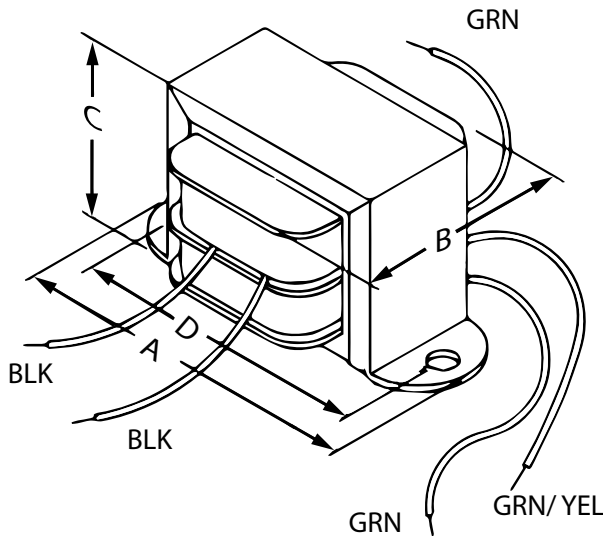


www.hammondmfg.com

166J25C

Power Transformer - Low Voltage/ Filament
Economical Single Primary - Open Style Chassis Mount

Features



- Economical single primary 115 VAC, 60 Hz. (or 117 50/60 Hz. see table below)
- Open style, channel bracket, chassis mount.
- Minimum 6" long leads.
- Dual bobbin design - no electrostatic shield required.
- Class B insulation (130 degrees, C) for extra protection - **UL listed** as a Class A (105 degree, C) design
- Hi-Pot test of 2,000V RMS.
- **CSA certified.**

Overall Dimensions (in. / mm)	
A	3.25 / 82.6
B	2 / 50.8
C	2 / 50.8
Hole to Hole Mounting Dims	
D	2.38 / 60.5
E	/
Mounting Hole Sizes	
Width-wise	0.187 / 4.7
Depth-wise	/
Electrical	
Size (VA)	25
Primary	117V 50/60 Hz.
Secondary VAC	25
Secondary Amps	1

