



Distributor of CTS Electronic Components: Excellent Integrated System Limited

Datasheet of 4100-063LF - FILTER EMI 1500 PF PI TYPE

Contact us: [sales@integrated-circuit.com](mailto:sales@integrated-circuit.com) Website: [www.integrated-circuit.com](http://www.integrated-circuit.com)

---

## Excellent Integrated System Limited

Stocking Distributor

Click to view price, real time Inventory, Delivery & Lifecycle Information:

[CTS Electronic Components](#)

[4100-063LF](#)

For any questions, you can email us directly:

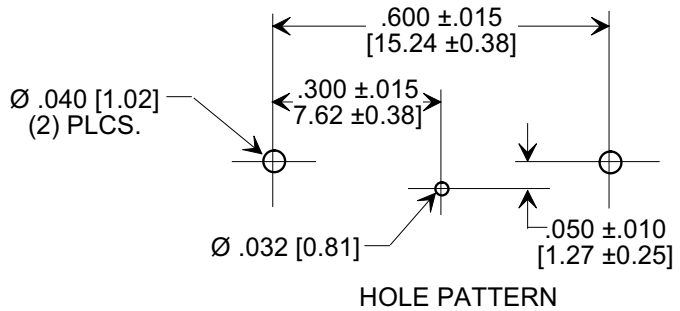
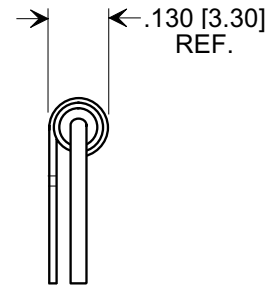
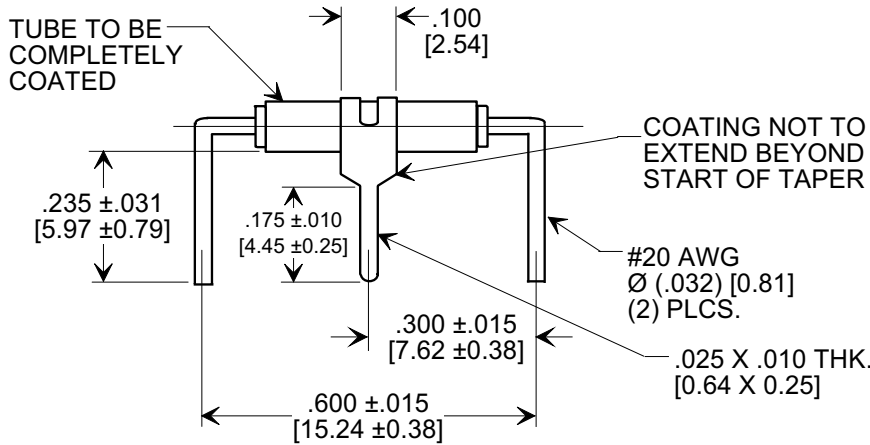
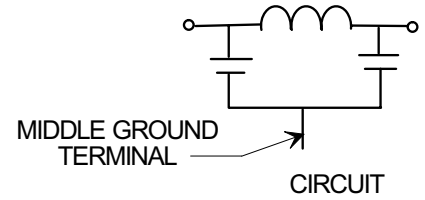
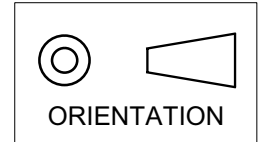
[sales@integrated-circuit.com](mailto:sales@integrated-circuit.com)

**MARKETING SALES DRAWING**

**DIMENSIONS IN INCHES - DO NOT SCALE THIS DRAWING**  
**DIMENSIONS IN METRIC - [ ]**

This drawing is the property of Tusonix, Inc., and may not be used, reproduced, published or disclosed to others without expressed authorization by Tusonix Inc.

**Electrical Testing per Tusonix standard test plans and Mil-Std-202 Test Methods.**



**NOTES:**

- TUSONIX STANDARD PART NUMBER: 4100-063.  
 TUSONIX RoHS COMPLIANT PART NUMBER: 4100-063 LF.  
 CUSTOMER MUST SPECIFY STANDARD OR RoHS PART NUMBER WHEN ORDERING.
- LEAD FINISH: SILVER PLATED.
- PART MARKING: STANDARD PART: NO MARKING. RoHS PART: GREEN INK DOT ON INSULATION BAND.

CAP. 1 KHz @ 25°C	WORKING VOLTAGE	I.R. MIN. @ 100 (VDC)	DWV (VDC)	DC CURRENT (AMPS)	MINIMUM NO LOAD INSERTION LOSS (dB) AT 25°C PER MIL-STD -220			
					10 MHz	100 MHz	400 MHz	1 GHz
1500 pF MIN.	380 VDC TO 85°C	10 G Ω	900	10A	3	35	56	65

X-2015 Rev-0	REVISION RECORD	Title	
	Original Release C.O. 940822-1	P.C. BOARD MOUNT π TYPE LOW PASS FILTER	
	ADDED LEAD COATING NOTE & NO. WAS -062. S.M. 08-31-94	Drawn S.M. 08-17-94	Scale 3X
	ADDED NOTES, METRIC & DWV. S.M. 02-10-06	Approved BM 08-17-94	
940830-2	20060109-5-07	A 4100-063	
<b>TUSONIX</b> TUCSON, ARIZONA			