

## Excellent Integrated System Limited

Stocking Distributor

Click to view price, real time Inventory, Delivery & Lifecycle Information:

[Molex Connector Corporation](#)  
[0731010401](#)

For any questions, you can email us directly:

[sales@integrated-circuit.com](mailto:sales@integrated-circuit.com)

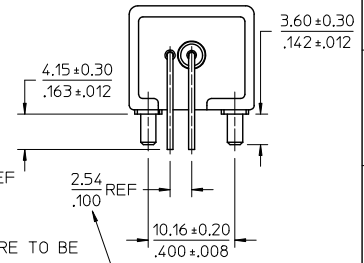
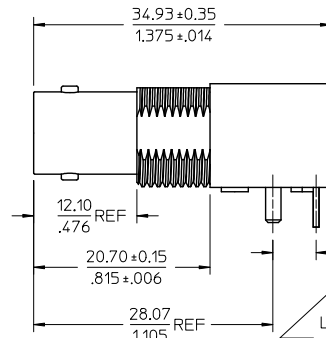
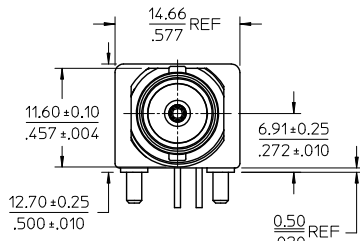
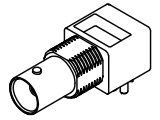
MATERIALS AND FINISHES

- BODY ZINC ALLOY  
PLATED NICKEL
- CENTER CONTACT PHOSPHOR BRONZE  
PLATED GOLD
- INSULATOR POLYPROPYLENE (94-V0)
- MOUNTING POST PHOSPHOR BRONZE  
PLATED TIN
- SOLDER TAIL COPPER OVER STEEL  
PLATED TIN
- JAM NUT BRASS  
PLATED NICKEL
- LOCK WASHER PHOSPHOR BRONZE  
PLATED NICKEL

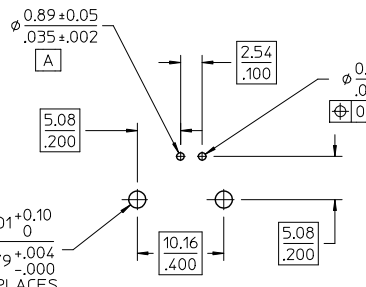
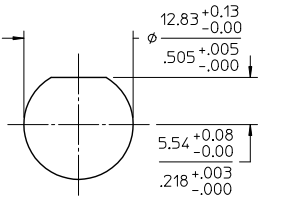
BNC JACK  
75 OHM  
INTERFACE

1/2-28 UNEF-2A

TOP VIEW

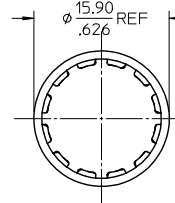
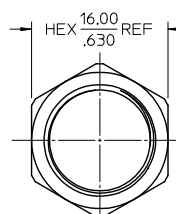


LEADS ARE TO BE ADJUSTED TO FIT PCB PATTERN



RECOMMENDED MOUNTING HOLE  
PANEL THICKNESS: 5.50 (.216) MAX  
RECOMMENDED MOUNTING TORQUE:  
1.36 N-m (12 INCH LBS) MAX

RECOMMENDED PCB HOLE CONFIGURATION



PS-89675-1030	PRODUCT SPECIFICATION
SPECIFICATION	DESCRIPTION

73171-4340	QTY (1) OF 73101-0400 IN SINGLE BAG WITH LABEL
73101-0401	WITH JAM NUT AND WASHER; PACKAGING BY TRAY
73101-0400	WITHOUT JAM NUT AND WASHER; PACKAGING BY TRAY
PART NO.	DESCRIPTION

CHG: PCB LAYOUT PLR: RP15-E391 EC NO: URF-2016-0379 CHKD: DRW/ME/02 APPR: Y/CHENG A5	QUALITY SYMBOLS ▽=0 ▽=0 ▽=0	GENERAL TOLERANCES (UNLESS SPECIFIED)	DIMENSION STYLE	SCALE	DESIGN UNITS	THIRD ANGLE PROJECTION
		mm	MM/IN	METRIC		
		4 PLACES ±	DATE	TITLE		
		3 PLACES ±	DATE	BNC JACK,R/A PCB,75 OHMS DIE CAST, RECEPTACLE BNC-J/RA/PCB		
2 PLACES ±	DATE	molex				
1 PLACE ±	DATE	SD-73101-040				
0 PLACE ±	DATE	SHEET NO. 1 OF 1				
DRAFT WHERE APPLICABLE MUST REMAIN WITHIN DIMENSIONS		ANGULAR ±	MATERIAL NO.	DOCUMENT NO.	THIS DRAWING CONTAINS INFORMATION THAT IS PROPRIETARY TO MOLEX INCORPORATED AND SHOULD NOT BE USED WITHOUT WRITTEN PERMISSION	
		SIZE	SEE TABLE			