

## Excellent Integrated System Limited

Stocking Distributor

Click to view price, real time Inventory, Delivery & Lifecycle Information:

[Molex Connector Corporation](#)  
[0733910680](#)

For any questions, you can email us directly:

[sales@integrated-circuit.com](mailto:sales@integrated-circuit.com)

MATERIALS AND FINISHES

BODY OUTER: BRASS  
PLATED SEE TABLE

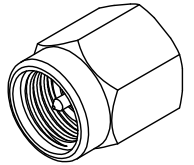
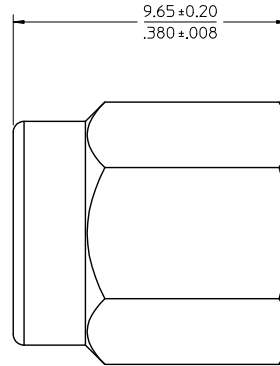
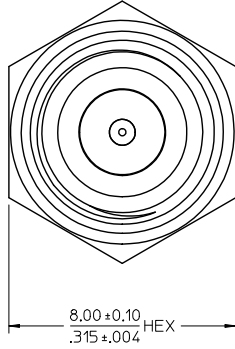
BODY INNER: BRASS  
PLATED SEE TABLE

CONTACT: BRASS  
PLATED SEE TABLE

INSULATOR: TEFLON

RESISTOR: 2 100 OHM ±1% CHIP RESISTORS

ELECTRICAL PERFORMANCE:  
VSWR ≤ 1.20 THRU 6 GHz  
VSWR ≤ 1.30 THRU 12 GHz  
VSWR ≤ 1.35 THRU 18 GHz



MIL-STD-348A, FIG. 310.1	INTERFACE
SPECIFICATION	DESCRIPTION

73391-0682	GOLD (10μ IN MIN)	GOLD (10μ IN MIN)	GOLD (30μ IN MIN)	-----
73391-0681	GOLD (FLASH)	GOLD (10μ IN MIN)	GOLD (10μ IN MIN)	73251-3490
73391-0680	NICKEL (100 μ IN)	GOLD (FLASH)	GOLD (10μ IN MIN)	73251-3491
PART NO.	OUTER BODY	BODY INNER	CONTACT	SAME AS
	FINISH	FINISH	FINISH	

CHG: ADD TOLERANCES	EC NO: URF203-0242	2017/10/23	QUALITY SYMBOLS ▽=0 ▽=0	GENERAL TOLERANCES (UNLESS SPECIFIED)	DIMENSION STYLE		SCALE	DESIGN UNITS	THIRD ANGLE PROJECTION
	DRW: JWIENER	2017/10/23			MM/IN				
	CHK: KROSS				4 PLACES ± --- ± ---	DRAWN BY			SMA PLUG TERMINATION SMA-P, EWR-3728
	APP: JWIENER	2017/10/23			3 PLACES ± --- ± ---	CHECKED BY			
	REV				2 PLACES ± --- ± ---	DATE			
					1 PLACE ± --- ± ---	APPROVED BY			MOLEX INCORPORATED
					ANGULAR ± 2 °	DATE			
					DRAFT WHERE APPLICABLE MUST REMAIN WITHIN DIMENSIONS	MATERIAL NO.			SD-73391-068
						SEE TABLE			
						SIZE			SHEET NO. 1 OF 1
						THIS DRAWING CONTAINS INFORMATION THAT IS PROPRIETARY TO MOLEX INCORPORATED AND SHOULD NOT BE USED WITHOUT WRITTEN PERMISSION			