

Excellent Integrated System Limited

Stocking Distributor

Click to view price, real time Inventory, Delivery & Lifecycle Information:

[Molex Connector Corporation](#)
[0897611670](#)

For any questions, you can email us directly:

sales@integrated-circuit.com

MATERIALS AND FINISHES:

SMA JACK
BODY, FERRULE: BRASS
PLATED: SEE TABLE

CENTER CONTACT: BERYLLIUM COPPER
PLATED GOLD

INSULATOR: TEFLON

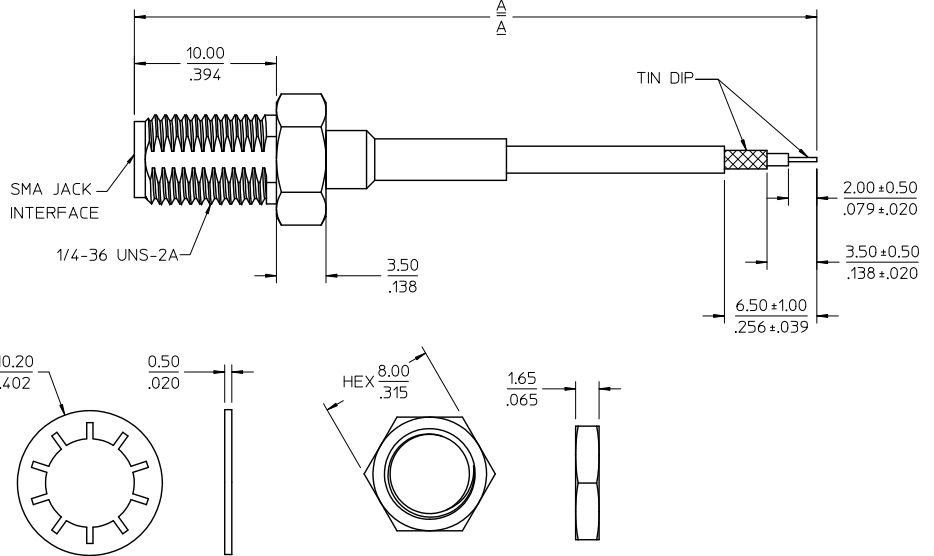
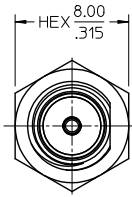
JAM NUT: BRASS
PLATED: SEE TABLE

LOCKWASHER: SPCC OR EQUIVALENT
PLATED: SEE TABLE

CABLE:
RG178 CABLE OR EQUIVALENT

SHRINK TUBE: VERSAFIT OR EQUIVALENT
BLACK COLOR

PACKAGING: BY POLYBAG



89761-1674	7.087±.197	180.00±5.00	GOLD
89761-1673	5.00±.197	127.00±5.00	GOLD
89761-1672	5.512±.197	140.00±5.00	GOLD
89761-1671	5.00±.197	127.00±5.00	NICKEL
89761-1670	5.00±.197	127.00±5.00	GOLD
PART NO.	IN	MM	PLATING

MIL-STD-348A, FIG. 310.2	SMA INTERFACE
SPECIFICATION	DESCRIPTION

CHG: UPDATED MATERIAL FOR LOCK WASHER PER RF12-E045
EC NO: URF2012-0484
DRAWN BY: CHW: 2012/02/10
CHKD: 2012/03/02
APPR: HUANG

QUALITY SYMBOLS
▽=0
▽=0

GENERAL TOLERANCES (UNLESS SPECIFIED)
mm INCH
4 PLACES ± --- ± ---
3 PLACES ± --- ± ---
2 PLACES ± 0.13 ± ---
1 PLACE ± 0.25 ± ---
ANGULAR ± 2 °
DRAFT WHERE APPLICABLE MUST REMAIN WITHIN DIMENSIONS

DIMENSION STYLE
MM/IN
DRAWN BY: JOYCE
CHECKED BY: KERRIE
APPROVED BY: MISEN
DATE: 2005/12/29
DATE: 2005/12/29
DATE: 2005/12/29

SCALE
DESIGN UNITS
METRIC
THIRD ANGLE PROJECTION
TITLE
CA SMA JACK STR BKHD TO STRIP W/RG178 CABLE CA-SMAJ/STRIP
MOLEX INCORPORATED
MATERIAL NO.
DOCUMENT NO.
SD-89761-167
SHEET NO.
1 OF 1