

## Excellent Integrated System Limited

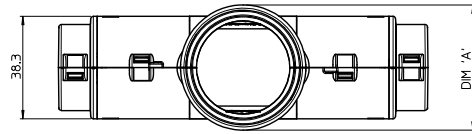
Stocking Distributor

Click to view price, real time Inventory, Delivery & Lifecycle Information:

[Molex Connector Corporation](#)  
[0932860020](#)

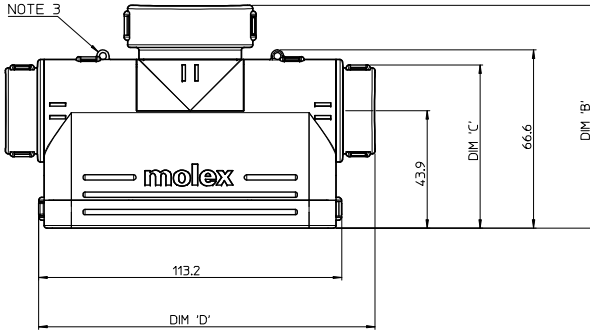
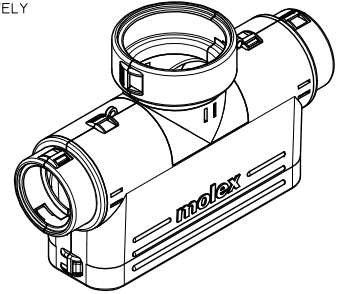
For any questions, you can email us directly:

[sales@integrated-circuit.com](mailto:sales@integrated-circuit.com)



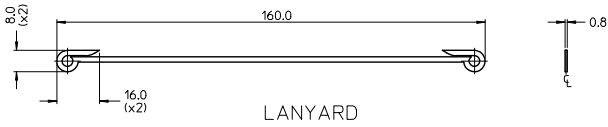
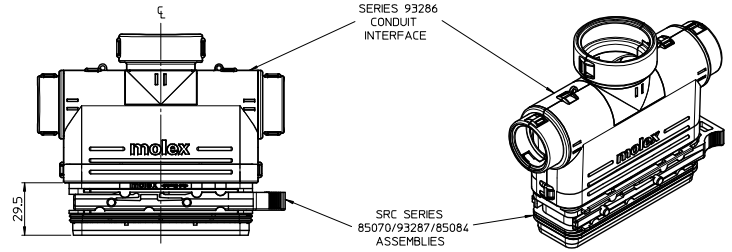
**NOTES:**

1. MATERIAL (CONDUIT INTERFACE AND LANYARD): POLYAMIDE, UNFILLED, COLOUR: BLACK
2. PACKAGING SPECIFICATION: PK-93286-001  
PART NUMBERS LISTED ON SHEET 2 COMPRISE OF TWO SEPARATE MATING PARTS, UNCLIPPED AND CONNECTED AS ONE UNIT WITH A LANYARD
3. FEATURE FOR LANYARD CONNECTION
4. MATES WITH: NC & NW FORMAT CONDUIT  
MOLEX SERIES 85070, 93287, 85084; REFERENCE SALES DRAWINGS SD-85070-300, SD-93287-001 AND SD-85084-700 RESPECTIVELY
5. IP RATING: IP40 WHEN CONDUIT USED WITH EXITS



OUTLET SIZE	FEMALE		MALE
DIMENSION	28	32	40
A	32.1	38.3	46.8
B	77.5	77.5	83.3
C	70.0	64.1	68.5
D	125.6	125.6	131.4

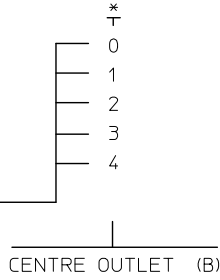
**MATING COMPONENTS VIEW**



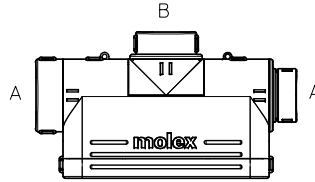
<b>MATERIAL CHANGE</b> EC NO: IPG2013-0850 DRAWN: WALLACE 2012/10/30 CHECKED: SHANHAN 2013/10/10 APPR: SLOTTEN 2013/10/10	QUALITY SYMBOLS	GENERAL TOLERANCES (UNLESS SPECIFIED)	DIMENSION STYLE	SCALE	DESIGN UNITS	THIRD ANGLE PROJECTION
	▼=0 ▽=0	mm INCH 4 PLACES ± --- ± --- 3 PLACES ± --- ± --- 2 PLACES ± 0.25 ± --- 1 PLACE ± 0.5 ± --- ANGULAR ± 2 °	MM ONLY	1:1	METRIC	THIRD ANGLE PROJECTION MOLEX INCORPORATED
	DRAWN BY: JOCONNOR 2010/07/01 CHECKED BY: DATE MSHANAHAN 2012/02/08 APPROVED BY: DATE EFOLAN 2012/02/15	DRAFT WHERE APPLICABLE MUST REMAIN WITHIN DIMENSIONS	SEE SHEET 2	TITLE: SRC CONDUIT INTERFACE DOCUMENT NO: SD-93286-001		SHEET NO. 1 OF 2
	THIS DRAWING CONTAINS INFORMATION THAT IS PROPRIETARY TO MOLEX INCORPORATED AND SHOULD NOT BE USED WITHOUT WRITTEN PERMISSION					

10 9 8 7 6 5 4 3 2 1

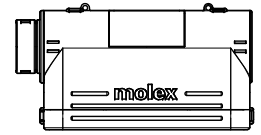
93286-0\*\*\*



A/B	OUTLET
0	BLANK
1	Ø28 MALE
2	Ø28 FEMALE
3	Ø32 FEMALE
4	Ø40 FEMALE

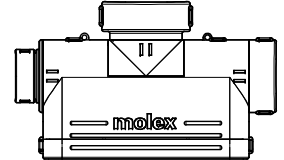


EXAMPLE:



93286-0010:  
SIDE EXITS: Ø28 MALE & BLANK = 01  
CENTRE EXIT: BLANK = 0

EXAMPLE:



93286-0134:  
SIDE EXITS: Ø28 MALE & Ø32 FEMALE = 13  
CENTRE EXIT: Ø40 FEMALE = 4

OUTLET SIZE FORMAT CONVERSION CHART	
NC	NW
28	23
32	29
40	36

- NOTES:  
1. ALL OUTLET SIZES BASED ON UK NC SIZING FORMAT  
2. MALE OUTLETS AVAILABLE IN SIZE NC 28 ONLY

SEE SHEET ONE IEC NO: IEG2013-0850 2012/10/30 DRAWN: WALLACE 2012/10/30 CHECKED: MSHANAHAN 2013/10/10 APPR: STORFFEN 2013/07/10	QUALITY SYMBOLS	GENERAL TOLERANCES (UNLESS SPECIFIED) 4 PLACES ± --- ± --- 3 PLACES ± --- ± --- 2 PLACES ± 0.25 ± --- 1 PLACE ± 0.5 ± --- ANGULAR ± 2 °	DIMENSION STYLE MM ONLY	SCALE 1:2	DESIGN UNITS METRIC	THIRD ANGLE PROJECTION
	▼=0 ▽=0		DRAWN BY: JOCONNOR DATE: 2010/07/01 CHECKED BY: MSHANAHAN DATE: 2012/02/08 APPROVED BY: EFOLAN DATE: 2012/02/15	TITLE SRC CONDUIT INTERFACE		
	DRAFT WHERE APPLICABLE MUST REMAIN WITHIN DIMENSIONS		MATERIAL NO. SEE CHART	MOLEX INCORPORATED DOCUMENT NO. SD-93286-001	SHEET NO. 2 OF 2	
	THIS DRAWING CONTAINS INFORMATION THAT IS PROPRIETARY TO MOLEX INCORPORATED AND SHOULD NOT BE USED WITHOUT WRITTEN PERMISSION					

9 8 7 6 5 4 3 2 1