

## Excellent Integrated System Limited

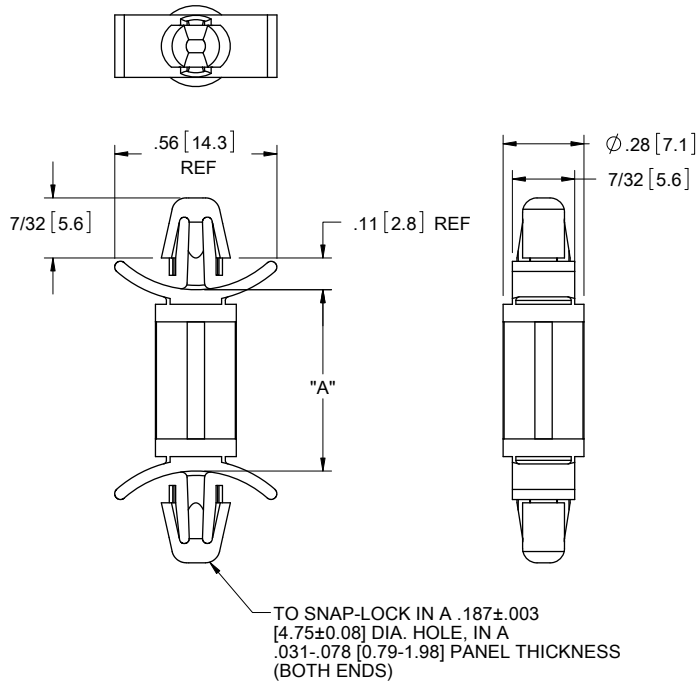
Stocking Distributor

Click to view price, real time Inventory, Delivery & Lifecycle Information:

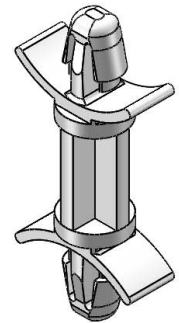
[Essentra Components \(formerly Richco, Inc.\)](#)  
[DLCBS2-3-01](#)

For any questions, you can email us directly:

[sales@integrated-circuit.com](mailto:sales@integrated-circuit.com)



MATERIAL: NYLON 6/6 UL 94 V-2 (RMS-01) COLOR: NATURAL PART NO.	MATERIAL: NYLON 6/6 UL 94 V-0 (RMS-19) COLOR: NATURAL PART NO.	DIM. "A" ±.015 [0.4]
DLCBS2-3-01	DLCBS2-3-19	3/16 [4.8]
DLCBS2-4-01	DLCBS2-4-19	1/4 [6.4]
DLCBS2-6-01	DLCBS2-6-19	3/8 [9.5]
DLCBS2-8-01	DLCBS2-8-19	1/2 [12.7]
DLCBS2-9-01	DLCBS2-9-19	9/16 [14.3]
DLCBS2-10-01	DLCBS2-10-19	5/8 [15.9]
DLCBS2-12-01	DLCBS2-12-19	3/4 [19.1]
DLCBS2-14-01	DLCBS2-14-19	7/8 [22.2]



**NOTES:**

1. MATERIAL: NYLON 6/6 UL 94 HB (RMS-73)  
COLOR: NATURAL.  
AVAILABLE BY SPECIAL ORDER ONLY.  
TO ORDER USE P/N DLCBS2-X-73
2. ALTERNATE UNITS FOR REFERENCE ONLY.

E	SEE CO 200317 FOR CHANGES	SK	02/03/09
D	REDRAWN. SEE ECN #1208 FOR CHANGES	SK	11/29/06
-	SEE ENGINEERING FOR REVISIONS A-C	-	-
REV.	DESCRIPTION	ENGR.	DATE

TITLE: DUAL LOCKING CIRCUIT BOARD SUPPORT, TYPE 2					DWG IN IN [MM]	
CREATED USING SOLIDWORKS	FILE #: DLCBS2	DWN: SK	APP: RT	FINAL		
TOLERANCES UNLESS NOTED XX±.010 XXX±.005 FRAC: ±1/64 ANG: ±1°	SHEET: 1 OF 1	SHEET SIZE: A	DT: 11/27/06	CHKD: SJ	PART #	PRINT TYPE
RE: RICHCO, INC.	RICHCO, INC.		ENG@RICHCO-INC.COM (773) 539-4060		SEE TABLE	CA