



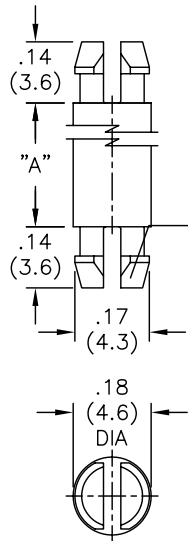
Excellent Integrated System Limited

Stocking Distributor

Click to view price, real time Inventory, Delivery & Lifecycle Information:

[Essentra Components \(formerly Richco, Inc.\)](#)
[DLMSP-2-01](#)

For any questions, you can email us directly:
sales@integrated-circuit.com



TO SNAP-LOCK IN A .152 (3.86)
 $\pm .002$ (0.05) DIA. HOLE, IN A
 $.062$ (1.57) THICK BOARD/CHASSIS
 (BOTH ENDS)

PART NO.	DIM. "A" $\pm .015$ (0.4)
DLMSP-2-01	1/8 (3.2)
DLMSP-3-01	3/16 (4.8)
DLMSP-4-01	1/4 (6.4)
DLMSP-5-01	5/16 (7.9)
DLMSP-6-01	3/8 (9.5)
DLMSP-7-01	7/16 (11.1)
DLMSP-8-01	1/2 (12.7)
DLMSP-9-01	9/16 (14.3)
DLMSP-10-01	5/8 (15.9)
DLMSP-12-01	3/4 (19.1)
DLMSP-14-01	7/8 (22.2)
DLMSP-16-01	1 (25.4)
DLMSP-18-01	1-1/8 (28.6)
DLMSP-20-01	1-1/4 (31.8)
DLMSP-22-01	1-3/8 (34.9)
DLMSP-24-01	1-1/2 (38.1)

NOTES:

- MAT'L: NYLON 66 (RMS-01).
 FLAME RETARDANT: NYLON (RMS-19),
 BY SPECIAL ORDER.
- COLOR: NATURAL.

TITLE: DUAL LOCKING MINI SUPPORT POST			DWG IN IN (MM)		FINAL		PRINT TYPE		
D	CHANGED FILE NUMBER	SM 05.01.01	FILE #	DLMSP	DWN:	P.B.	APP:	PART #	PRINT TYPE
C	MAT'L RMS-19 ADDED	J.L. 12.29.97	MAT'L:	SEE NOTES	DT:	04-07-95	DT:	SEE TABLE	CA
B	TITLE WAS MINI-SUPPORT POST, SPECIAL	PB 05.09.95	RE:	RICHCO, INC.	RICHCO INC. PO BOX 804238, CHICAGO, 60680 (773) 539-4060				
A	CONVERTED TO ACAD	PB 04.07.95							
REV	DESCRIPTION	ENGR DATE	TOLERANCES UNLESS NOTED						