

Excellent Integrated System Limited

Stocking Distributor

Click to view price, real time Inventory, Delivery & Lifecycle Information:

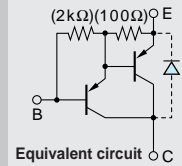
[Sanken](#)
[2SB1351](#)

For any questions, you can email us directly:

sales@integrated-circuit.com

Darlington

2SB1351



Silicon PNP Epitaxial Planar Transistor

Application : Driver for Printer Head, Solenoid, Relay, Motor and General Purpose

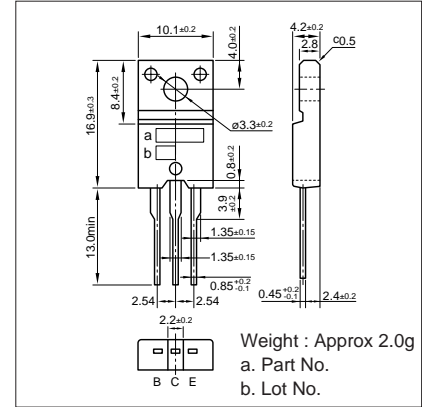
■Absolute maximum ratings (Ta=25°C)

Symbol	Ratings	Unit
V _{CB0}	-60	V
V _{CE0}	-60	V
V _{EB0}	-6	V
I _C	-12(Pulse-20)	A
I _B	-1	A
P _C	30(T _C =25°C)	W
T _J	150	°C
T _{stg}	-55 to +150	°C

■Electrical Characteristics (Ta=25°C)

Symbol	Condition	Ratings	Unit
I _{CB0}	V _{CB} =-60V	-10max	μA
I _{EB0}	V _{EB} =-6V	-10max	mA
V(BR)CEO	I _C =-10mA	-60min	V
h _{FE}	V _{CE} =-4V, I _C =-10A	2000min	
V _{CE(sat)}	I _C =-10A, I _B =-20mA	-1.5max	V
V _{BE(sat)}	I _C =-10A, I _B =-20mA	-2.0max	V
f _T	V _{CE} =-12V, I _E =1A	130typ	MHz
C _{OB}	V _{CB} =-10V, f=1MHz	170typ	pF

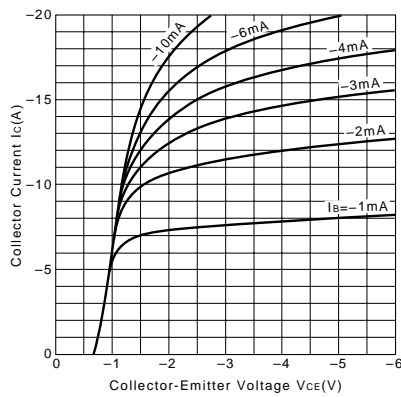
External Dimensions FM20(TO220F)



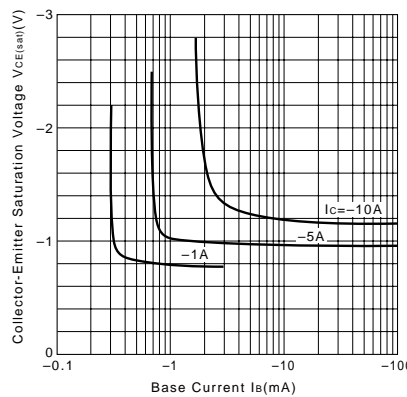
■Typical Switching Characteristics (Common Emitter)

V _{CC} (V)	R _L (Ω)	I _C (A)	V _{BB1} (V)	V _{BB2} (V)	I _{B1} (mA)	I _{B2} (mA)	t _{on} (μs)	t _{stg} (μs)	t _f (μs)
-40	4	-10	-10	5	-20	20	0.7typ	1.5typ	0.6typ

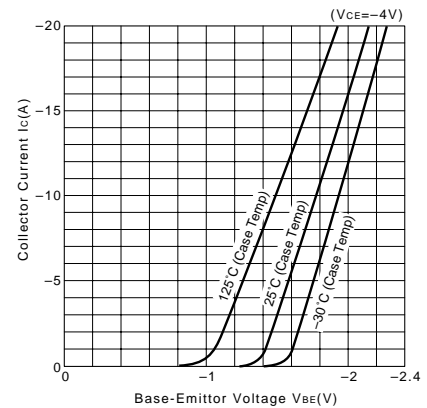
I_C-V_{CE} Characteristics (Typical)



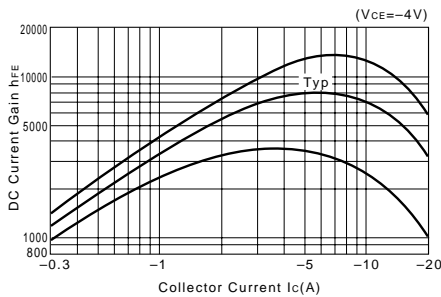
V_{CE(sat)}-I_B Characteristics (Typical)



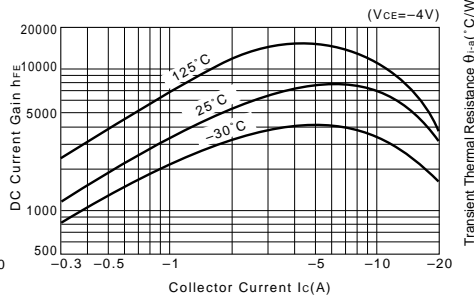
I_C-V_{BE} Temperature Characteristics (Typical)



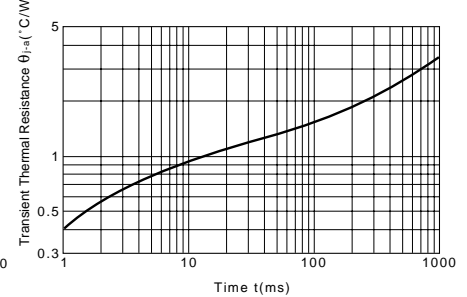
h_{FE}-I_C Characteristics (Typical)



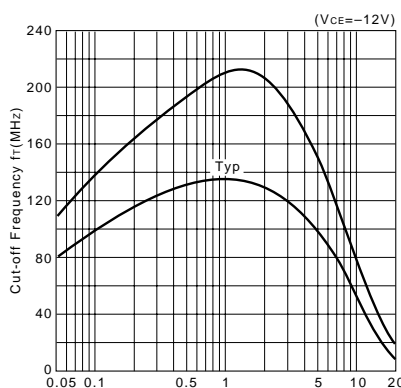
h_{FE}-I_C Temperature Characteristics (Typical)



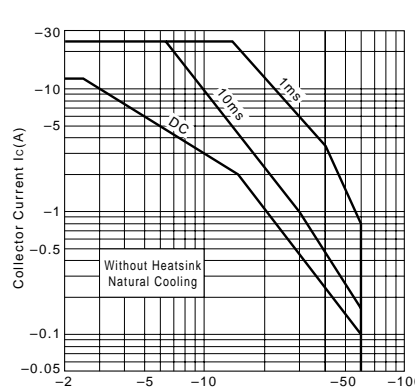
θ_{j-a}-t Characteristics



f_T-I_E Characteristics (Typical)



Safe Operating Area (Single Pulse)



P_C-T_a Derating

