



Excellent Integrated System Limited

Stocking Distributor

Click to view price, real time Inventory, Delivery & Lifecycle Information:

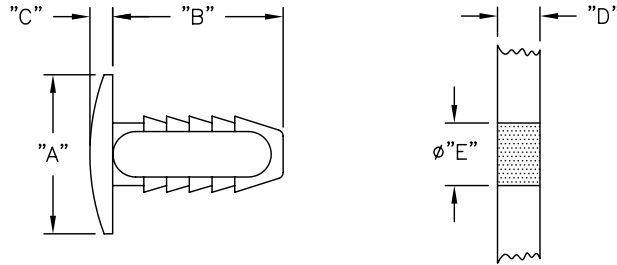
[Essentra Components \(formerly Richco, Inc.\)](#)

[NR-92-1](#)

For any questions, you can email us directly:

sales@integrated-circuit.com

PART NO.	DIM. "A"	DIM. "B"	DIM. "C"	PANEL THICKNESS "D"	HOLE DIA. "E"
NR-92-1	.551 (14.0)	.591 (15.0)	.079 (2.0)	.118-.433 (3.0-11.0)	.228 (5.8)
NR-92-2	.630 (16.0)	.748 (19.0)		.118-.591 (3.0-15.0)	
NR-92-4	.709 (18.0)	.906 (23.0)		.118-.748 (3.0-19.0)	



NOTES:

- MATERIAL: NYLON 6/6 (RMS-01).
- COLOR: NATURAL.
COLOR BLACK AVAILABLE BY SPECIAL ORDER.
TO ORDER ADD SUFFIX "B" TO PART NO.
EXAMPLE: NR-92-XB

TITLE: NYLON RIVET		DWG IN IN (MM)		FINAL	
TOLERANCES UNLESS NOTED .XX=±.010 .XXX=±.005 FRAC=±1/64 ANG=±1°		FILE # NR	DWN: E.P.	APP:	
RE: RICHCO, INC.		MAT'L: SEE NOTES	DT: 9-23-98	DT:	
RICHCO INC. PO BOX 804238, CHICAGO, 60680 (773) 539-4060		PART # NR-92 SERIES		PRINT TYPE CA	
B	SEE ECN #485 FOR CHANGES	SM 10.10.02			
A	CHANGED FILE NO.	SM 03.12.02			
REV	DESCRIPTION	ENGR DATE			