

## Excellent Integrated System Limited

Stocking Distributor

Click to view price, real time Inventory, Delivery & Lifecycle Information:

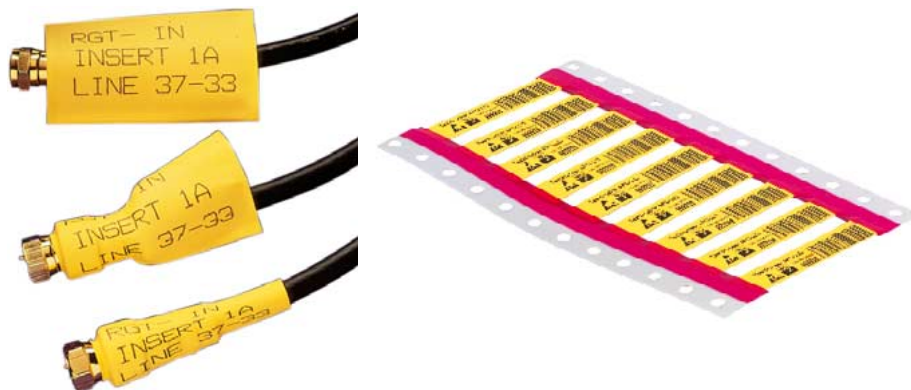
[Weidmüller](#)  
[1680500000](#)

For any questions, you can email us directly:

[sales@integrated-circuit.com](mailto:sales@integrated-circuit.com)

## Heat-shrinkable tube CLS

### CLS



Cable and Wire Markers

The **CLS** heat-shrinkable tubes are particularly tight-fitting and as a result sit securely on the cable. They are printed using thermal transfer printers or matrix printers. **CLS** markers are an attractive alternative where installation space is limited. They combine the optimised use of small labelling areas with high-quality printing.

- Extremely tight fit so as to sit securely on the cable
- High-quality printing for small labelling areas
- Fast printing using thermal transfer or matrix printers

M-Label software for printing on page 65.

### Technical data

Material	molecularly cross-linked polyolefine		
Flammability	UL 224 VW-1		
Temperature range	CLS: -30°C ... +105°C		
Dimensions	Sizes	External diameter	For cable diameters
		3.2 mm	1.2 - 2.7 mm
		4.8 mm	1.7 - 4.1 mm
		6.4 mm	2.3 - 5.4 mm
		12.7 mm	4.5 - 10.8 mm
		25.4 mm	9.1 - 21.6 mm
	Length: 55 mm (one, two or three-part with perforation)		
Colour	CLS: white or yellow		
Possible marking systems	matrix or thermal transfer printer		
Wipe resistance	against abrasion, cleaning agents after shrinking		
Max. shrinking rate	3 : 1		

### Ordering data

Type	Order no.	QTY
<b>Single-part length 48 mm</b>		
CLS 3.2/1 white	1680500000	1000
CLS 4.8/1 white	1680510000	1000
CLS 6.4/1 white	1680520000	1000
CLS 12.7/1 white	1680530000	250
CLS 3.2/1 yellow	1680550000	1000
CLS 4.8/1 yellow	1680560000	1000
CLS 6.4/1 yellow	1680570000	100
CLS 12.7/1 yellow	1680580000	250
<b>Two-part length 24 mm</b>		
CLS 3.2/2 white	1680600000	1000
CLS 4.8/2 white	1680610000	1000
CLS 6.4/2 white	1680620000	1000
CLS 12.7/2 white	1680630000	250
CLS 3.2/2 yellow	1680650000	1000
CLS 4.8/2 yellow	1680660000	1000
CLS 6.4/2 yellow	1680670000	1000
CLS 12.7/2 yellow	1680680000	250

### Ordering data

Type	Order no.	QTY
<b>Three-part length 16 mm</b>		
CLS 3.2/3 white	1680700000	1000
CLS 4.8/3 white	1680710000	1000
CLS 6.4/3 white	1680720000	1000
CLS 12.7/3 white	1680730000	250
CLS 3.2/3 yellow	1680750000	1000
CLS 4.8/3 yellow	1680760000	1000
CLS 6.4/3 yellow	1680770000	1000
CLS 12.7/3 yellow	1680780000	250