



Excellent Integrated System Limited

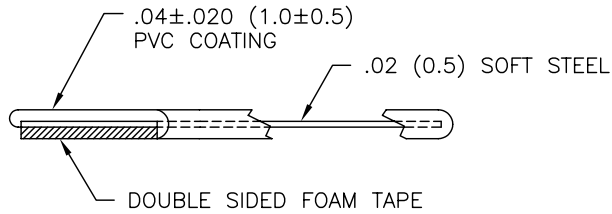
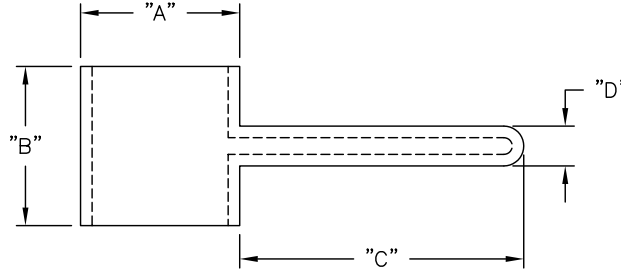
Stocking Distributor

Click to view price, real time Inventory, Delivery & Lifecycle Information:

[Essentra Components \(formerly Richco, Inc.\)](#)
[PCC-5](#)

For any questions, you can email us directly:
sales@integrated-circuit.com

PART NO.	"A" REF.	"B" +.039(1.0) -.020(0.5)	"C" REF.	"D" REF.
PCC-5	.31 (8.0)	.31 (8.0)	.59 (15.0)	.08 (2.1)
PCC-9	.55 (14.0)	.55 (14.0)	.98 (25.0)	.14 (3.5)
PCC-12	.75 (19.0)	.75 (19.0)	1.58 (40.0)	.16 (4.0)



NOTES:

1. MATERIAL: SOFT STEEL (RMS-203)
2. COATING: PVC (RMS-118).
3. POLYETHYLENE FOAM TAPE (RMS-119)
4. COLOR: WHITE.

D			TITLE: PLASTIC COATED CLAMP			DWG IN IN (MM)		FINAL	
SEE ECN #1254 FOR CHANGES			SK 11.29.06	FILE # PCC	DWN: P.B.	APP:		PART #	
ADDED NOTES			SM 06.20.01	MAT'L: SEE NOTES	DT: 07-11-94	DT:		PRINT TYPE	
ADDED RMS-118 AND -119, CHANGED FILE NO. AND TITLE BLOCK			SM 06.01.01	RE: RICHCO, INC.	RICHCO INC. PO BOX 804238, CHICAGO, 60680 (773) 539-4060		SEE TABLE		CA
TOLERANCE FOR "B" WAS ±.020(0.5)			MO 2/11/98	TOLERANCES UNLESS NOTED .XX=±.010 .XXX=±.005 FRAC=±1/64 ANG=±1°					
DESCRIPTION			ENGR DATE						