



Excellent Integrated System Limited

Stocking Distributor

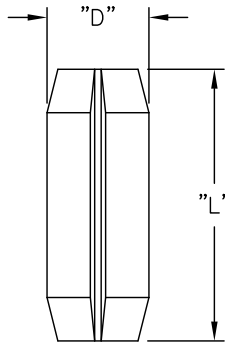
Click to view price, real time Inventory, Delivery & Lifecycle Information:

[Essentra Components \(formerly Richco, Inc.\)](#)
[RRP-250](#)

For any questions, you can email us directly:

sales@integrated-circuit.com

PART NO.	DIM. "L"	DIM. "D"
RRP-250	1/4 (6.4)	3/32 (2.4)
RRP-312	5/16 (8.0)	3/32 (2.4)
RRP-375	3/8 (9.5)	1/8 (3.2)

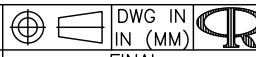



ROLL PINS:(RRP) FOR USE WITH THE FOLLOWING
CARD INSERTERS/EXTRACTORS:

RRP-250	RRP-312	RRP-375
R1001-062	R11073-062	R1209-062
R1002-093	R11073-093	R1209-093
R1003-125	R11073-125	R1209-125
R1107-062	R1107310-062	
R110710-062	R1107310-093	
	R1107310-125	

NOTES:

1. MATERIAL: 302 STAINLESS STEEL (RMS-320)

TITLE: ROUND ROLL PINS			DWG IN IN (MM)	
TOLERANCES UNLESS NOTED .XX=±.010 .XXX=±.005 FRAC=1/64 ANG=1°	FILE # RRP MAT'L: SEE NOTES RE: RICHCO, INC.	DWN: P.B. DT: 03-10-95	APP: DT:	FINAL
			PART # SEE TABLE	PRINT TYPE CA

D	CHANGED MATERIAL NOTES, CO 200582	SK 09.14.10
C	SEE ECN #1289 FOR CHANGES	SK 02.15.07
B	CHANGED FILE NO. AND TITLE BLOCK	SM 05.16.01
A	GIVEN PART NUMBER	JB 09.05.95
REV	DESCRIPTION	ENGR DATE