

## **Excellent Integrated System Limited**

Stocking Distributor

Click to view price, real time Inventory, Delivery & Lifecycle Information:

[Analog Devices Inc.](#)  
[CVT-ADC-FMC-INTPZB](#)

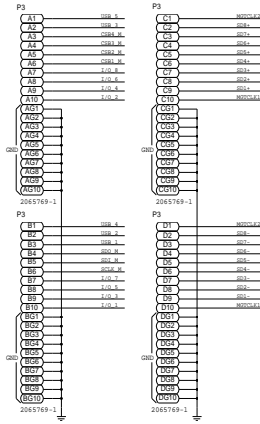
For any questions, you can email us directly:

[sales@integrated-circuit.com](mailto:sales@integrated-circuit.com)

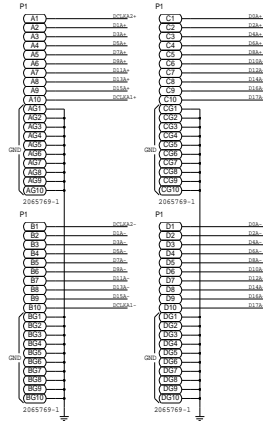
# EVAL BOARD CONNECTIONS

REVISIONS			
REV	DESCRIPTION	DATE	APPROVED

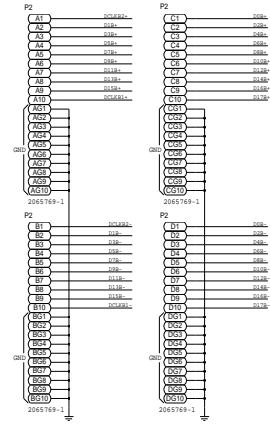
(J1) HS-SERIAL/SPI/AUX



(J3) DATA BUS 2



(J2) DATA BUS 1



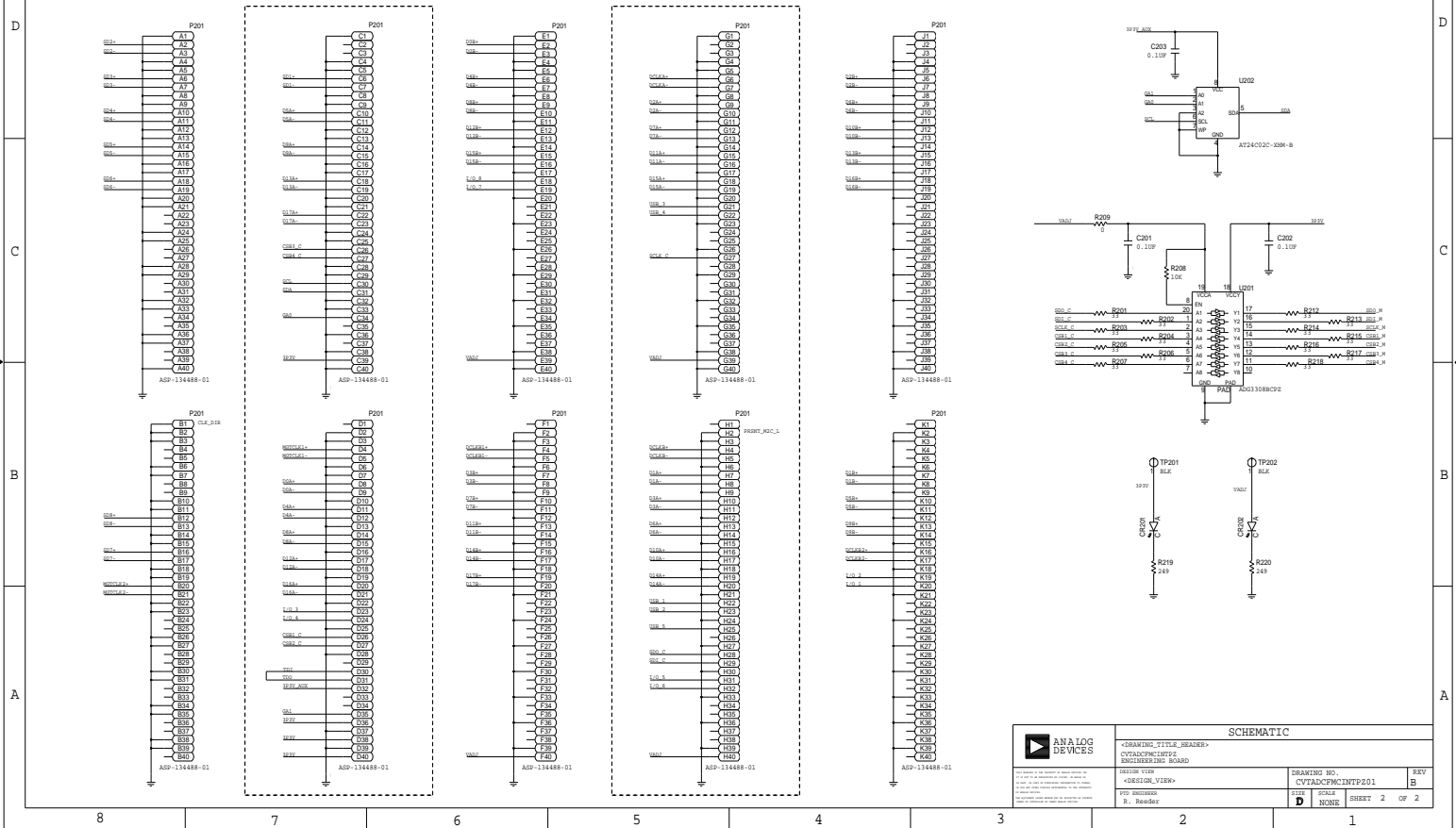
SELECT GLOBAL CLOCK OR CLOCK CAPABLE IO

	SCHEMATIC	
	<DRAWING_TITLE_HEADER> CVTADCFCMINTPZB ENGINEERING BOARD	
	DRAWING NO. CVTADCFCMINTPZB01	REV B
	PR. DESIGNER R. Rowley	DATE NONE SHEET 1 OF 2

### FMC CONNECTIONS

NOTE:  
 3P3V = 3.3V  
 VAD3 = 3.3V - 0V

REVISIONS			
REV	DESCRIPTION	DATE	APPROVED



ANALOG DEVICES		SCHEMATIC	
<DRAWING_TITLE_HEADER> CVT-ADC-FMC-INTPZB ENGINEERING BOARD		DRAWING NO.: CVT-ADC-FMC-INTPZB01	REV B
DESIGN TEAM: PCB DESIGNER: R. Swadeh	SIZE: D	SHEET: NONE	SHEET 2 OF 2