



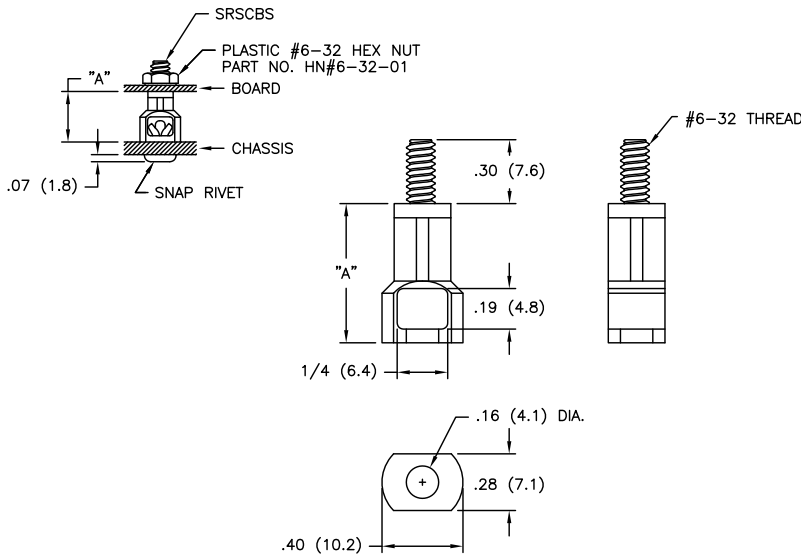
## **Excellent Integrated System Limited**

Stocking Distributor

Click to view price, real time Inventory, Delivery & Lifecycle Information:

[Essentra Components \(formerly Richco, Inc.\)](#)  
[SRSCBS-6-01](#)

For any questions, you can email us directly:  
[sales@integrated-circuit.com](mailto:sales@integrated-circuit.com)



PART NO.	"A"
SRSCBS-6-01	3/8 (9.5)
SRSCBS-7-01	7/16 (11.1)
SRSCBS-8-01	1/2 (12.7)
SRSCBS-10-01	5/8 (15.9)
SRSCBS-12-01	3/4 (19.1)
SRSCBS-14-01	7/8 (22.2)
SRSCBS-16-01	1 (25.4)

USE RICHCO RIVET NO.	FOR CHASSIS THICKNESS
SR-4050	.026-.062 (0.7-1.6)
SR-4060	.062-.105 (1.5-2.7)
SR-4070	.105-.145 (2.7-3.7)
SR-4080	.145-.184 (3.7-4.7)
SR-4090	.184-.223 (4.7-5.7)
SR-4100	.223-.263 (5.7-6.7)
SR-4120	.282-.341 (7.2-8.7)

NOTES:

- MATERIAL: NYLON 6/6 (RMS-01).  
FLAME RETARDANT, NYLON (RMS-19),  
AVAILABLE BY SPECIAL ORDER ONLY.
- COLOR: NATURAL.
- M3 & M4 THREAD AVAILABLE BY SPECIAL ORDER ONLY.  
TO ORDER, ADD "-M3" OR "-M4" TO PART NO.  
EXAMPLE: SRSCBS-M3-8-XX  
SRSCBS-M4-8-XX
- .157 TO .161 (4.0 TO 4.1) DIA. HOLE  
IN CHASSIS REQUIRED FOR APPLICATION

D		SEE CO 200401 FOR CHANGES		SK 07.30.09	TOLERANCES UNLESS NOTED			FILE # SRSCBS	DWN: P.B.	APP:	DWG IN IN (MM)		FINAL	PART #	PRINT TYPE
C		SEE ECN #1253 FOR CHANGES		SK 11.29.06	.XX=±.010	MAT'L: SEE NOTES			DT: 05-03-94	DT:	IN (MM)				
B		SEE ECN #1002 FOR CHANGES		SK 05.11.05	.XXX=±.005	RE: RICHCO, INC.			RICHCO INC.			PO BOX 804238, CHICAGO, 60680			
A		UPDATED PRINT AND CHANGED FILE NO.		SM 05.09.02	FRAC=±1/64	ANG=±1°			(773) 539-4060						
REV		DESCRIPTION		ENGR DATE											
TITLE: SNAP RIVET STUDDED CIRCUIT BOARD SUPPORT															