



## **Excellent Integrated System Limited**

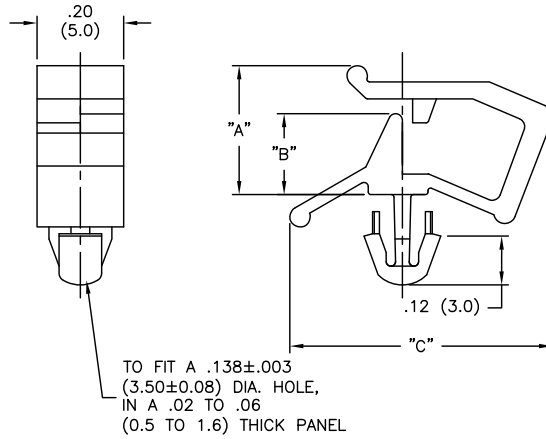
Stocking Distributor

Click to view price, real time Inventory, Delivery & Lifecycle Information:

[Essentra Components \(formerly Richco, Inc.\)](#)  
[WS-SE1-1-01](#)

For any questions, you can email us directly:  
[sales@integrated-circuit.com](mailto:sales@integrated-circuit.com)

PART NO.	"A" REF.	"B"	"C" REF.
WS-SE1-1-01	.19 (4.8)	.09 (2.4)	.50 (12.7)
WS-SE1-2-01	.26 (6.7)	.16 (4.2)	.59 (15.1)
WS-SE1-3-01	.34 (8.5)	.23 (5.7)	.81 (20.3)



NOTES:

- MATERIAL: NYLON 66 (RMS-01).  
FLAME RETARDANT NYLON 66 (RMS-19)  
AVAILABLE BY SPECIAL ORDER.
- COLOR: NATURAL

A		SM 10.25.02		TITLE: WIRE SADDLE-SIDE ENTRY		DWG IN IN (MM)		FINAL		PRINT TYPE		
CHANGED FILE NO. AND TITLE BLOCK	DESCRIPTION	ENGR	DATE	FILE #	WS-SE1	DWN:	J.B.	DT:	08-28-95	PART #	SEE TABLE	
REVISION	DESCRIPTION	ENGR	DATE	MAT'L:	SEE NOTES	CHKD:		ENGR:			CA	
				RE:	RICHCO, INC.	RICHCO INC. PO BOX 804238, CHICAGO, 60680 (773) 539-4060						
				TOLERANCES UNLESS NOTED								
				.XX=±.010								
				.XXX=±.005								
				FRAC=±1/64								
				ANG=±1°								