

Excellent Integrated System Limited

Stocking Distributor

Click to view price, real time Inventory, Delivery & Lifecycle Information:

[Bel Fuse Inc.](#)
[6605841-1](#)

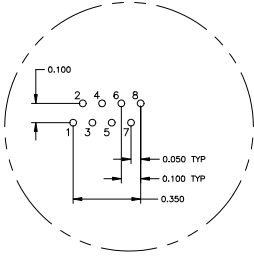
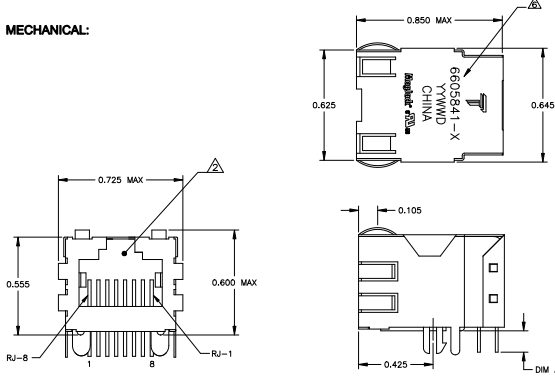
For any questions, you can email us directly:
sales@integrated-circuit.com

THIS DRAWING AND THE SUBJECT MATTER SHOWN THEREON ARE CONFIDENTIAL AND THE PROPERTY OF BEL/STEWART/TRP CONNECTOR AND SHALL NOT BE REPRODUCED, COPIED, OR USED IN ANY MANNER WITHOUT THE WRITTEN CONSENT OF TRP CONNECTOR.

PRODUCT MAY BE PROTECTED BY ONE OR MORE OF THE FOLLOWING US PATENTS:
 6736940-5939956-6426781-6428361-6584638-6840817-7123117
 7429195 7717749 7808751 6217391 6149050 7924130

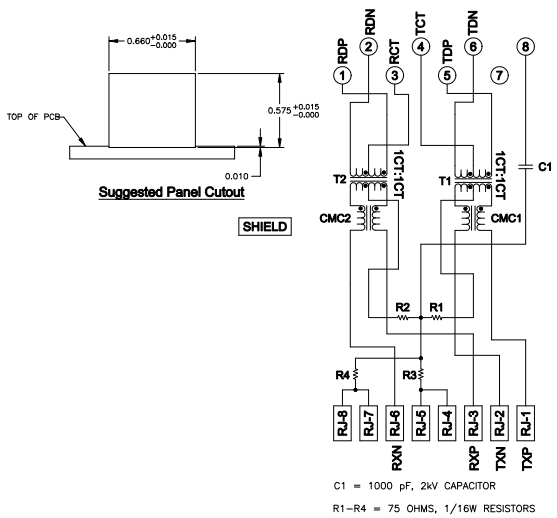
REVISIONS		DATE	BY	APP
1	ISSUE			
2	EC-1411535 COMPANY LOGO CHANGE	04/20/2016	HY	KZ

MECHANICAL:



Pin Designations

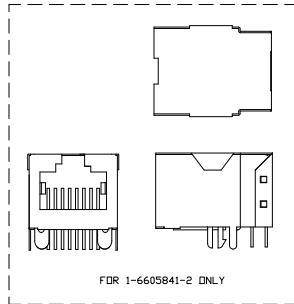
728ET SERIES MAGNETIC CIRCUIT



C1 = 1000 pF, 2KV CAPACITOR
 R1-R4 = 75 OHMS, 1/16W RESISTORS

- MATERIALS:**
 - HOUSING - THERMOPLASTIC PET POLYESTER FLAMMABILITY RATING UL 94V-0
 - SHIELD - 0.010" THICK C26800 BRASS PREPLATED WITH 30µMCH MIN SEMI-BRIGHT NICKEL. SOLDER TABS POST DIPPED WITH 100µMCH MIN SAC SOLDER
 - MOD JACK CONTACTS - 0.0157" x 0.018" PHOSPHOR BRONZE, 50µMCH MIN OVERALL NICKEL UNDERPLATE, WITH SELECT 50µMCH MIN HARD GOLD FINISH PLATE. SOLDER TAILS WITH 100µMCH MIN MATTE TIN AND/OR SAC SOLDER DIP.
- RJ45 JACK CAVITY CONFORMS TO FCC RULES AND REGULATIONS PART 68, SUB PART F.**
- MAGNETICS:**
 - IMPEDANCE: 100 OHMS
 - TURNS RATIO (CHP, CABLE): TX + 11, RX + 11
 - OPEN CIRCUIT INDUCTANCE (OCL): 350nH MIN @100MHz, 0.1VRMS, 8mADC BIAS FROM -0°C TO +85°C, TX AND RX
 - PERFORMANCE @ 25°C
 - INSERTION LOSS (IL): 1.1dB MAX FROM 0.5MHz TO 100MHz
 - RETURN LOSS (RL): 18dB MIN FROM 0.5MHz TO 30MHz
 - 18-20LOG(1/20)dB MIN FROM 30.9MHz TO 60MHz
 - 12dB MIN FROM 60.9MHz TO 80MHz
 - CROSSTALK ATTENUATION: 35dB MIN FROM 0.5MHz TO 40MHz
 - 33-20LOG(1/50)dB MIN FROM 40.9MHz TO 100MHz
 - COMMON MODE REJECTION RATIO (CMRR): 30dB MIN FROM 0.5MHz TO 100MHz
 - ISOLATION VOLTAGE 2250VDC (MAX) FOR 60 SECONDS WITH A RISE TIME OF 500V/SEC.

- OPERATING TEMPERATURE: FROM -40° - +85°C
- INDICATED CONNECTIONS ARE FOR NIC CONFIGURATION. THE MAGNETICS ARE SYMMETRICAL, AND THEREFORE ARE AUTO-MDIX/MDIX CAPABLE.
- TRP CONNECTOR, PART NUMBER, DATE CODE, COUNTRY OF ORIGIN AND AGENCY APPROVAL MARKING IN APPROXIMATE LOCATION SHOWN.
- THE PART IS RECOMMENDED FOR WAVE SOLDERING PROCESS. PEAK WAVE SOLDERING TEMPERATURE IS 265°C MAX, 10 SECONDS MAX.



OBsolete	ND	0.120±0.010	1-6605841-2
YES		0.120±0.010	6605841-2
YES		0.145±0.010	6605841-1
EMI FINGER		DIMENSION A	PART NUMBER

THIS DRAWING IS A CONTROLLED DOCUMENT.		REV	DATE	BY	CHK	APP
DESCRIPTION	QUANTITY	DATE	BY	CHK	APP	
108-2100						



1X1 72NET 10/100 TAB UP W/O LED

6605841