

Excellent Integrated System Limited

Stocking Distributor

Click to view price, real time Inventory, Delivery & Lifecycle Information:

[Bel Fuse Inc.](#)
[5-6605844-1](#)

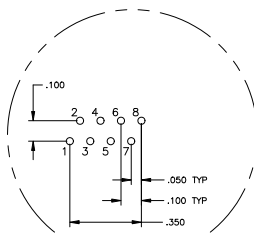
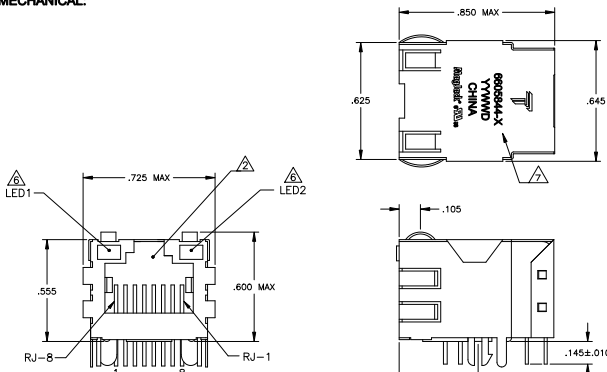
For any questions, you can email us directly:
sales@integrated-circuit.com

THIS DRAWING AND THE SUBJECT MATTER SHOWN THEREON ARE CONFIDENTIAL AND THE PROPERTY OF BEL/STEWART/TRP CONNECTOR AND SHALL NOT BE REPRODUCED, COPIED, OR USED IN ANY MANNER WITHOUT THE WRITTEN CONSENT OF TRP CONNECTOR.

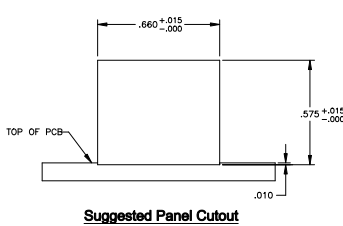
PRODUCT MAY BE PROTECTED BY ONE OR MORE OF THE FOLLOWING US PATENTS:
 6736910-5939956-6426781-6428361-6584638-6840817-7123117
 7429195-7717749-7808751-6217391-6149050-7924130

| REV | DESCRIPTION | DATE | BY | APP |
|-----|-------------------------------|----------|----|-----|
| E | EC-141153 COMPANY LOGO CHANGE | 04/20/16 | HY | KZ |

MECHANICAL:

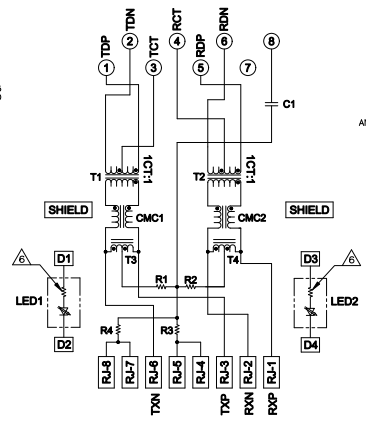


Pin Designations

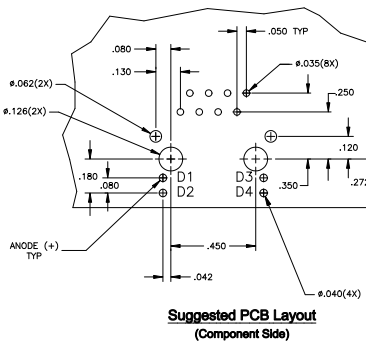


Suggested Panel Cutout

ELECTRICAL:
75SET SERIES MAGNETIC CIRCUIT



C1 = 1000 pF, 2kV DECOUPLING CAPACITOR
 R1-R4 = 75 OHMS, 1/16 W, 5% RESISTORS



Suggested PCB Layout (Component Side)

- △ MATERIALS:
 - HOUSING - THERMOPLASTIC PET POLYESTER FLAMMABILITY RATING UL 94V-0.
 - SHIELD - .010" THICK, C26800 BRASS PREPLATED WITH 30µMCH MIN SEMI-BRIGHT NICKEL, SOLDER TABS POST DIPPED WITH 100µMCH MIN SAC SOLDER.
 - MOD JACK CONTACTS - 0.0157" x 0.018" PHOSPHOR BRONZE, 50µMCH MIN OVERALL NICKEL UNDERPLATE, WITH SELECT 50µMCH MIN HARD GOLD FINISH PLATE.
 - SOLDERTAILS WITH 100µMCH MIN MATTE TIN AND/OR SAC SOLDER DIP.
 - LIGHT EMITTING DIODE(LED) - DIFFUSED EPOXY LENS, .020" x .020" CARBON STEEL WIREFRAME LEADS PRE-PLATED WITH 80µMCH SILVER OVER 40µMCH NICKEL UNDERPLATE OVER 40µMCH COPPER UNDERPLATE, POST-PLATED WITH 100µMCH MIN MATTE TIN AND/OR SAC SOLDER DIP OR PURE TIN SOLDER DIP.
- △ RJ45 JACK CAVITY CONFORMS TO FCC RULES AND REGULATIONS PART 68, SUB PART F.
- △ MAGNETICS
 - IMPEDANCE: 100 OHMS
 - TURNS RATIO (CHIP CABLE): TX = 1:1, RX = 1:1
 - OPEN CIRCUIT INDUCTANCE (OCL): 350µH MIN @100MHz, 0.1VRMS, 8mADC BIAS FROM -40°C TO +85°C, TX AND RX
 - PERFORMANCE @ 25°C:
 - INSERTION LOSS (IL): 1.1dB MAX FROM 0.5MHz TO 100MHz
 - RETURN LOSS (RL): 10dB MIN FROM 0.5MHz TO 20MHz
 - 18-20LOG(F/30)dB MIN FROM 30.1MHz TO 60MHz
 - 12dB MIN FROM 60.1MHz TO 80MHz
 - CROSSTALK ATTENUATION: 35dB MIN FROM 0.5MHz TO 4.0MHz
 - 33-20LOG(F/50)dB MIN FROM 4.0MHz TO 100MHz
 - COMMON MODE REJECTION RATIO (CMRR): 30dB MIN FROM 0.5MHz TO 100MHz
 - ISOLATION VOLTAGE(25VDC (MAX)) FOR 60 SECONDS WITH A RISE TIME OF 500V/SEC.
 - 4. OPERATING TEMPERATURE: FROM -40°C TO +85°C INDUSTRIAL TEMPERATURE RATED.
- △ INDICATED CONNECTIONS ARE FOR HUB CONFIGURATION. THE MAGNETICS ARE SYMMETRICAL, AND SUPPORTS AUTO-MDI/MDIX.
- △ THE 250 OHM RESISTOR IS INCLUDED IN THE LEADS. LEADS ARE DRIVEN WITH 5V VOLTAGE AND THE MAX OPERATING CURRENT IS 20mA. LED COLOR: DOMINANT WAVELENGTH (AD): GREEN 568 nm TYP @ VF=5V FORWARD CURRENT (IF): GREEN 12mA TYP @ VF=5V DOMINANT WAVELENGTH (AD): YELLOW 588 nm TYP @ VF=5V FORWARD CURRENT (IF): YELLOW 13mA TYP @ VF=5V
- △ TRP CONNECTOR LOGO, PART NUMBER, DATE CODE, COUNTRY OF ORIGIN AND AGENCY APPROVAL MARKING IN APPROXIMATE LOCATION SHOWN.
- 8. THE PART IS RECOMMENDED FOR WAVE SOLDERING PROCESS. PREHEAT TEMPERATURE IS 120°C TO 160°C, 100 SECONDS TO 180 SECONDS, PEAK WAVE SOLDERING TEMPERATURE IS 260°C MAX, 10 SECONDS MAX.

| GREEN | | YELLOW | | 5-6605844-1 | |
|----------------------------------------|----------|----------------|----------|----------------|-----|
| LED1 | LED2 | PART NUMBER | | DONGGUAN CHINA | |
| THIS DRAWING IS A CONTROLLED DOCUMENT. | | REV | DATE | BY | APP |
| 108-2100 | 108-2100 | 1 | 10/10/10 | HY | KZ |
| CUSTOMER DRAWING | | MAGJACK SINGLE | | REWORKED TO | |
| | | NON-POE | | 5-6605844 | |
| | | DATE | | REV | |