

Excellent Integrated System Limited

Stocking Distributor

Click to view price, real time Inventory, Delivery & Lifecycle Information:

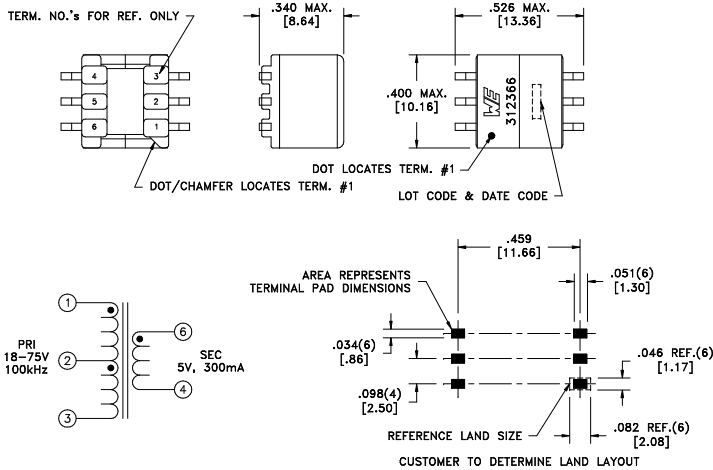
[Würth Electronics Midcom](#)
[750312366](#)

For any questions, you can email us directly:

sales@integrated-circuit.com

CUSTOMER	TERMINAL	RoHS	LEAD(Pb)-FREE
Sn96%, Ag4%	Yes	Yes	Yes

more than you expect



ELECTRICAL SPECIFICATIONS @ 25°C unless otherwise noted:

PARAMETER	TEST CONDITIONS	VALUE
D.C. RESISTANCE	1-3 @20°C	0.98 ohms ±10%
D.C. RESISTANCE	6-4 @20°C	0.055 ohms max.
INDUCTANCE	1-3 10kHz, 100mVAC, Is	400uH ±10%
SATURATION CURRENT	20% rolloff from initial	580mA
LEAKAGE INDUCTANCE	1-3 tie(4+6), 100kHz, 100mVAC, Is	4.0uH typ., 8.0uH max.
DIELECTRIC	1-6 1850VAC, 1 second	1500VAC, 1 minute
TURNS RATIO	(1-2):(2-3)	1:1, ±1%
TURNS RATIO	(1-3):(6-4)	7.111:1, ±1%

GENERAL SPECIFICATIONS:

OPERATING TEMPERATURE RANGE: -40°C to +125°C including temp rise.

Safety Standard Undefined.

Wire insulation & RoHS status not affected by wire color.
Wire insulation color may vary depending on availability.

REV.	DATE	Packaging Specifications Method: Tape & Reel PKG-0519 www.we-online.com/midcom		Tolerances unless otherwise specified: Angles: ±1° Fractions: ±1/64 Decimals: ±.005 [0.13] Footprint: ±.005 [0.13]	DRAWING TITLE TRANSFORMER	PART NO. 750312366
6A	01/12	SEE REVISION SHEET FOR REVISION LEVEL	CONVENTION PLACEMENT	This drawing is dual dimensioned. Dimensions in brackets are in millimeters.	eiSos p/n: 750312366	SPECIFICATION SHEET 1 OF 1