

## Excellent Integrated System Limited

Stocking Distributor

Click to view price, real time Inventory, Delivery & Lifecycle Information:

[Würth Electronics Midcom](#)  
[750341146](#)

For any questions, you can email us directly:

[sales@integrated-circuit.com](mailto:sales@integrated-circuit.com)

CUSTOMER TERMINAL	RoHS	LEAD(Pb)-FREE
Sn96%, Ag4%	Yes	Yes

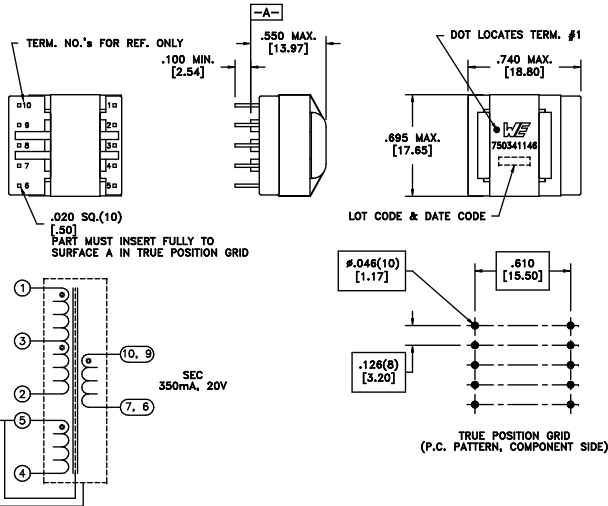
more than you expect



Midcom

ELECTRICAL SPECIFICATIONS @ 25°C unless otherwise noted:

PARAMETER	TEST CONDITIONS	VALUE
D.C. RESISTANCE	1-2 @20°C	2.00 ohms max.
D.C. RESISTANCE	4-5 @20°C	0.96 ohms max.
D.C. RESISTANCE	6-10 tie(6+7, 9+10), @20°C	0.17 ohms max.
INDUCTANCE	1-2 100kHz, 100mVAC, Is	750uH ±10%
LEAKAGE INDUCTANCE	1-2 tie(4+5+6+7+9+10), 100kHz, 100mVAC, Is	8.00uH max.
DIELECTRIC	1-10 tie(2+4, 9+10), 3750VAC, 1 second	3000VAC, 1 minute
URNS RATIO	(2-1):(4-5)	4.94:1, ±2%
URNS RATIO	(2-1):(6-10), tie(6+7, 9+10)	4.66:1, ±2%



Wire insulation & RoHS status not affected by wire color.  
Wire insulation color may vary depending on availability.

REV.	DATE	Packaging Specifications Method: Tray PKG-0887 www.we-online.com/midcom		Tolerances, unless otherwise specified: Angles: ±1° Fractions: ±1/64 Decimals: ±.005 [.13] Footprint: ±.001 [.03]	DRAWING TITLE TRANSFORMER	PART NO. 750341146
6B	10/12			This drawing is dual dimensioned. Dimensions in brackets are in millimeters.	eISos p/n: 750341146	SPECIFICATION SHEET 1 OF 1
6A	3/12	SEE REVISION SHEET FOR REVISION LEVEL				