

## Excellent Integrated System Limited

Stocking Distributor

Click to view price, real time Inventory, Delivery & Lifecycle Information:

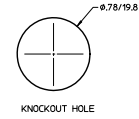
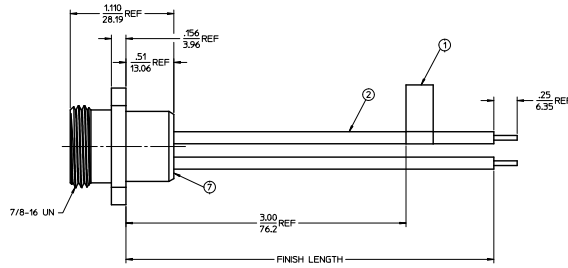
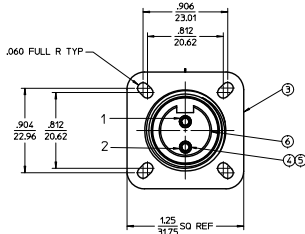
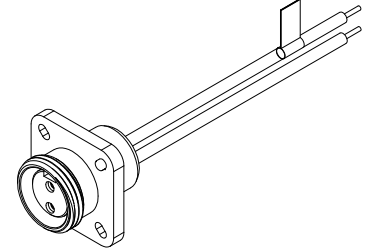
[Molex Connector Corporation](#)  
[1300130093](#)

For any questions, you can email us directly:

[sales@integrated-circuit.com](mailto:sales@integrated-circuit.com)

| MATERIAL NUMBER | OLD PART NUMBER | FINISH LENGTH            |
|-----------------|-----------------|--------------------------|
| 130013-0093     | 1R2G04A20A120   | 1.0'+.75"-0 [.3M+19.1-0] |

|                       |                                 |
|-----------------------|---------------------------------|
| VOLTAGE RATING        | 600 VAC/VDC                     |
| AMPERAGE RATING       | 13A                             |
| PROJECTION            | IP67                            |
| OPERATING TEMPERATURE | -20° C TO 105° C                |
| UL CERTIFICATIONS     | UL RECOGNIZED, FILE NO. E152210 |
| CSA CERTIFICATIONS    | CSA CERTIFIED, FILE NO. LR6837  |



WIRING DIAGRAM

- 1> WHITE
- 2> BLACK

| ITEM. | QTY. | COMPONENT                                      | MATERIAL        | FINISH             |
|-------|------|--|-----------------|--------------------|
| 1     | 1    | FLAG LABEL                                     | PLASTIC FILM    | BLACK/YELLOW       |
| 2     | 2    | CONDUCTOR-16 AWG, 26X#30 COPPER STRANDING 600V | PVC             | SEE WIRING DIAGRAM |
| 3     | 1    | RECEPTACLE SHELL                               | ALUMINUM        | ANODIZED           |
| 4     | 2    | SOCKET SLEEVE                                  | STAINLESS STEEL |                    |
| 5     | 2    | CONTACT SOCKET                                 | COPPER ALLOY    | GOLD PLATED        |
| 6     | 1    | 2 POLE INSERT                                  | PVC             | YELLOW             |
| 7     | 1    | POTTING  | EPOXY           | BLACK              |

|  |  |  |                          |              |                      |                        |
|--|--|--|--------------------------|--------------|----------------------|------------------------|
| CREATE DOC<br>ECN NO. WA2010-0423<br>2010/01/08<br>DESIGNED BY<br>B. RUPERT<br>2010/01/14<br>CHECKED BY<br>B. WOODMAN<br>2010/01/14<br>APPROVED BY<br>J. MURPHY<br>2010/01/14<br>MATERIAL NO.<br>SEE CHART<br>DRAFT WHERE APPLICABLE<br>MUST REMAIN<br>WITHIN DIMENSIONS | QUALITY SYMBOLS<br>4 PLACES ±.005<br>3 PLACES ±.005<br>2 PLACES ±0.013<br>1 PLACE ±.005<br>ANGULAR ±1/2°                   | GENERAL TOLERANCES (UNLESS SPECIFIED)<br>DIM INCH ±.005<br>DIM MM ±.013<br>ANGULAR ±1/2° | DIMENSION STYLE<br>IN/MM | SCALE<br>2:1 | DESIGN UNITS<br>INCH | THIRD ANGLE PROJECTION |
|  | DRAWN BY: B. RUPERT DATE: 01/07/2010<br>CHECKED BY: B. WOODMAN DATE: 01/07/2010<br>APPROVED BY: J. MURPHY DATE: 2010/01/14 |  |                          |              |                      |                        |
|  | TITLE: FEMALE FLANGED RECEPTACLE MINI-CHANGE 2P 16AWG PVC  |  |                          |              |                      |                        |
|  | MOLEX INCORPORATED<br>DOCUMENT NO. SD-130013-014 SHEET NO. 1 OF 1  |  |                          |              |                      |                        |