

Excellent Integrated System Limited

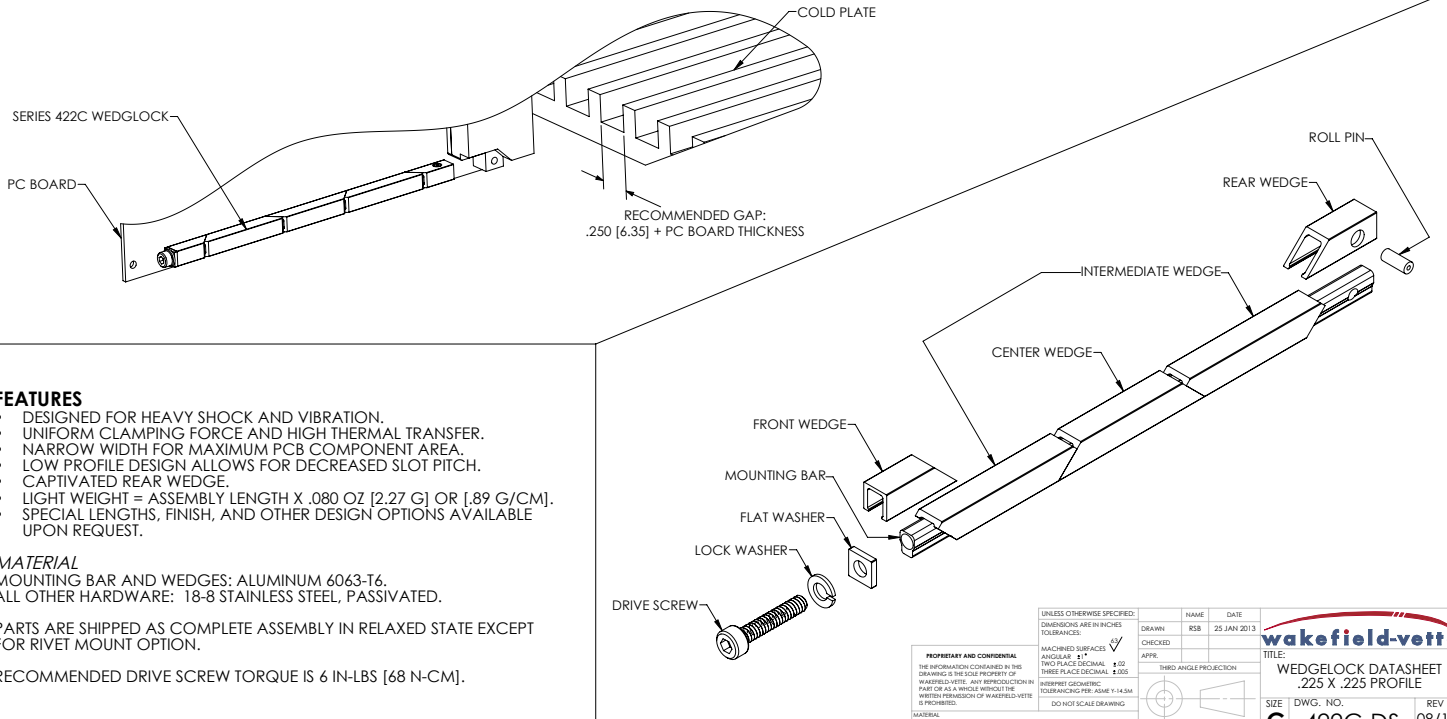
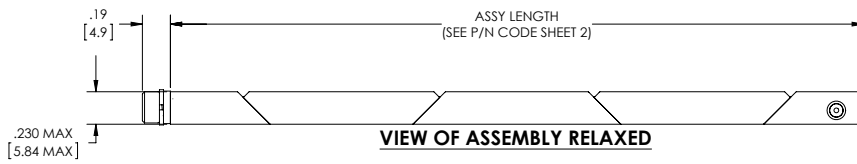
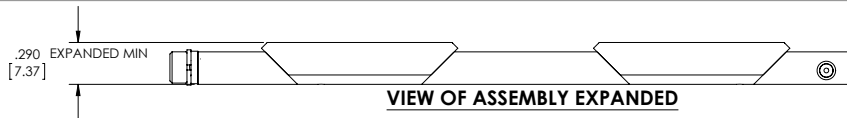
Stocking Distributor

Click to view price, real time Inventory, Delivery & Lifecycle Information:

[Wakefield](#)
[422C-280UMB](#)

For any questions, you can email us directly:

sales@integrated-circuit.com



FEATURES

- DESIGNED FOR HEAVY SHOCK AND VIBRATION.
- UNIFORM CLAMPING FORCE AND HIGH THERMAL TRANSFER.
- NARROW WIDTH FOR MAXIMUM PCB COMPONENT AREA.
- LOW PROFILE DESIGN ALLOWS FOR DECREASED SLOT PITCH.
- CAPTIVATED REAR WEDGE.
- LIGHT WEIGHT = ASSEMBLY LENGTH X .080 OZ [2.27 G] OR [.89 G/CM].
- SPECIAL LENGTHS, FINISH, AND OTHER DESIGN OPTIONS AVAILABLE UPON REQUEST.

MATERIAL

MOUNTING BAR AND WEDGES: ALUMINUM 6063-T6.
ALL OTHER HARDWARE: 18-8 STAINLESS STEEL, PASSIVATED.

PARTS ARE SHIPPED AS COMPLETE ASSEMBLY IN RELAXED STATE EXCEPT FOR RIVET MOUNT OPTION.

RECOMMENDED DRIVE SCREW TORQUE IS 6 IN-LBS [68 N-CM].

UNLESS OTHERWISE SPECIFIED: DIMENSIONS ARE IN INCHES TOLERANCES: MACHINED SURFACES $\pm .010$ ANGULAR $\pm 1^\circ$ TWO PLACE DECIMAL $\pm .02$ THREE PLACE DECIMAL $\pm .005$ INTERPRET GOVERNING DIMENSIONS PER ASME Y14.5M DO NOT SCALE DRAWING	NAME: RSB DATE: 25 JAN 2013				
	DRAWN: RSB CHECKED: APPR: THIRD ANGLE PROJECTION				
PROPERTY AND CONFIDENTIAL THE INFORMATION CONTAINED IN THIS DRAWING IS THE SOLE PROPERTY OF WAKEFIELD-VETTE. ANY REPRODUCTION IN PART OR AS A WHOLE WITHOUT THE WRITTEN PERMISSION OF WAKEFIELD-VETTE IS PROHIBITED. MATERIAL: SEE PART DETAILS FINISH: SEE FINISH TABLE	<table border="1"> <tr> <td colspan="2"> wakefield-vette TITLE: WEDGELOCK DATASHEET .225 X .225 PROFILE </td> </tr> <tr> <td> SIZE: C DWG. NO.: 422C-DS SCALE: NONE </td> <td> REV: 08/13 SHEET 1 OF 2 </td> </tr> </table>	wakefield-vette TITLE: WEDGELOCK DATASHEET .225 X .225 PROFILE		SIZE: C DWG. NO.: 422C-DS SCALE: NONE	REV: 08/13 SHEET 1 OF 2
wakefield-vette TITLE: WEDGELOCK DATASHEET .225 X .225 PROFILE					
SIZE: C DWG. NO.: 422C-DS SCALE: NONE	REV: 08/13 SHEET 1 OF 2				

[LLL] LENGTH TABLE			
ASSY LENGTH [LLL]	[H] MTG	[C] OPTION	X/2
280	0.900	0.450	
330	1.400	0.700	
380	1.900	0.950	
430	2.400	1.200	
480	2.900	1.450	
530	3.400	1.700	
580	3.900	1.950	

OTHER LENGTHS AVAILABLE UPON REQUEST

PART#1 EXAMPLE: 422C-480UMG
4.80" LENGTH, M2 MOUNT HOLES, METRIC M2.5 SOCKET HEAD, GOLD CHEM FILM

PART#2 EXAMPLE: 422C-480UMG-CP
SAME AS ABOVE PLUS CENTER MOUNTING HOLE AND LOCK PATCH OPTIONS

[H] MOUNTING TABLE	
DASH NO	DESCRIPTION
A	NO MOUNTING HOLES
R	$\varnothing .068 / .073$ THRU $\sqrt{100^\circ}$ X $\varnothing .213$
T	#0-80 UNF-2B THREADS
S	#2-56 UNC-2B THREADS
U	M2 X .4-6H THREADS
M	M2.5 X .45-6H THREADS

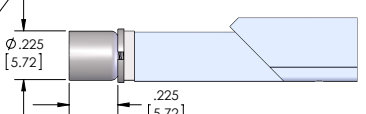
[x] FINISH TABLE	
DASH NO	DESCRIPTION
A	NONE
C	CHEM FILM PER MIL-DTL-5541, CLASS 1A, TYPE I (CLEAR)
G	CHEM FILM PER MIL-DTL-5541, CLASS 1A, TYPE I (GOLD)
B	BLACK ANODIZE PER MIL-A-8625, TYPE II, CLASS 2
H	HARD BLACK ANODIZE PER MIL-A-8625, TYPE III, CLASS 2
N	NICKEL PLATE PER QQ-N-290, CLASS 1, GRADE G, BRIGHT
E	ELECTROLESS NICKEL PER MIL-C-26074, CLASS 4, GRADE B, BRIGHT
T	TRIVALENT CHEM FILM PER MIL-DTL-5541, CLASS 1A, TYPE II (CLEAR), RoHS COMPLIANT

ALL THREADS ARE GAUGED PRIOR TO PLATING

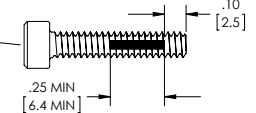
PART NUMBER CODE

422C - [LLL] [H] [D] [F] [C] [K] [P] [V]

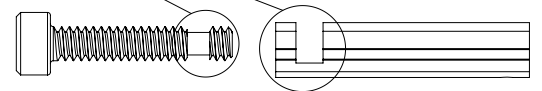
- 422C - SERIES PART NO.
- [LLL] - LENGTH (EX. 480" = 4.80")
- [H] - MOUNTING HOLE (SEE MOUNTING TABLE)
- [D] - DRIVE SCREW 'M' FOR M2.5 HEX 'S' FOR 3/32 HEX
- [F] - FINISH (SEE FINISH TABLE)
- [C] - ADD 'C' FOR OPTIONAL CENTER MOUNTING HOLE
- [K] - ADD 'K' FOR OPTIONAL CAPTIVE SCREW FEATURE
- [P] - ADD 'P' FOR OPTIONAL LOCK PATCH
- [V] - ADD 'V' FOR OPTIONAL VISUAL INDICATOR



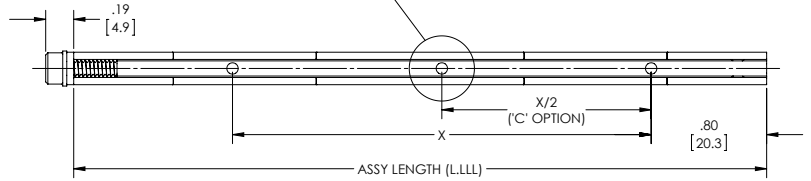
'V' OPTION
VISUALLY CONFIRMS LOCKED IN PLACE WHEN RED SCREW HEAD IS CONCEALED



'P' OPTION
NYLON PATCH PER MIL-F-18240 PROVIDES ADDITIONAL RESISTANCE TO SHOCK AND VIBRATION



'K' OPTION
CAPTIVATES SCREW BY FREE-SPINNING WHEN WEDGELOCK IS IN RELAXED POSITION



BOTTOM VIEW

wakefield-vette
SIZE DWG. NO. REV
C 422C-DS 08/13
SCALE: NONE SHEET 2 OF 2