

Excellent Integrated System Limited

Stocking Distributor

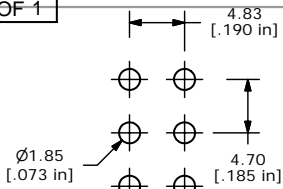
Click to view price, real time Inventory, Delivery & Lifecycle Information:

[E-Switch](#)
[100DP5T6B11M2REH](#)

For any questions, you can email us directly:

sales@integrated-circuit.com

SHEET 1 OF 1



P.C. MOUNT

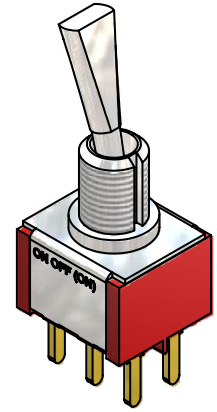
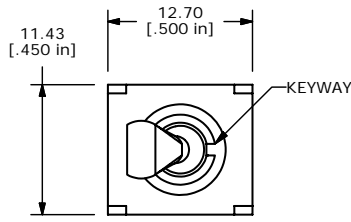
SWITCH FUNCTION		
POS. 1	POS. 2	POS. 3
ON	OFF	(ON)
2-3, 5-6	OPEN	2-1, 5-4

(ON) = MOMENTARY

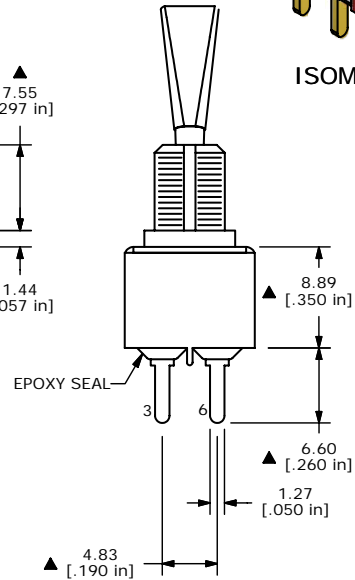
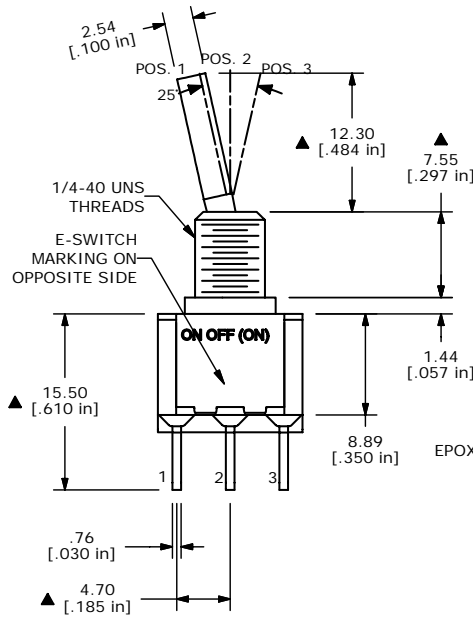


CIRCUIT: DPDT

- NOTE:
1. ALL DIMENSIONS IN MM [INCH]
 2. GENERAL TOLERANCE: X.X=±0.4
X.XX=±0.25
 3. TERMINAL NUMBERS FOR REF ONLY
 - ▲4. PLATING MATERIAL: GOLD
 5. RATING: 0.4VOLT-AMPS MAX. @20V MAX. AC OR DC
 6. ELECTRIC LIFE: 40,000 MAKE-AND-BREAK CYCLES AT FULL LOAD.
 7. INSULATION RESISTANCE: 1,000 MEGA-OHM MIN.
 8. DIELECTRIC STRENGTH: 1,000 V RMS @SEA LEVEL.
 9. OPERATING TEMP.: -30°C to 85°C
 10. ▲ DENOTES CRITICAL PARAMETER.
 11. PACKAGE: TRAY/108 PIECES PER
 12. 2002/95/EC (ROHS) COMPLIANT
 - ▲13. HARDWARE TO BE SHIPPED BULK:
 T100011 - LOCK WASHER, QTY 1
 T100015 - LOCK RING, QTY 1
 T100000 - HEX NUT, QTY 2



ISOMETRIC



TITLE 100DP5T6B11M2REH

A	17158	RELEASED FOR PRODUCTION	4/4/07	TN
REV	PCR NO	DESCRIPTION	DATE	BY

THE INFORMATION CONTAINED IN THIS DOCUMENT IS PROPRIETARY TO E-SWITCH AND IS NOT TO BE COPIED OR TRANSFERRED

SCALE	DATE	DR	DWG	REV
2:1	4/4/2007	TN	ST125014	A